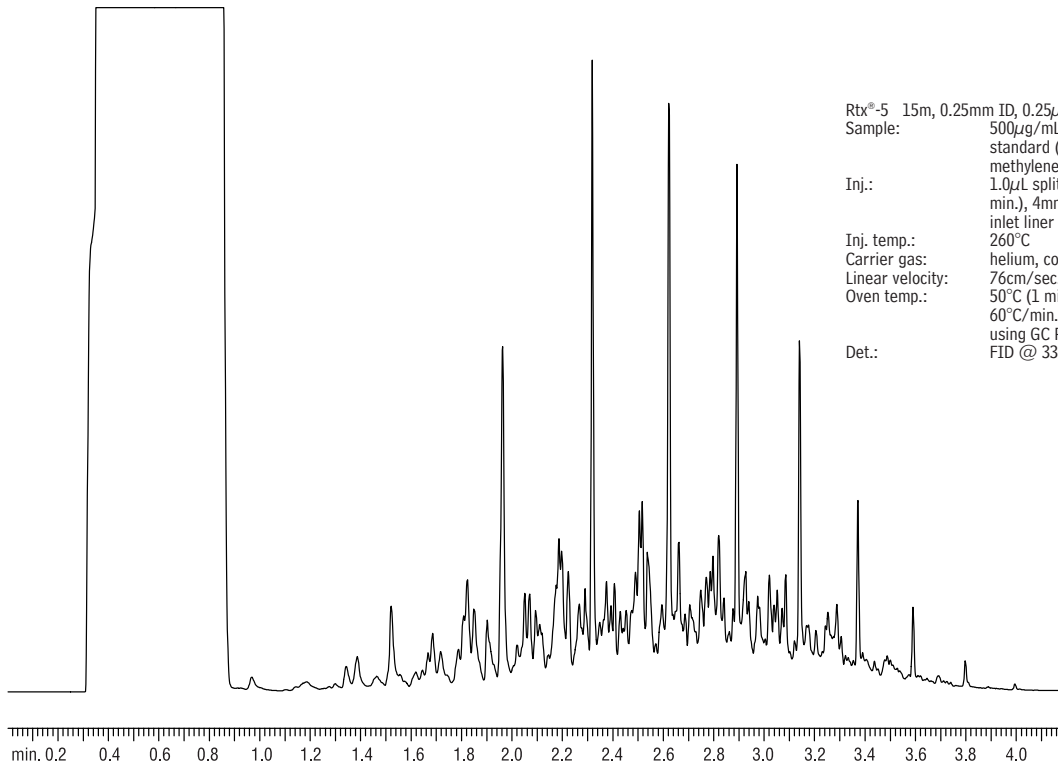


**Jet Fuel
Rtx[®]-5**



Rtx[®]-5 15m, 0.25mm ID, 0.25 μ m (cat.# 10220)
Sample: 500 μ g/mL Jet Fuel A
standard (cat.# 31215) in
methylene chloride
Inj.: 1.0 μ L splitless (hold 0.5
min.), 4mm single gooseneck
inlet liner (cat.# 22405)
Inj. temp.: 260 $^{\circ}$ C
Carrier gas: helium, constant pressure
Linear velocity: 76cm/sec. @ 50 $^{\circ}$ C
Oven temp.: 50 $^{\circ}$ C (1 min.) to 330 $^{\circ}$ C @
60 $^{\circ}$ C/min. (hold 0.5 min.)
using GC Racer
Det.: FID @ 330 $^{\circ}$ C

GC_EV00670