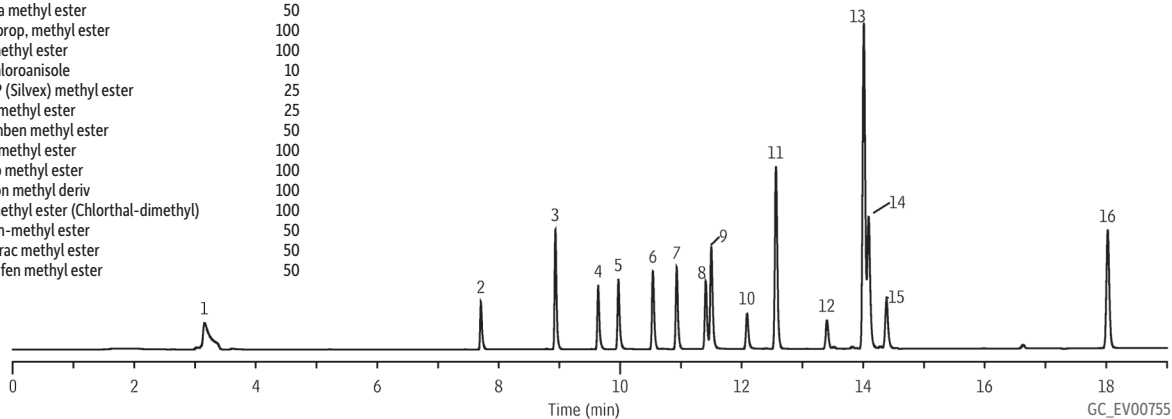


Chlorophenoxyacid Herbicides (methyl esters) US EPA Method 515 by GC/ECD on Rtx®-CLPesticides2

Peaks	Conc. (µg/mL)
1. Dalapon methyl ester	100
2. 3,5-Dichlorobenzoic Acid Methyl Ester	50
3. Dicamba methyl ester	50
4. Dichlorprop, methyl ester	100
5. 2,4-D methyl ester	100
6. Pentachloroanisole	10
7. 2,4,5-TP (Silvex) methyl ester	25
8. 2,4,5-T methyl ester	25
9. Chloramben methyl ester	50
10. 2,4-DB methyl ester	100
11. Dinoseb methyl ester	100
12. Bentazon methyl deriv	100
13. DCPA methyl ester (Chlorthal-dimethyl)	100
14. Picloram-methyl ester	50
15. Quinclorac methyl ester	50
16. Acifluorfen methyl ester	50



Column Rtx®-CLPesticides2, 30 m, 0.32 mm ID, 0.25 µm (cat.# 11324)
Sample 515.4 Methylated Chlorinated Acids Mix (cat.# 32444)
Diluent: MTBE
Conc.: 10-100µg/mL each methyl ester
Injection
Inj. Vol.: 1.0 µL splitless (hold 0.45 min)
Liner: Double Gooseneck Splitless (4mm) (cat.# 20784)
Inj. Temp.: 225 °C
Oven
Oven Temp.: 70 °C (hold 1 min) to 210 °C at 20 °C/min (hold 1 min) to 300 °C at 5 °C/min
Carrier Gas He, constant pressure (10.5 psi, 72.4 kPa)
Temp.: 70 °C
Detector ECD @ 320 °C