

Organochlorine Pesticides

US EPA Method 8081

Rtx®-CLPesticides2

Column: Rtx®-CLPesticides2 30m, 0.32mm ID, 0.50 μ m (cat.# 11325) with 5m x 0.32mm ID Siltek® treated guard tubing (cat.# 10027), connected using SeCure™ "Y" Connector Kit (cat.# 20277) with Universal "Y" Press-Tight® Connector

Sample: Organochlorine Pesticide Mix AB #2, 8-80 μ g/mL each component in hexane/toluene (cat.# 32292), Pesticide Surrogate Mix, 200 μ g/mL each component in acetone (cat.# 32000)

Inj.: 0.5 μ L splitless (hold 0.75 min.), 3.5mm Siltek® treated single gooseneck inlet liner (cat.# 20961-214.1)

Inj. temp.: 250°C

Carrier gas: hydrogen, constant pressure

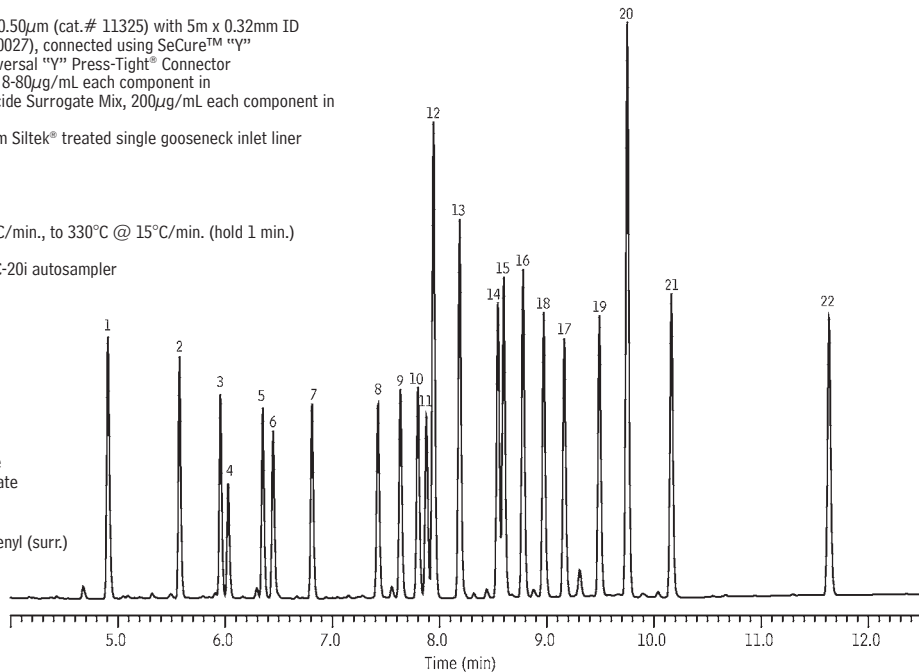
Linear velocity: 60cm/sec. @ 300°C

Oven temp.: 110°C (hold 0.5 min) to 230°C @ 25°C/min., to 330°C @ 15°C/min. (hold 1 min.)

Det.: ECD @ 330°C

Instrument: Shimadzu GC-2010 FID/ECD with AOC-20i autosampler

- | | |
|--|--------------------------------|
| 1. 2,4,5,6-tetrachloro- <i>m</i> -xylene (surr.) | 12. 4,4' -DDE |
| 2. α -BHC | 13. dieldrin |
| 3. γ -BHC | 14. endrin |
| 4. β -BHC | 15. 4,4' -DDD |
| 5. δ -BHC | 16. endosulfan II |
| 6. heptachlor | 17. 4,4' -DDT |
| 7. aldrin | 18. endrin aldehyde |
| 8. heptachlor epoxide | 19. endosulfan sulfate |
| 9. γ -chlordane | 20. methoxychlor |
| 10. α -chlordane | 21. endrin ketone |
| 11. endosulfan I | 22. decachlorobiphenyl (surr.) |



GC_EV00777