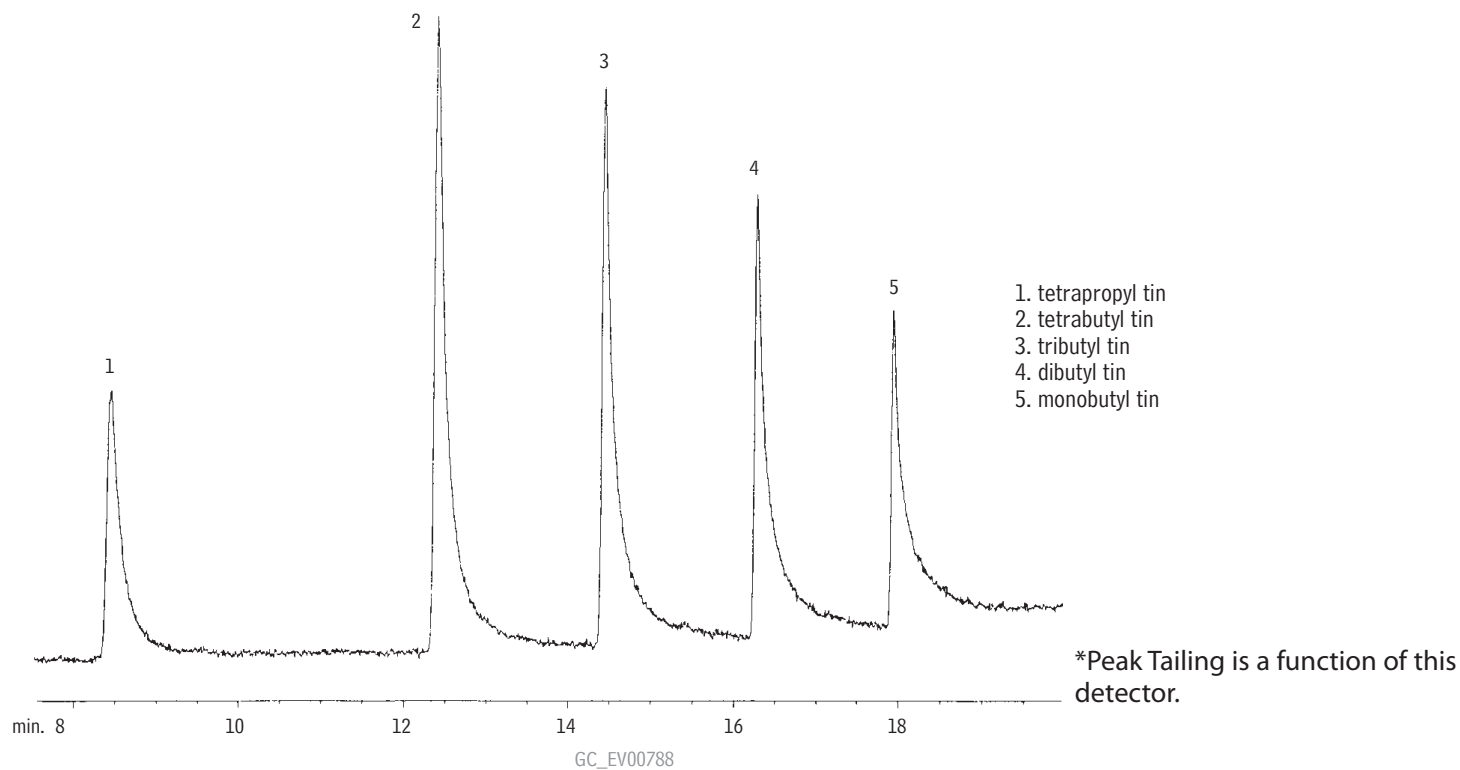


PFPD* Increases Sensitivity by 100 times When Analyzing Organo Tin Compounds By this Method.



Column: 30m, 0.32mm ID, 1.0 μ m Rtx[®]-35 (cat.# 10454). Direct injection using a Uniliner[®] inlet liner (cat.# 20335). **Concentration:** 5pg on-column. **Head pressure:** 15psi, constant. **Oven temp.:** 100°C (hold 1 min.) to 285°C @ 10°C/min. (hold 10 min.); **Detector:** PFPD Model 5380 courtesy of O.I. Analytical Corp., College Station, TX.