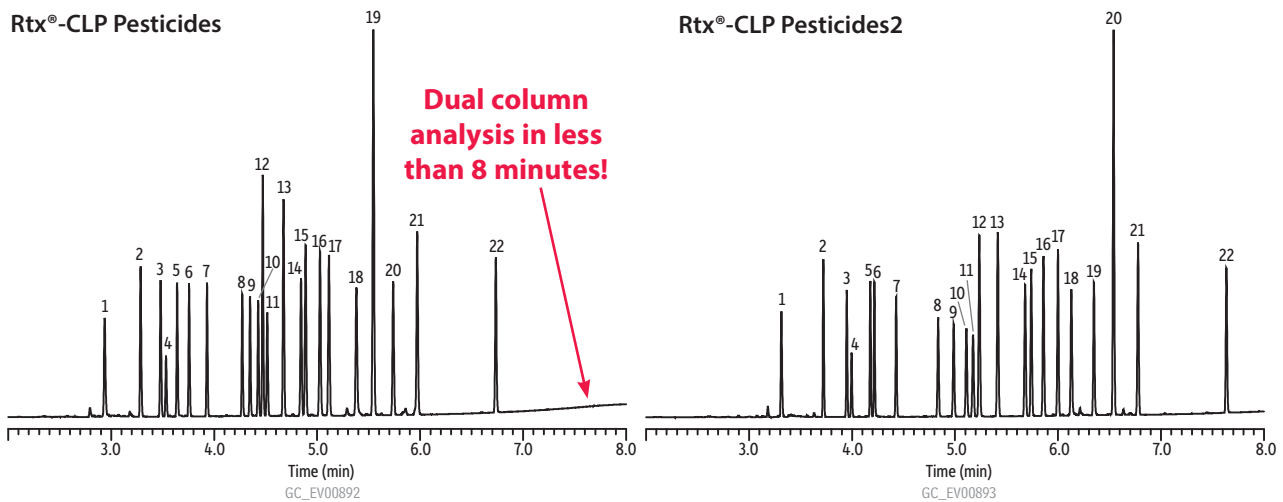


Organochlorine Pesticides on Rtx[®]-CLPesticides Columns (0.18 mm ID column set)



Columns Rtx[®]-CLPesticides 20 m, 0.18 mm ID, 0.18 µm (cat.# 42102) and Rtx[®]-CLPesticides2 20 m, 0.18 mm ID, 0.14 µm (cat.# 42302) using IP deactivated guard column 5 m, 0.53 mm ID (cat.# 10045) with SeCure[®] "Y" connector kit with universal "Y" Press-Tight[®] connector (cat.# 20276)

Sample Organochlorine pesticide mix AB #2 (cat.# 32292) Pesticide surrogate mix, EPA 8080, 8081 (cat.# 32000)

Injection
 Inj. Vol.: 0.5 µL splitless (hold 0.75 min)
 Liner: Splitless taper (2 mm) (cat.# 20796)
 Inj. Temp.: 250 °C

Oven
 Oven Temp.: 140 °C (hold 1 min) to 250 °C at 35 °C/min (hold 1 min) to 330 °C at 35 °C/min (hold 3 min)

Carrier Gas
 He, constant linear velocity

Linear Velocity: 20 cm/sec @ 140 °C

Detector
 Micro-ECD @ 350 °C

Instrument
 Agilent/HP6890 GC

Notes
 cat.# 32292 = 8-80 µg/mL each component in hexane/toluene
 cat.# 32000 = 200 µg/mL each component in acetone

This chromatogram was obtained using an Agilent Micro-ECD. To obtain comparable results, you will need to employ a Micro-ECD in addition to confirmational dual columns connected to a 5-meter guard column using a "Y" Press-Tight[®] connector.

Peaks		Peaks	
1. 2,4,5,6-Tetrachloro- <i>m</i> -xylene (SS)	12. 4,4'-DDE	13. Dieldrin	14. Endrin
2. α-BHC	15. 4,4'-DDD	16. Endosulfan II	17. 4,4'-DDT
3. γ-BHC	18. Endrin aldehyde	19. Endosulfan sulfate	20. Methoxychlor
4. β-BHC	21. Endrin ketone	22. Decachlorobiphenyl (SS)	
5. δ-BHC			
6. Heptachlor			
7. Aldrin			
8. Heptachlor epoxide			
9. <i>trans</i> -Chlordane*			
10. <i>cis</i> -Chlordane*			
11. Endosulfan I			

* For information regarding the nomenclature used for *cis*-chlordane and *trans*-chlordane, visit www.restek.com/chlordane-notice