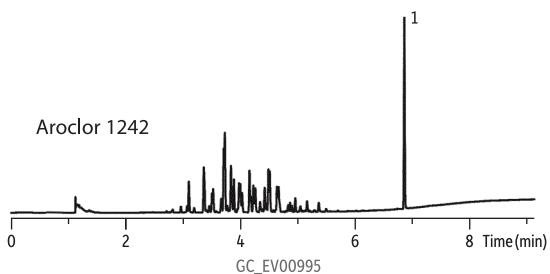
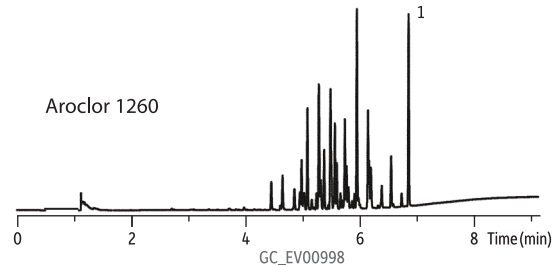
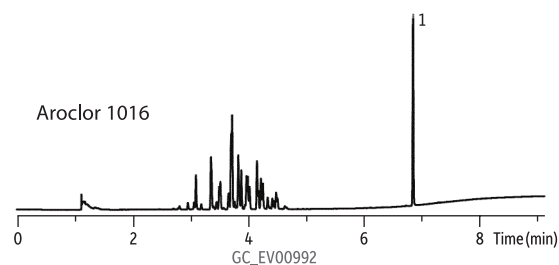
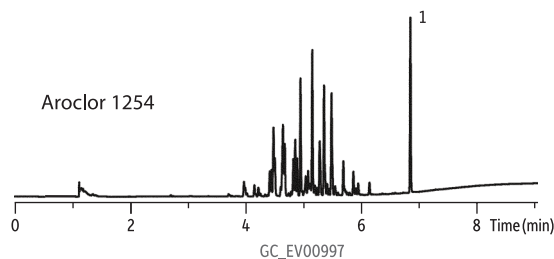
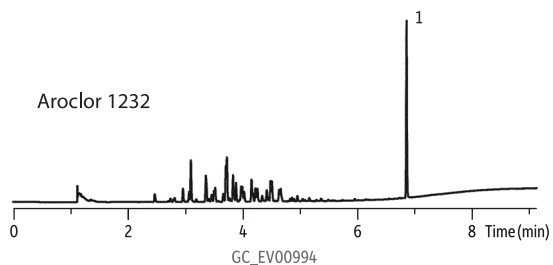
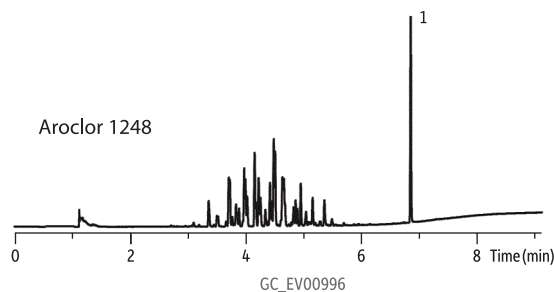
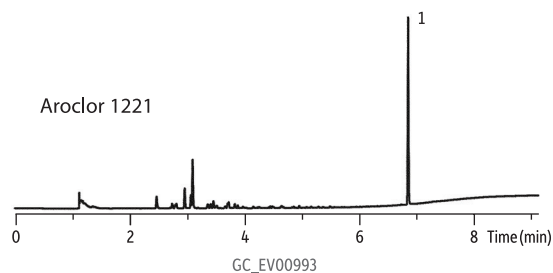


# Aroclor PCBs on Rtx-CLPesticides

## Peaks

1. Decachlorobiphenyl (DCB)



**Column** Rtx-CLPesticides, 30 m, 0.32 mm ID, 0.32  $\mu$ m (cat.# 11141)  
**Sample** PCB kit #1 diluted to 1,000 ppb in hexane (cat.# 32089)  
 Decachlorobiphenyl (BZ #209) diluted to 100 ppb in acetone (cat.# 32029)

**Injection**  
 Inj. Vol.: 1.0  $\mu$ L pulsed splitless (hold 0.3 min)  
 Liner: Cyclo double taper (4 mm) (cat.# 20895)  
 Inj. Temp.: 250  $^{\circ}$ C  
 Pulse Pressure: 30 psi (206.8 kPa)  
**Oven**  
 Oven Temp.: 120  $^{\circ}$ C to 200  $^{\circ}$ C at 45  $^{\circ}$ C/min to 230  $^{\circ}$ C at 15  $^{\circ}$ C/min to 330  $^{\circ}$ C at 30  $^{\circ}$ C/min (hold 2 min)

**Carrier Gas** He, constant flow  
 Linear Velocity: 60 cm/sec

**Detector**  $\mu$ -ECD @ 330  $^{\circ}$ C

**Notes** This chromatogram was obtained using an Agilent  $\mu$ -ECD. To obtain comparable results, you will need to employ a  $\mu$ -ECD in addition to confirmational dual columns connected to a 5-meter guard column using a "Y" Press-Tight connector.