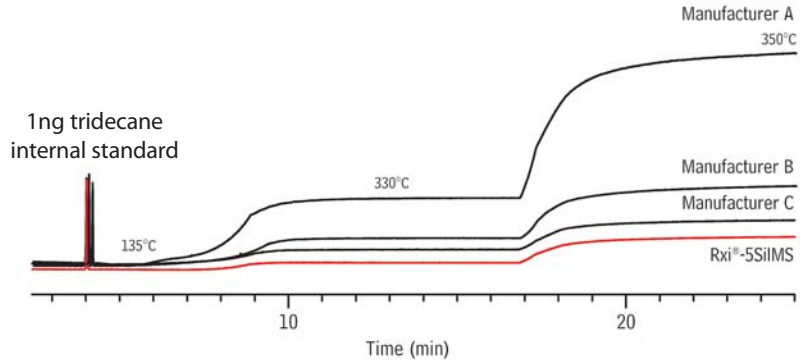


## Rxi®-5Siil MS Competitor Bleed Comparison



Columns: 30m, 0.25mm ID, 0.25 $\mu$ m  
Sample: 40 $\mu$ g/mL n-tridecane in methylene chloride  
Inj.: 1.0 $\mu$ L split (split ratio 40:1), 4mm single gooseneck splitless liner w/wool (cat.# 22406)  
Inj. temp.: 250°C  
Carrier gas: helium, constant flow,  
Flow rate: 1.4 mL/min.  
Oven temp.: 135°C (hold 4 min.) to 330°C (hold 10 min.) @ 70°C/min. to 350°C (hold 10 min.) @ 70°C/min.  
Det.: FID @ 330°C