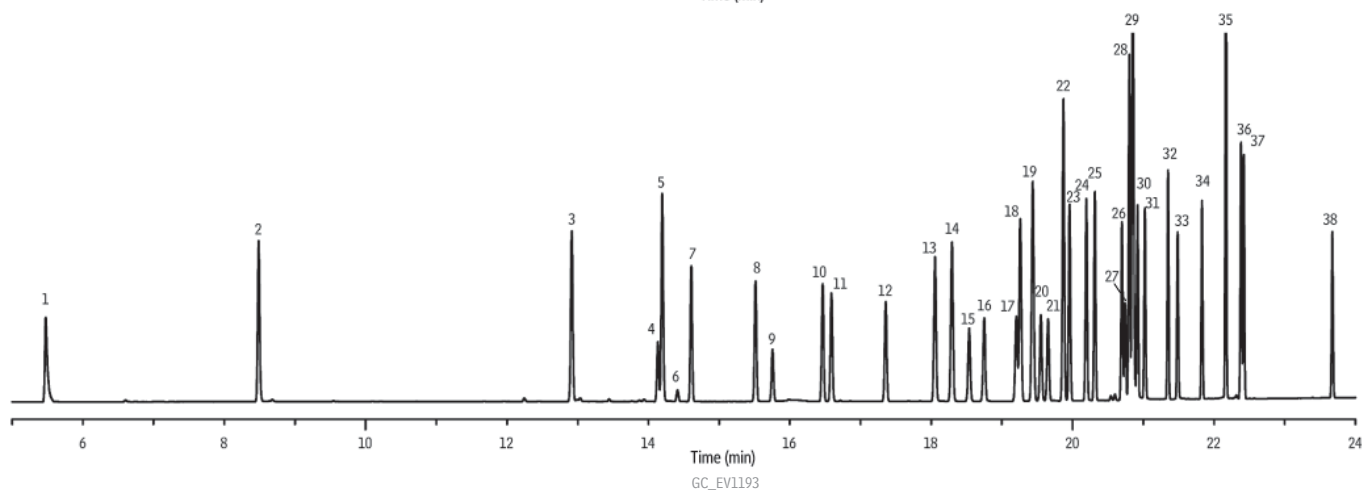
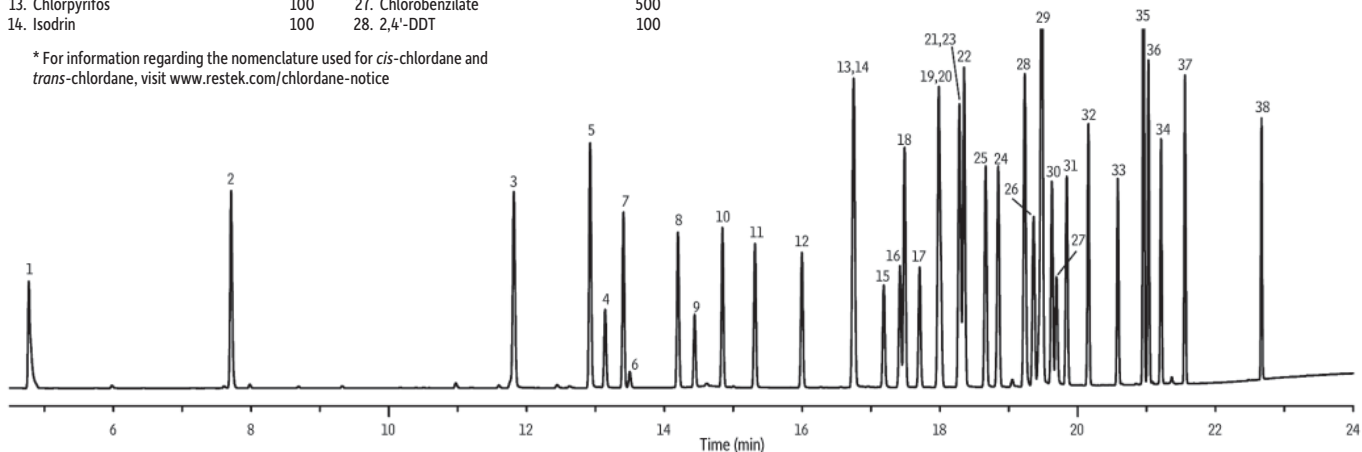


Organochlorine Pesticides by EPA Method 8081B on Rtx®-CLPesticides/Rtx®-CLPesticides2 (extended list)

Peaks	Conc. (ng/mL)	Peaks	Conc. (ng/mL)	Peaks	Conc. (ng/mL)
1. 1,2-Dibromo-3-Chloropropane	100	15. Oxychlorane	50	29. <i>cis</i> -Nonachlor	100
2. Hexachlorocyclopentadiene	100	16. Heptachlor epoxide	40	30. 4,4'-DDD	80
3. Tetrachloro- <i>m</i> -xylene (SS)	100	17. <i>trans</i> -Chlordane*	40	31. Endosulfan II	80
4. <i>cis</i> -Diallate	500	18. 2,4'-DDE	100	32. 4,4'-DDT	80
5. Hexachlorobenzene	100	19. <i>trans</i> -Nonachlor	100	33. Endrin aldehyde	80
6. <i>trans</i> -Diallate	500	20. <i>cis</i> -Chlordane*	40	34. Endosulfan sulfate	80
7. α -BHC	40	21. Endosulfan I	40	35. Methoxychlor	400
8. γ -BHC	40	22. Captan	100	36. Mirex	100
9. β -BHC	40	23. 4,4'-DDE	100	37. Endrin ketone	80
10. δ -BHC	40	24. Dieldrin	80	38. Decachlorobiphenyl	100
11. Heptachlor	40	25. 2,4'-DDD	100		
12. Aldrin	40	26. Endrin	80		
13. Chlorpyrifos	100	27. Chlorobenzilate	500		
14. Isodrin	100	28. 2,4'-DDT	100		

* For information regarding the nomenclature used for *cis*-chlordane and *trans*-chlordane, visit www.restek.com/chlordane-notice



GC_EV1193

Columns Rtx®-CLPesticides2 30 m, 0.32 mm ID, 0.25 μ m (cat.# 11324) and Rtx®-CLPesticides 30 m, 0.32 mm ID, 0.32 μ m (cat.# 11141) using Rxi® guard column 5 m, 0.32 mm ID (cat.# 10039) with deactivated universal "Y" Press-Tight® connector (cat.# 20405-261)

Sample Organochlorine pesticide mix AB #2 (cat.# 32292)
Organochlorine pesticide mix C #1 (cat.# 32296)
2,4,5,6-Tetrachloro-*m*-xylene (cat.# 32027)
Decachlorobiphenyl (BZ #209) (cat.# 32029)
Chlorpyrifos (cat.# 32212)
2,4'-DDE (cat.# 32099)
2,4'-DDD (cat.# 32098)
Chlorobenzilate (cat.# 32211)
Captan (cat.# custom)
cis-Nonachlor (cat.# custom)
Mirex (cat.# custom)
Oxychlorane (cat.# custom)
Diallate (cat.# custom)

Diluent: Hexane

Injection
Inj. Vol.: 1 μ L splitless (hold 0.3 min)
Liner: Cyclo double taper (4 mm) (cat.# 20896)
Inj. Temp.: 250 °C

Oven
Oven Temp.: 80 °C to 175 °C at 8 °C/min to 195 °C at 11 °C/min to 235 °C at 7 °C/min to 320 °C at 25 °C/min (hold 3 min)

Carrier Gas
Linear Velocity: He, constant flow
28 cm/sec
Detector: Micro-ECD @ 330 °C

Make-up Gas
Flow Rate: 60 mL/min
Make-up Gas Type: N₂

Instrument
Agilent/HP6890 GC

Notes
This chromatogram was obtained using an Agilent® micro-ECD. To obtain comparable results, you will need to employ a micro-ECD in addition to confirmational dual columns connected to a 5-meter guard column using a "Y" Press-Tight® connector.