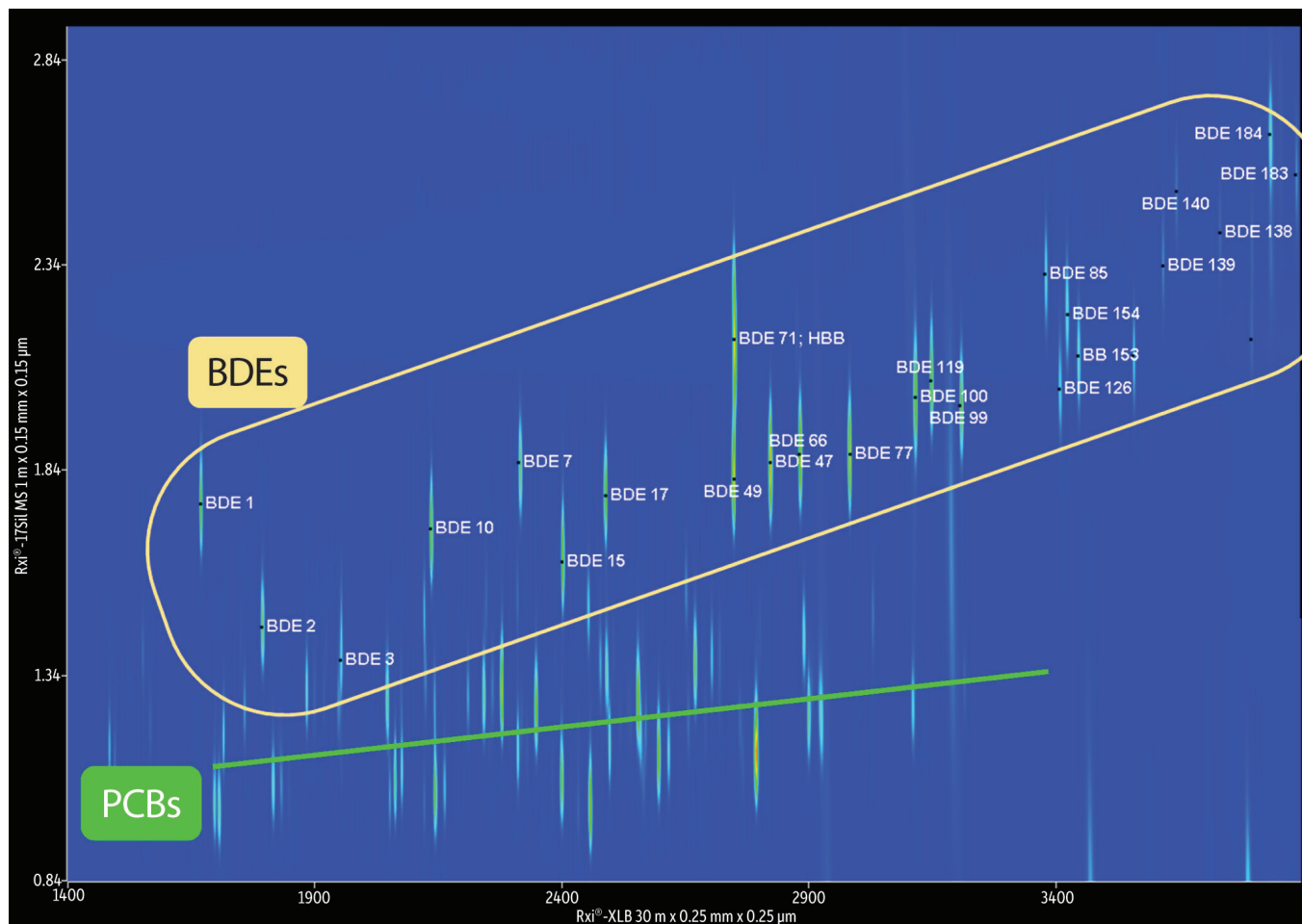


## Aroclors and BFRs on Rxi®-XLB and Rxi®-17Sil MS (GCxGC)



GC\_EV1238

<b>Column</b>	Rxi®-XLB 30 m, 0.25 mm ID, 0.25 µm (cat.# 13723) Rxi®-17Sil MS 1 m, 0.15 mm ID, 0.15 µm (cat.# 43820) with IP Deactivated Guard Column 0.2 m, 0.15 mm ID	<b>Modulation</b>	
<b>Sample</b>	Wellington BFR-PAR Mix Aroclor	<b>Modulator</b>	
<b>Diluent:</b>	isooctane	<b>Temp. Offset:</b>	20 °C
<b>Injection</b>		<b>Second Dimension</b>	
<b>Inj. Vol.:</b>	1.0 µL splitless (hold 1.0 min.)	<b>Separation Time:</b>	3.5 sec.
<b>Liner:</b>	Premium 4mm Single Taper Gooseneck w/Wool (cat.# 23303.5)	<b>Hot Pulse Time:</b>	1.25 sec.
<b>Inj. Temp.:</b>	250 °C	<b>Cool Time</b>	
<b>Purge Flow:</b>	20 mL/min.	<b>between Stages:</b>	0.50 sec.
<b>Oven</b>		<b>Detector</b>	µ-ECD @ 325 °C
<b>Oven Temp:</b>	Rxi®-XLB: 80 °C (hold 1 min.) to 120 °C at 10 °C/min. to 300 °C at 3 °C/min. Rxi®-17Sil MS: 85 °C (hold 1 min.) to 125 °C at 10 °C/min. to 305 °C at 3 °C/min.	<b>Data Rate:</b>	50 Hz
<b>Carrier Gas</b>	He, corrected constant flow (2.0 mL/min.)	<b>Instrument</b>	Agilent/HP6890 GC
		<b>Notes</b>	The Rxi®-17Sil MS column (cat.# 43820) is a 10 m column. A 1 m section was used as a second dimension column. Guard column was connected using a Siltek® treated universal Press-Tight® connector (cat.# 20480).