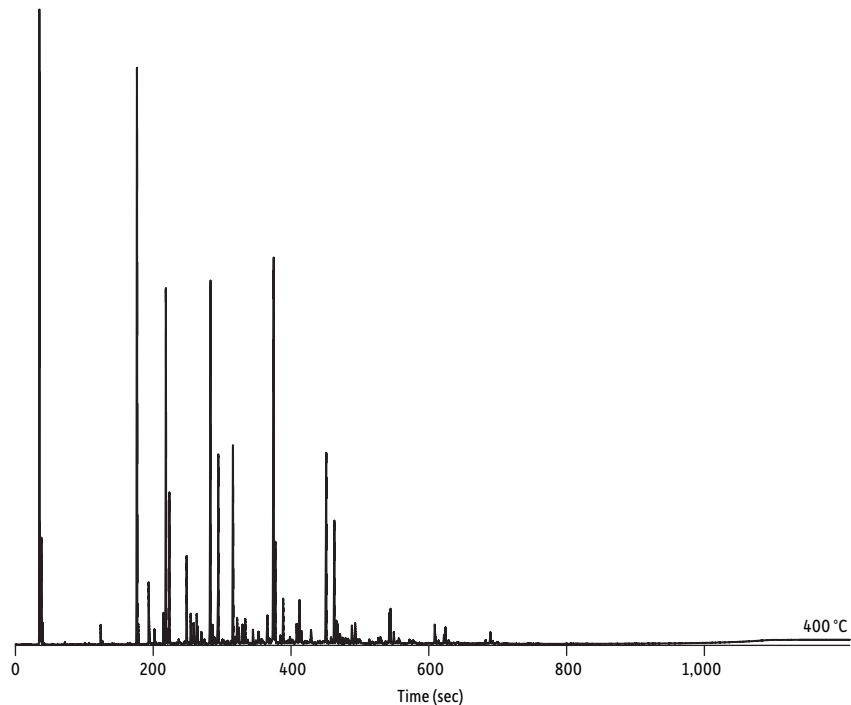


## Creosote Oil Standard on Rxi®-1HT (15 m x 0.25 mm x 0.10 µm)



GC\_EV1367

<b>Column</b>	Rxi®-1HT, 15 m, 0.25 mm ID, 0.10 µm (cat.# 13950)
<b>Sample</b>	Creosote oil standard (cat.# 31838)
<b>Diluent:</b>	Methylene chloride
<b>Conc.:</b>	50,000 ng/µL
<b>Injection</b>	
<b>Inj. Vol.:</b>	1 µL split (split ratio 250:1)
<b>Liner:</b>	Premium 4 mm Precision liner w/wool (cat.# 23305.5)
<b>Inj. Temp.:</b>	275 °C
<b>Split Vent</b>	
<b>Flow Rate:</b>	437.5 mL/min
<b>Oven</b>	
<b>Oven Temp.:</b>	40 °C (hold 0.1 min) to 400 °C at 20 °C/min (hold 1.9 min)
<b>Carrier Gas</b>	H <sub>2</sub> , constant flow
<b>Flow Rate:</b>	1.75 mL/min
<b>Detector</b>	FID @ 420 °C
<b>Constant Column +</b>	
<b>Constant Make-up:</b>	50 mL/min
<b>Make-up Gas Type:</b>	N <sub>2</sub>
<b>Hydrogen flow:</b>	40 mL/min
<b>Air flow:</b>	450 mL/min
<b>Data Rate:</b>	20 Hz
<b>Instrument</b>	Agilent/HP6890 GC
<b>Notes</b>	Actual column length was calculated to be 15.7 m using holdup time and EZGC® flow calculator ( <a href="http://www.restek.com/ezgc-mtfc">http://www.restek.com/ezgc-mtfc</a> ).