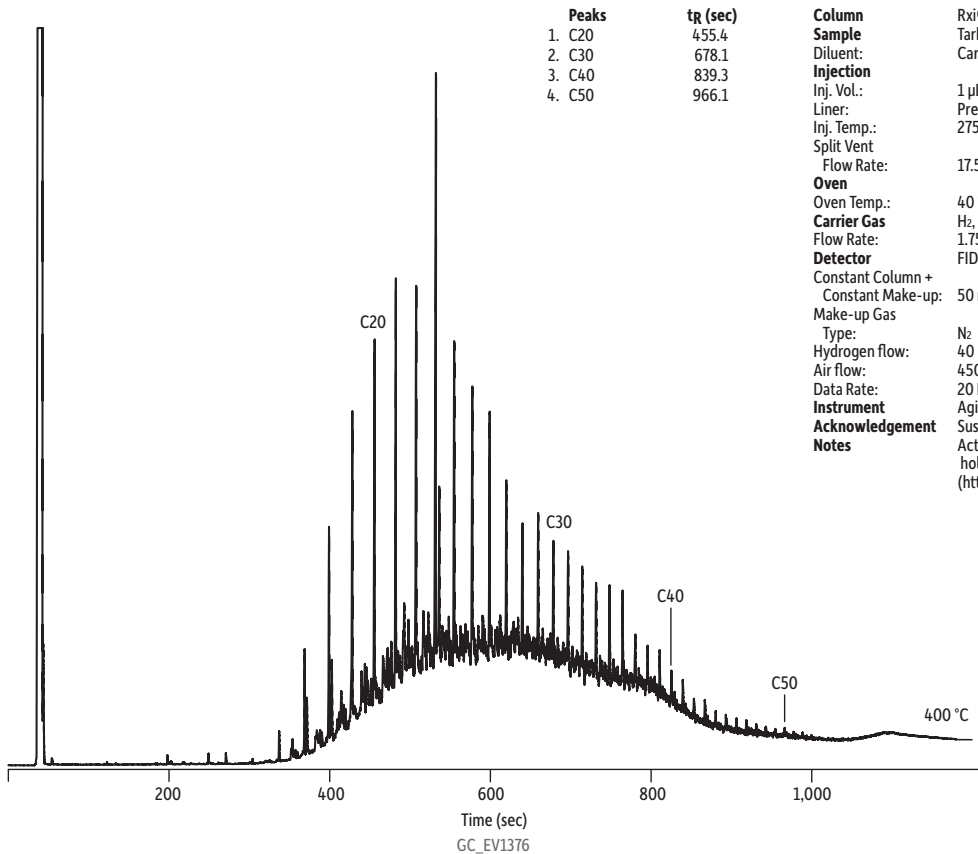


# Florida Beach Tarball 5 on Rxi®-1HT (15 m x 0.25 mm x 0.10 µm)



**Column** Rxi®-1HT, 15 m, 0.25 mm ID, 0.10 µm (cat.# 13950)  
**Sample** Tarball 5 - Florida Gulf beach  
**Diluent:** Carbon disulfide  
**Injection**  
Inj. Vol.: 1 µL split (split ratio 10:1)  
Liner: Premium 4 mm Precision liner w/wool (cat.# 23305.5)  
Inj. Temp.: 275 °C  
Split Vent  
Flow Rate: 17.5 mL/min  
**Oven**  
Oven Temp.: 40 °C (hold 0.1 min) to 400 °C at 20 °C/min (hold 1.9 min)  
**Carrier Gas** H<sub>2</sub>, constant flow  
Flow Rate: 1.75 mL/min  
**Detector** FID @ 420 °C  
Constant Column +  
Constant Make-up: 50 mL/min  
Make-up Gas  
Type: N<sub>2</sub>  
Hydrogen flow: 40 mL/min  
Air flow: 450 mL/min  
Data Rate: 20 Hz  
**Instrument** Agilent/HP6890 GC  
**Acknowledgement** Susan Forsyth - Walton County, FL - Tarball samples  
**Notes** Actual column length was calculated to be 15.7 m using holdup time and EZGC® flow calculator (<http://www.restek.com/ezgc-mtfc>).