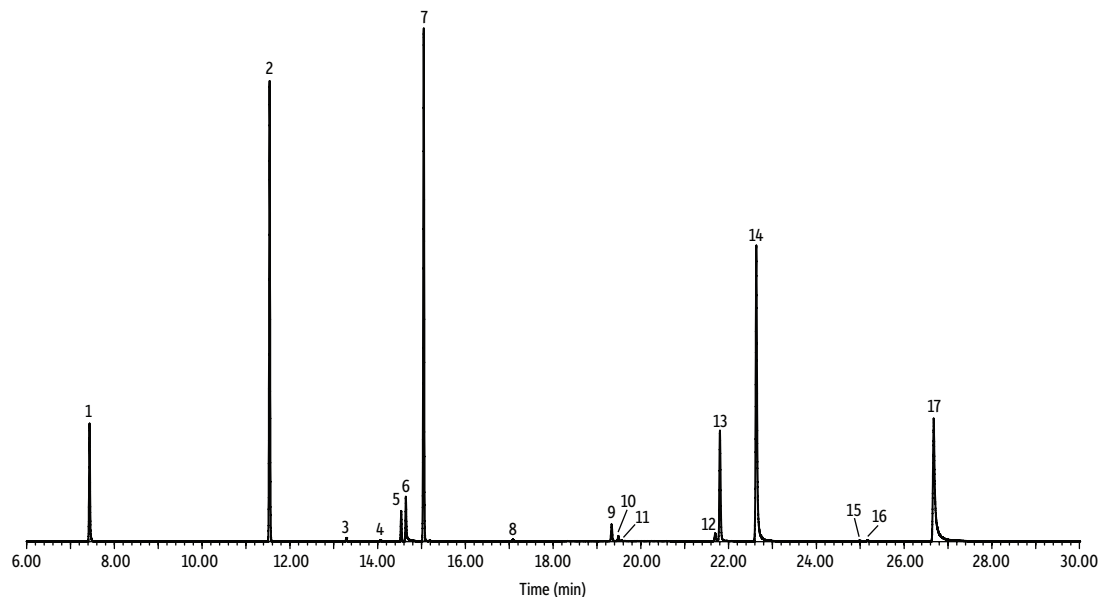


EPA Method 525.3 UCMR4 Standard on Rxi-5Sil MS at Method Reporting Limit (SIM Analysis)



GC_EV1462

| Peaks | t_R (min) | Conc. ($\mu\text{g/mL}$) |
|---|-------------|----------------------------|
| 1. 1,3-Dimethyl-2-nitrobenzene (SS) | 7.43 | 1.0 |
| 2. Acenaphthene-d10 (IS) | 11.54 | 1.0 |
| 3. Ethoprop | 13.29 | 0.030 |
| 4. α -Hexachlorocyclohexane (α -HCH) | 14.06 | 0.010 |
| 5. Dimethipin | 14.54 | 0.20 |
| 6. Pentachlorophenol- $^{13}\text{C}_6$ (IS) | 14.65 | 2.0 |
| 7. Phenanthrene-d10 (IS) | 15.05 | 1.0 |
| 8. Chlorpyrifos | 17.09 | 0.030 |
| 9. Profenofos | 19.34 | 0.30 |
| 10. Tribufos | 19.49 | 0.070 |
| 11. Oxyfluorfen | 19.57 | 0.050 |
| 12. Tebuconazole | 21.70 | 0.20 |
| 13. Triphenyl phosphate (SS) | 21.80 | 1.0 |
| 14. Chrysene-d12 (IS) | 22.63 | 1.0 |
| 15. <i>cis</i> -Permethrin | 24.98 | 0.017 |
| 16. <i>trans</i> -Permethrin | 25.16 | 0.023 |
| 17. Benzo[a]pyrene-d12 (SS) | 26.68 | 1.0 |

Column Rxi-5Sil MS, 30 m, 0.25 mm ID, 0.25 μm (cat.# 13623)
Sample EPA Method 525.3 PAH IS mix (cat.# 32547), Pentachlorophenol- $^{13}\text{C}_6$ (cat.# 32548), EPA Method 525.3 surrogate standard (cat.# 32549), Method 525.3 UCMR4 standard (cat.# 572261)
 Ethyl acetate

Diluent:
Injection
 Inj. Vol.: 1 μL pulsed splitless (hold 1.0 min)
 Liner: Topaz 4 mm single taper w/wool (cat.# 23303)
 Inj. Temp.: 275 $^{\circ}\text{C}$
 Pulse Pressure: 30 psi (206.8kPa)
 Pulse Time: 1.05 min
 Purge Flow: 60 mL/min

Oven
 Oven Temp.: 70 $^{\circ}\text{C}$ (hold 1.5 min) to 200 $^{\circ}\text{C}$ at 10 $^{\circ}\text{C}/\text{min}$ to 320 $^{\circ}\text{C}$ at 7 $^{\circ}\text{C}/\text{min}$ (hold 3 min)

Carrier Gas
 He, constant flow

Flow Rate: 1.2 mL/min

Detector MS

Mode: SIM

| SIM Program: | Group | Start Time (min) | Ion(s) (m/z) | Dwell (ms) |
|--------------|-------|------------------|--|------------|
| | 1 | 1.546 | 77, 134 | 25 |
| | 2 | 9.501 | 162, 164 | 25 |
| | 3 | 12.423 | 97, 126, 139, 158 | 25 |
| | 4 | 13.666 | 109, 181, 183, 219 | 25 |
| | 5 | 14.288 | 53, 54, 274, 276 | 25 |
| | 6 | 14.856 | 160, 188 | 25 |
| | 7 | 16.087 | 97, 197, 199 | 25 |
| | 8 | 18.205 | 57, 63, 97, 139, 169, 208, 252, 339, 361 | 25 |
| | 9 | 20.652 | 77, 83, 125, 169, 250, 326 | 25 |
| | 10 | 22.212 | 236, 240 | 25 |
| | 11 | 23.813 | 163, 183 | 25 |
| | 12 | 25.886 | 132, 164 | 25 |

Transfer Line

Temp.: 280 $^{\circ}\text{C}$

Analyzer Type: Quadrupole

Source Type: Stainless Steel

Drawout Plate: 6 mm ID

Source Temp.: 280 $^{\circ}\text{C}$

Quad Temp.: 180 $^{\circ}\text{C}$

Solvent Delay

Time: 1.45 min

Tune Type: DFTPP

Ionization Mode: EI

Instrument HP6890 GC & 5973 MSD

Notes The EPA Method 525.3 UCMR4 standard analyte concentrations vary to simplify preparing ICAL levels based on the minimum method reporting levels.