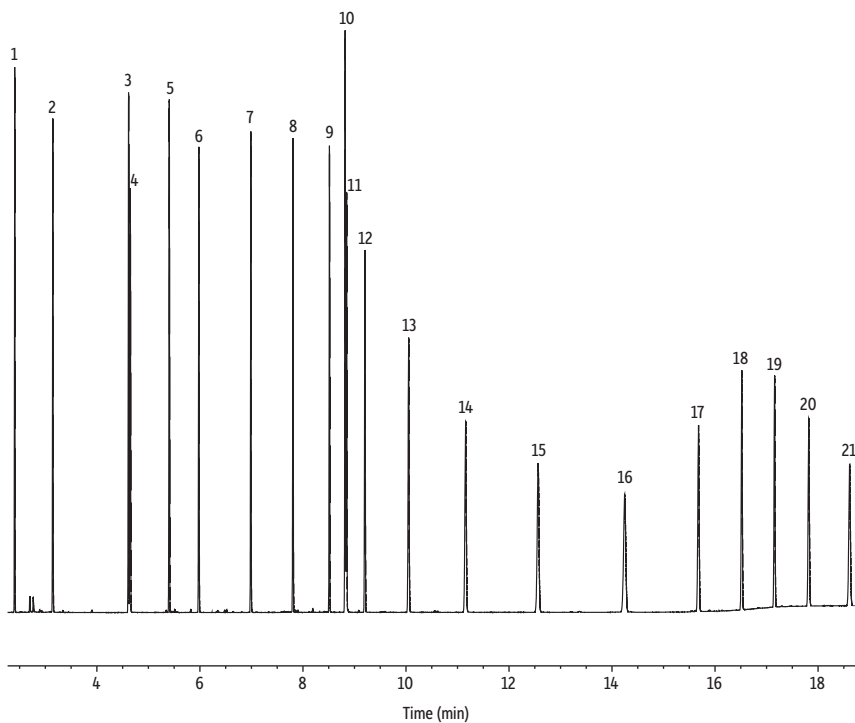


NJ DEP EPH Aliphatics on Rxi-5Sil MS by Split Injection

- Fast analysis time.
- Split injection.



GC_EV1490

Column Rxi-5Sil MS, 30 m, 0.25 mm ID, 0.25 μ m (cat.# 13623)
Sample NJ DEP EPH 10/08 rev. 2 aliphatics calibration standard (cat.# 30540)
 1-Chlorooctadecane (cat.# 31098)
 Diluent: Hexane
Injection
 Inj. Vol.: 1 μ L split (split ratio 10:1)
 Liner: Topaz 4 mm ID Precision liner w/ wool (cat.# 23305)
 Inj. Temp.: 300 °C
Oven
 Oven Temp.: 55 °C (hold 0.5 min) to 150 °C at 20 °C/min to 250 °C at 30 °C/min to 280 °C at 5 °C/min to 345 °C at 30 °C/min (hold 3 min)
Carrier Gas
 Flow Rate: He, constant flow
Detector
 Make-up Gas: 45 mL/min
 Flow Rate: N₂
 Make-up Gas: 40 mL/min
 Type: N₂
 Hydrogen flow: 450 mL/min
 Air flow: 50 Hz
 Data Rate: 50 Hz
 Instrument: Agilent 7890A GC

Peaks	tr (min)	Conc. (μ g/mL)
1. <i>n</i> -Nonane	2.40	125
2. <i>n</i> -Decane	3.14	125
3. Naphthalene	4.61	125
4. <i>n</i> -Dodecane	4.64	125
5. 2-Methylnaphthalene	5.40	125
6. <i>n</i> -Tetradecane	5.97	125
7. <i>n</i> -Hexadecane	6.98	125
8. <i>n</i> -Octadecane	7.80	125
9. <i>n</i> -Eicosane	8.51	125
10. 1-Chlorooctadecane (SS)	8.81	200
11. <i>n</i> -Heneicosane	8.84	125
12. <i>n</i> -Docosane	9.20	125
13. <i>n</i> -Tetracosane	10.05	125
14. <i>n</i> -Hexacosane	11.15	125
15. <i>n</i> -Octacosane	12.56	125
16. <i>n</i> -Tricontane	14.24	125
17. <i>n</i> -Dotriacontane	15.67	125
18. <i>n</i> -Tetraatriacontane	16.51	125
19. <i>n</i> -Hexatriacontane	17.15	125
20. <i>n</i> -Octatriacontane	17.81	125
21. <i>n</i> -Tetracontane	18.61	125