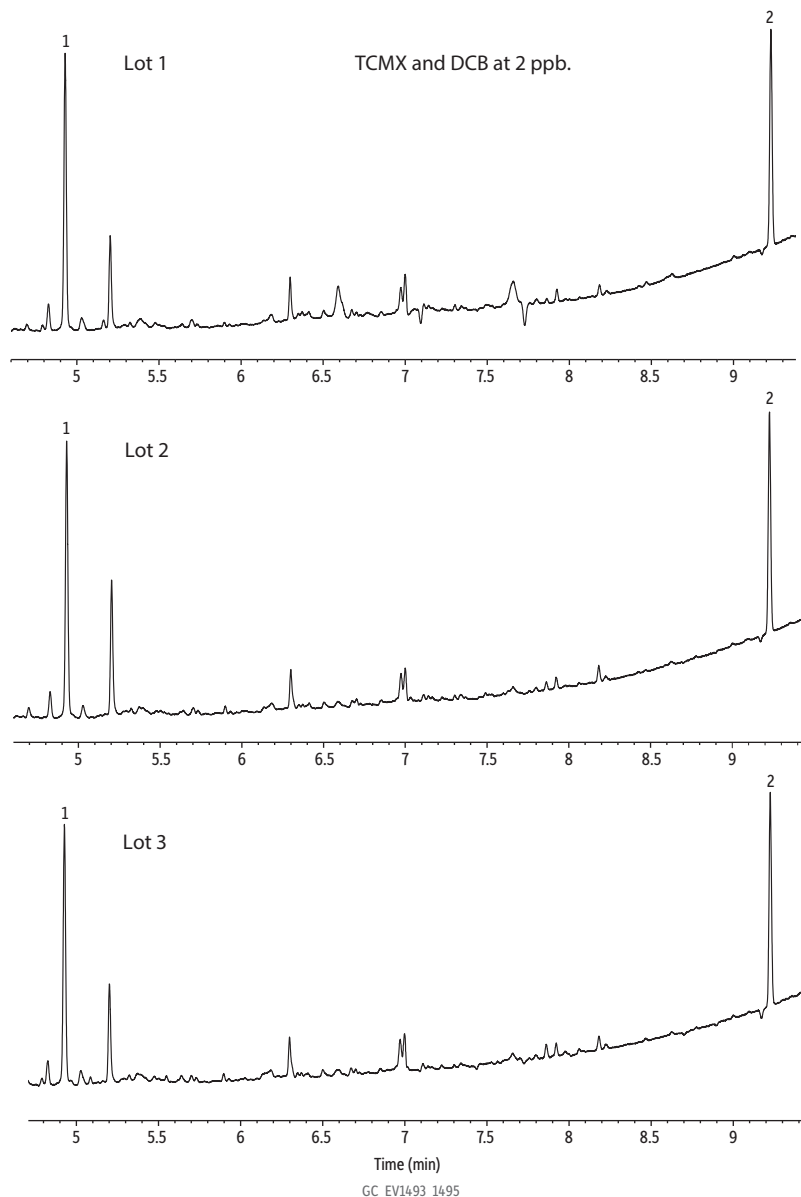


## Resprep CarboPrep Plus SPE Cartridge (Lot Comparisons)



### Peaks

1. 2,4,5,6-Tetrachloro-*m*-xylene (TCMX)
2. Decachlorobiphenyl (DCB)

**Column** Rtx-CLPesticides, 30 m, 0.32 mm ID, 0.32  $\mu$ m (cat.# 11141)

**Sample** 2,4,5,6-Tetrachloro-*m*-xylene (cat.# 32027)

Decachlorobiphenyl (BZ #209) (cat.# 32029)

**Diluent:** Hexane

**Conc:** 2 ppb

### Injection

**Inj. Vol.:** 4  $\mu$ L splitless (hold 0.75 min)

**Liner:** Topaz 4.0 mm ID single taper inlet liner w/wool (cat.# 23303)

**Inj. Temp.:** 250 °C

**Purge Flow:** 50 mL/min

### Oven

**Oven Temp.:** 90 °C (hold 0.5 min) to 330 °C at 25 °C/min (hold 2 min)

**Carrier Gas** He, constant flow

**Flow Rate:** 3.5 mL/min

**Detector** Micro-ECD @ 340 °C

**Make-up Gas**

**Flow Rate:** 50 mL/min

**Make-up**

**Gas Type:** N<sub>2</sub>

**Data Rate:** 50 Hz

**Instrument** Agilent/HP6890 GC

### Notes

Conditioned a Resprep CarboPrep Plus SPE cartridge (cat.# 25845) by adding one cartridge volume of hexane:acetone (90:10) and letting it stand for five minutes before drawing the solvent down to frit level. Then, 1 mL of sample extract was loaded onto the cartridge and eluted with 9 mL of hexane:acetone (90:10).