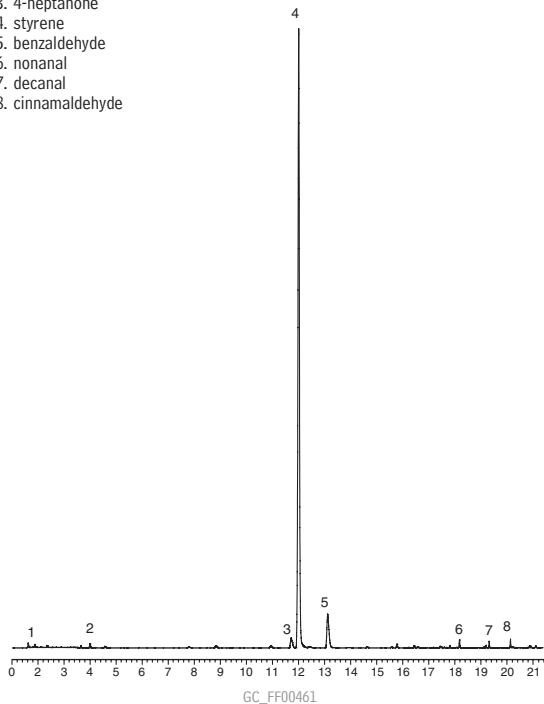


# Food Packaging Volatiles by Purge & Trap GCMS

## Rtx<sup>®</sup>-5MS

1. tetrahydrofuran
2. ethylbenzene
3. 4-heptanone
4. styrene
5. benzaldehyde
6. nonanal
7. decanal
8. cinnamaldehyde



30m, 0.25mm ID, 1 $\mu$ m Rtx<sup>®</sup>-5MS (cat.# 12653)  
GC: Agilent 6890  
Oven temp.: 50°C to 92°C at 3°C/min., to 220°C at 20°C/min. (hold 1 min.)  
Injector temp.: 250°C  
Carrier gas: helium  
Linear velocity: 36 cm/sec. (1 mL/min.)  
Detector sensitivity: NA  
Split ratio: 20:1  
Detector : MSD (Agilent 5973)  
Detector temp.: 280°C  
Scan range: 35-260 AMU  
Ionization: EI @ 70 eV  
Mode:

Sample Conditions:  
Sample: Overwrap, lid of bowl  
Concentrator: Tekmar LSC-3100 purge & trap  
Trap: Vocabarb 3000, type K  
Purge: 10 min. @ 40 mL/min., at 60°C  
Dry purge: 3 min. @ 40 mL/min.  
Desorb preheat: 220°C  
Desorb: 245°C, 2 min., 40 mL/min.  
Bake: 230°C, 6 min.  
Interface: 1:20 split at injection port with 1mm ID inlet liner  
Transfer line: 0.53mm ID Silcosteel<sup>®</sup> MXT<sup>®</sup> tubing, cat#20591