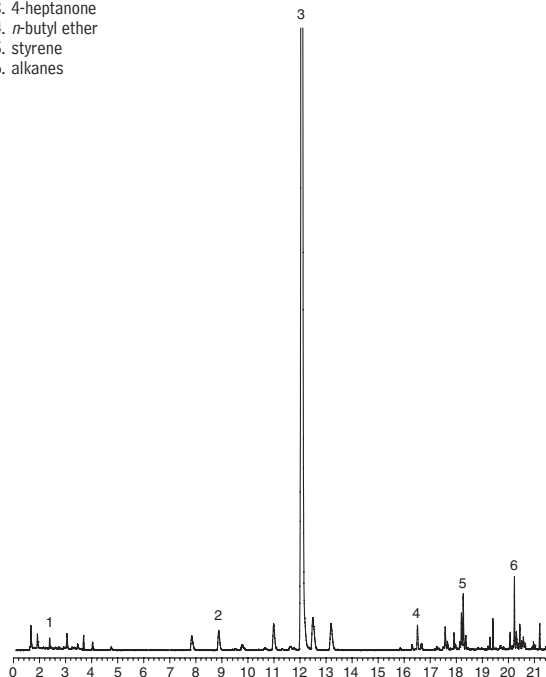


Food Packaging Volatiles by Purge & Trap GCMS

Rtx®-5MS

1. ethyl acetate
2. toluene
3. 4-heptanone
4. *n*-butyl ether
5. styrene
6. alkanes



GC_FF00462

30m, 0.25mm ID, 1 μ m Rtx®-5MS (cat.# 12653)
GC: Agilent 6890
Oven temp.: 50°C to 92°C at 3°C/min., to 220°C at 20°C/min. (hold 1 min.)
Injector temp.: 250°C
Carrier gas: helium
Linear velocity: 36 cm/sec. (1 mL/min.)
Detector sensitivity: NA
Split ratio: 20:1
Detector : MSD (Agilent 5973)
Detector temp.: 280°C
Scan range: 35-260 AMU
Ionization: EI @ 70 eV
Mode:

Sample Conditions:
Sample: Overwrap, inner bowl
Concentrator: Tekmar LSC-3100 purge & trap
Trap: Vocabr 3000, type K
Purge: 10 min. @ 40 mL/min., at 60°C
Dry purge: 3 min. @ 40 mL/min.
Desorb preheat: 220°C
Desorb: 245°C, 2 min., 40 mL/min.
Bake: 230°C, 6 min.
Interface: 1:20 split at injection port with 1mm ID inlet liner
Transfer line: 0.53mm ID Silcosteel® MXT® tubing, cat#20591

Restek Corporation 110 Benner Circle Bellefonte, PA 16823

814-353-1300 • 800-356-1688 • Fax: 814-353-1309 • www.restek.com