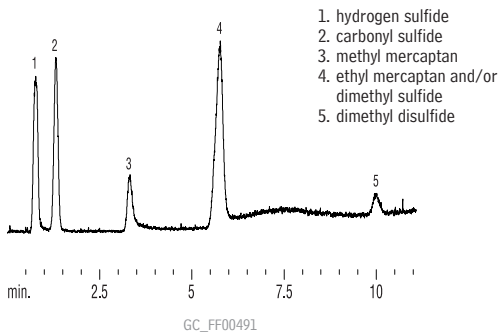


Sulfur Compounds in Beverage Grade CO₂ Rt-XLSulfur™



1m, 0.75mm ID Sulfinert® tubing
Rt-XLSulfur™ 100/120 mesh (cat.# 19806)
Conc.: sulfur standard @ 20ppb each in CO₂
Inj.: 1cc sample loop, 6-port Valco® valve
Carrier gas: helium
Flow rate: 10mL/ min. @ ambient temp.
Oven temp.: 60°C to 260°C @ 15°C/min. (hold 5 min.)
Det. sensitivity: SCD, attn. x 1
Det. temp.: 800°C