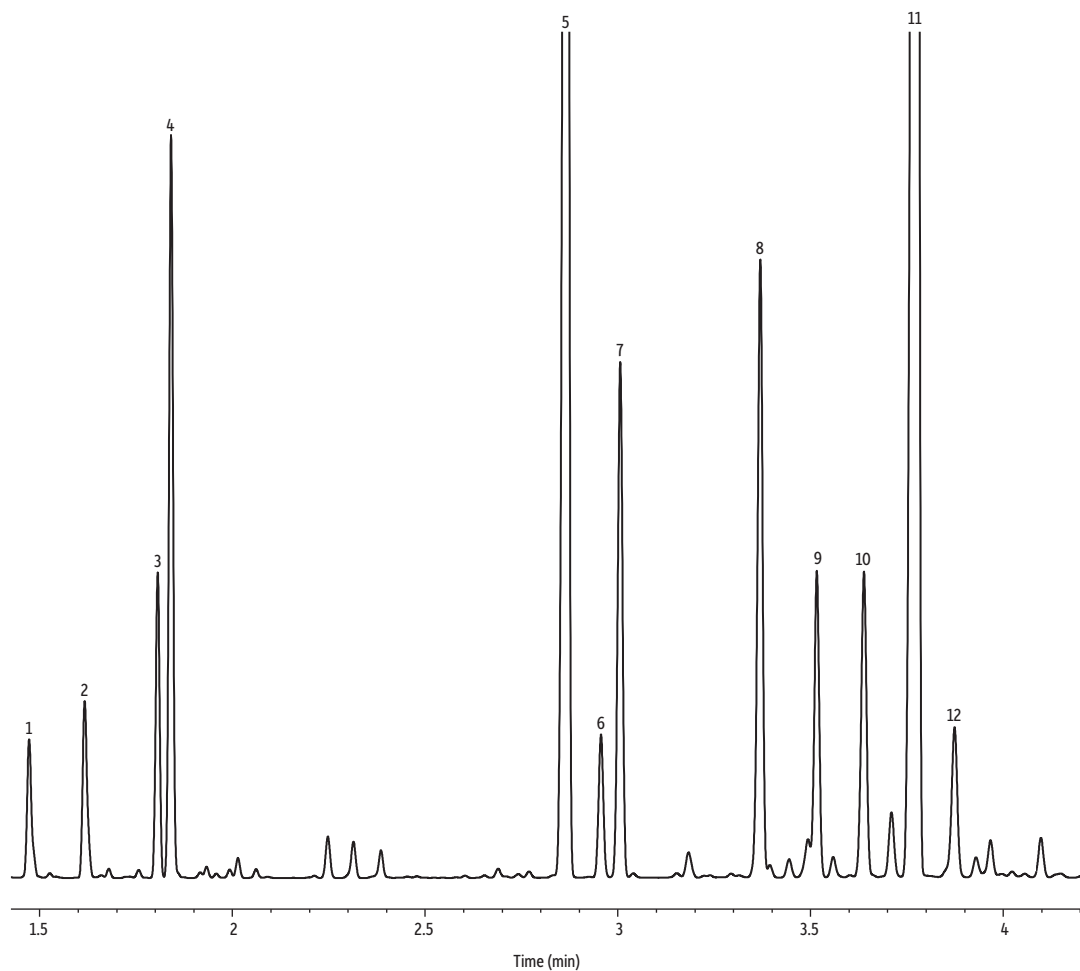


Peppermint Oil on Rtx-Wax



GC_FF1302

Peaks	tr (min)
1. α -Pinene	1.473
2. β -Pinene	1.617
3. D-Limonene	1.806
4. Eucalyptol	1.841
5. Menthone 1	2.867
6. Menthofuran	2.956
7. Menthone 2	3.006
8. Menthyl acetate	3.370
9. Neoisomenthol	3.516
10. Caryophyllene	3.638
11. Menthol	3.775
12. Pulegone	3.874

Column Rtx-Wax, 30 m, 0.32 mm ID, 0.25 μ m (cat.# 12424)
Sample Peppermint oil
Diluent: Acetone
Conc.: 5%
Injection
Inj. Vol.: 1 μ L split (split ratio 100:1)
Liner: Topaz 4.0 mm ID Precision inlet liner w/wool (cat.# 23305)
Inj. Temp.: 230 $^{\circ}$ C
Oven
Oven Temp.: 100 $^{\circ}$ C (hold 0.5 min) to 250 $^{\circ}$ C at 16 $^{\circ}$ C/min (hold 10 min)
Carrier Gas Hz, constant flow
Flow Rate: 2 mL/min
Detector FID @ 250 $^{\circ}$ C
Constant Column +
Constant Make-up: 52 mL/min
Make-up Gas Type: N₂
Hydrogen flow: 40 mL/min
Air flow: 400 mL/min
Data Rate: 50 Hz
Instrument Agilent 7890A GC
Notes All peaks were identified using the NIST MS EI spectra library (2005).