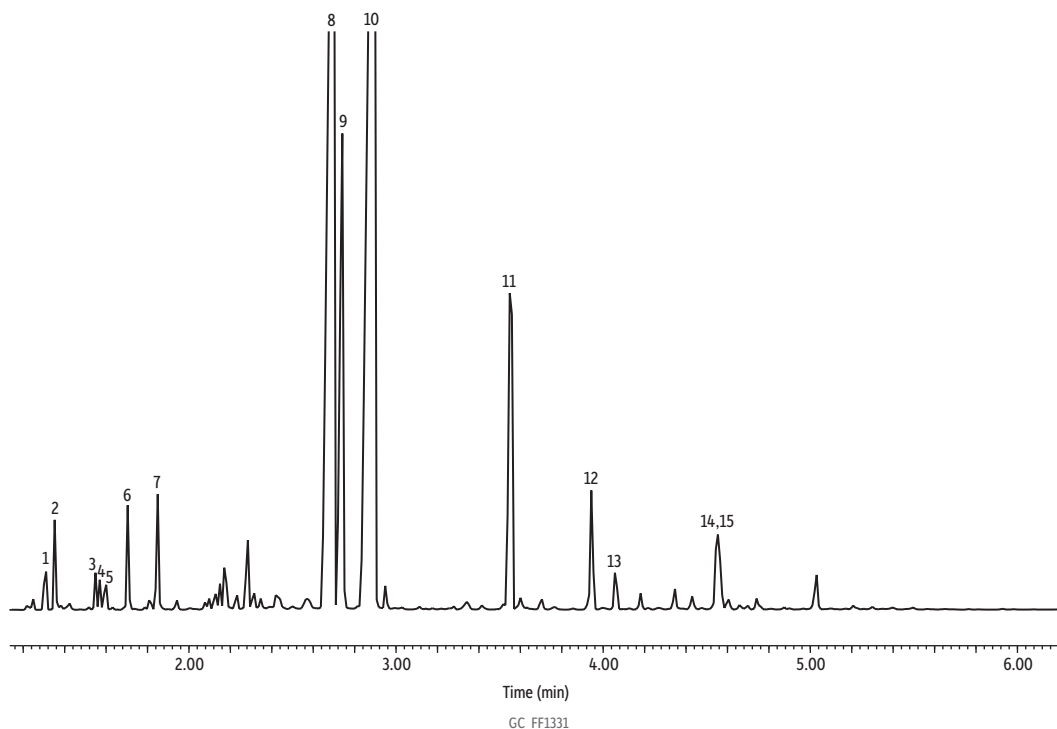


Lemongrass Oil on Rxi-5Sil MS (20 m, 0.18 mm ID, 0.18 µm)



| Peaks | tr (min) | Peaks | tr (min) |
|-----------------------------|----------|---------------------|----------|
| 1. Camphene | 1.308 | 8. Z-Citral | 2.697 |
| 2. 6-Methyl-5-heptene-2-one | 1.352 | 9. Geraniol | 2.741 |
| 3. β-Ocimene | 1.549 | 10. E-Citral | 2.893 |
| 4. D-Limonene | 1.570 | 11. Geranyl acetate | 3.553 |
| 5. α-Ocimene | 1.598 | 12. Caryophyllene | 3.943 |
| 6. 4-Nonanone | 1.704 | 13. α-Caryophyllene | 4.057 |
| 7. Linalool | 1.849 | 14. α-Amorphene | 4.553 |
| | | 15. δ-Cadinene | 4.553 |

Column Rxi-5Sil MS, 20 m, 0.18 mm ID, 0.18 µm (cat.# 43602)
Sample Lemongrass oil
Diluent: Acetone
Conc.: 5%
Injection
 Inj. Vol.: 1 µL split (split ratio 100:1)
 Liner: Topaz 4.0 mm ID Precision inlet liner w/wool (cat.# 23305)
 Inj. Temp.: 250 °C
Oven
 Oven Temp.: 100 °C (hold 0.25 min) to 320 °C at 17.5 °C/min (hold 10 min)
Carrier Gas He, constant flow
Flow Rate: 1.01 mL/min
Detector MS
Mode: Scan
Scan Program:

| Group | Start Time (min) | Scan Range (amu) | Scan Rate (scans/sec) |
|-------|------------------|------------------|-----------------------|
| 1 | 1.00 | 35-500 | 5 |

Transfer Line Temp.: 300 °C
 Analyzer Type: Quadrupole
 Source Type: Inert
 Source Temp.: 230 °C
 Quad Temp.: 150 °C
Instrument Agilent 7890A GC & 5975C MSD
Notes All peaks were identified using the NIST MS EI spectra library (2005).