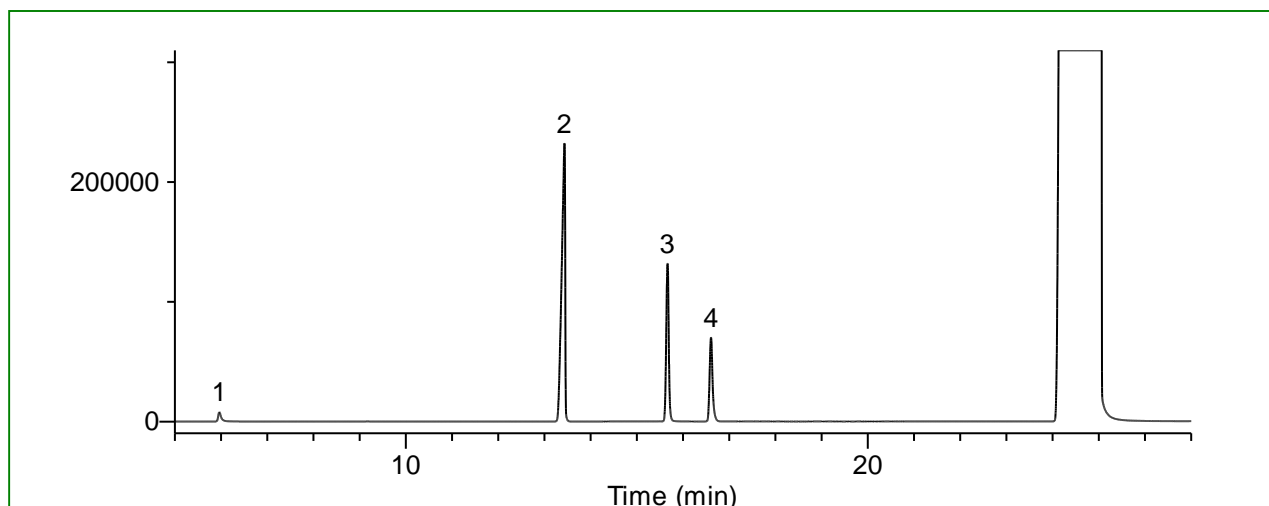


Purity Test of Benzyl Alcohol with Reference to the Japanese Pharmacopoeia

Benzyl alcohol is a colourless, clear, aromatic alcohol with a bactericidal effects.

In this application note, benzaldehyde and other related substances were diluted with benzyl alcohol and analyzed with reference to the purity test described in the Japanese Pharmacopoeia. The data shown here details the successful results.

Example: Measurement of standard



Conditions

System : GC - FID
Column : InertCap Pure-WAX
 0.32 mm I.D. x 30m df = 0.50 μ m
Col. Temp. : 50 °C - 5 °C/min - 220 °C (35 min hold)
Carrier Gas : He 60 kPa
Injection : Splitless 1 min Vent flow 50 mL/min
 200 °C
Detection : FID Range 10¹⁰
 310 °C
Sample Size : Analytes in Benzyl alcohol 0.1 μ L

Analyte :

1. Ethylbenzene	0.1 mg/mL
2. Bicyclohexyl	3.0 mg/mL
3. Benzaldehyde	1.5 mg/mL
4. Cyclohexanemethanol	1.0 mg/mL

*The resolution between Benzaldehyde and Cyclohexylmethanol is 16.2.

Repeatability $n = 6$

	Ethylbenzene	Bicyclohexyl	Benzaldehyde	Cyclohexylmethanol
Ave.	35673	1158092	483944	301732
SD	559	13782	4901	3877
RSD (%)	1.6	1.2	1.0	1.3

GL Sciences disclaims any and all responsibility for any injury or damage which may be caused by this data directly or indirectly. We reserve the right to amend this information or data at any time and without any prior announcement.

GL Sciences, Inc. Japan

22-1 Nishishinjuku 6-Chome
 Shinjuku-ku, Tokyo,
 163-1130, Japan
 Phone: +81-3-5323-6620
 Fax: +81-3-5323-6621
 Email: world@glsc.co.jp
 Web: www.glsciences.com

GL Sciences B.V.

De Sleutel 9
 5652 AS Eindhoven
 The Netherlands
 Phone: +31 (0)40 254 95 31
 Email: info@glsciences.eu
 Web: www.glsciences.eu

GL Sciences, Inc. USA

4733 Torrance Blvd. Suite 255
 Torrance, CA 90503
 Phone: 310-265-4424
 Fax: 310-265-4425
 Email: info@glsciencesinc.com
 Web: www.glsciencesinc.com

GL Sciences (ShangHai) Ltd.

Tower B, Room 2003,
 Far East International Plaza,
 NO,317 Xianxia Road,
 Changning District.
 Shanghai, China P.C. 200032
 Phone: +86 (0)21-6278-2272
 Email: contact@glsciences.com.cn
 Web: www.glsciences.com.cn

International Distributors

Visit our Website at www.glsciences.com/distributors