



Get closer to the truth

Thermo Scientific Ardia Platform





Digital transformation is a journey driven by the desire to fundamentally improve laboratory working practices by leveraging the latest advances in IT. The Thermo Scientific™ Ardia™ platform allows the laboratory to harness the same technology.

With the need to eliminate errors, operate more efficiently, and reach confident results faster, laboratories are increasingly needing software that will connect all their data, instruments and scientists.

Built using cloud technology, the Ardia platform scales from on premise to cloud, centralizes chromatography and mass spectrometry data, maximizes instrument utilization, and accelerates data analysis to help scientists get closer to the truth.

Bring your laboratory into a new era with the

Collaborate

Collaborating means more than just connecting and centralizing data. Work through a web-based application, with real-time global access, to enable seamless communication between software and easily share data and work together to deliver faster insights.

Streamline

Streamline operations with a clean, intuitive user interface that makes navigation straightforward. Web browser access to the platform facilitates data access and remote working from anywhere at any time. Built-in tools simplify repetitive tasks, ease administrative effort and reduce training requirements.

Secure

Keep data secure, controlled and audit ready with embedded user and data management tools customizable to your organization's specific needs. Built-in features manage users, track actions, and simplify data backup and archival, streamlining operations and delivering resilience.

Connect

Connect multiple software applications to one central platform for seamless operation and ease of data sharing.

Integrate both chromatography and MS instruments for automated file transfer to centralized data storage, eliminating siloed data across multiple hard drives and making it globally available.



of connectivity

Ardia platform



The screenshot shows the Thermo Scientific Ardia Platform home dashboard. At the top left, there is a navigation menu with icons for Home, Data Explorer, Instruments, and Data Viewer. The main header area includes the Thermo Scientific logo, the text 'Thermo Scientific Ardia Platform', and a 'Home' button. On the right side of the header, there is a notification bell icon with a red badge showing '38', and user profile icons. Below the header is a large banner image of divers underwater with the text 'Thermo Scientific Ardia Platform'. The dashboard is organized into two main sections: 'Core applications' and 'Utilities'. Each section contains several application tiles with icons, titles, and brief descriptions. The 'Core applications' section includes Data Explorer, Data Viewer, and Instruments. The 'Utilities' section includes Audit Trail Viewer, Client Registration and Management, Global Settings, IdP Configuration, and Users and Roles.

Thermo Scientific Ardia Platform | Home

38

Home

Data Explorer

Instruments

Data Viewer

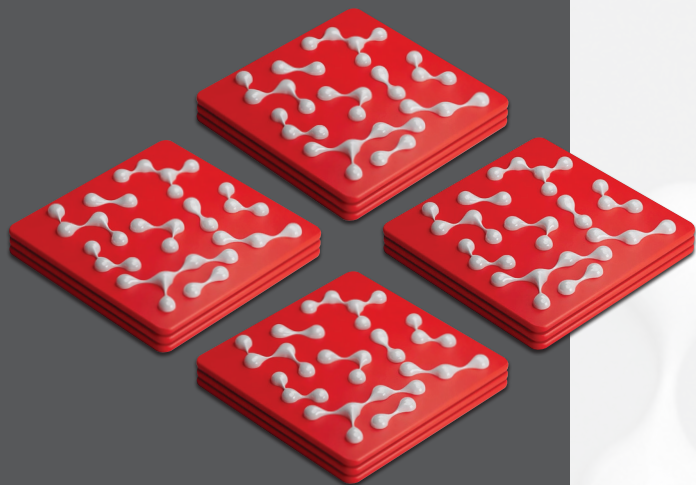
Thermo Scientific Ardia Platform

Core applications

- Data Explorer**: Browse and manage folders, files, and data objects stored on the Ardia platform.
- Data Viewer**: Visualize and qualitatively analyze chromatography and mass spectrometry data.
- Instruments**: Manage, schedule, and monitor data acquisition on all instruments connect to the Ardia platform.

Utilities

- Audit Trail Viewer**: Display audited events, such as user access and data operations. Audit records including versioning and timestamps.
- Client Registration and Management**: Create and manage application registration codes utilized to connect Thermo Scientific desktop applications to the Ardia platform.
- Global Settings**: Define administrative settings that are applied across the Ardia platform.
- IdP Configuration**: Configure, edit, and remove the identity providers used by the Ardia platform.
- Users and Roles**: Add new users and managing existing users in the Ardia platform. Define roles, users, and configure permissions.



Take control of

Data management

Managing large volumes of data, in multiple formats, which are often stored locally on separate devices and applications is difficult to secure, time-consuming to manage and inefficient to utilize.

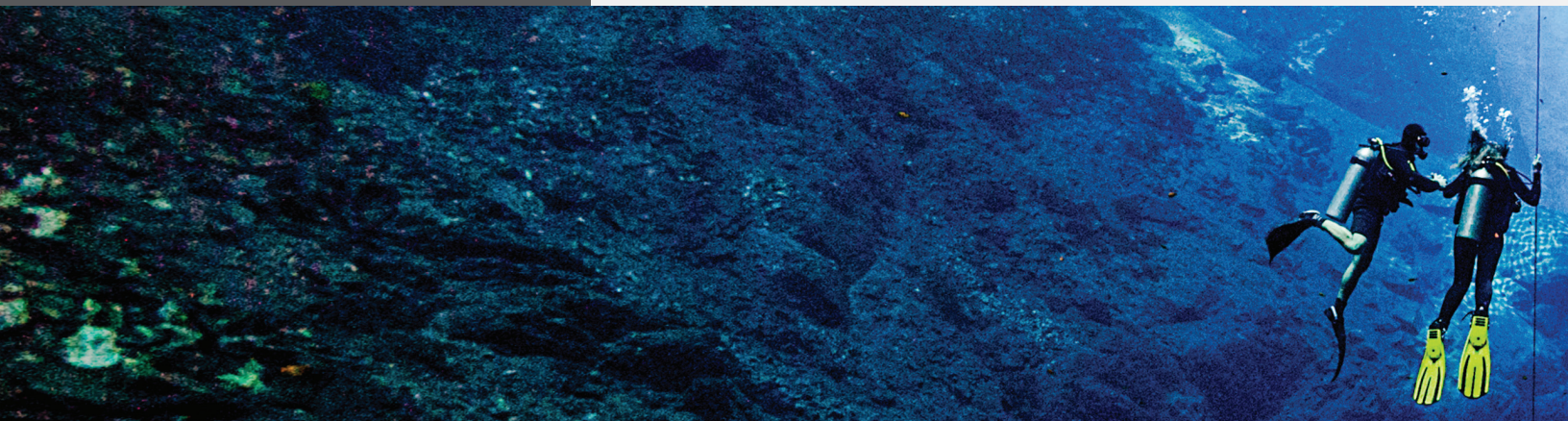
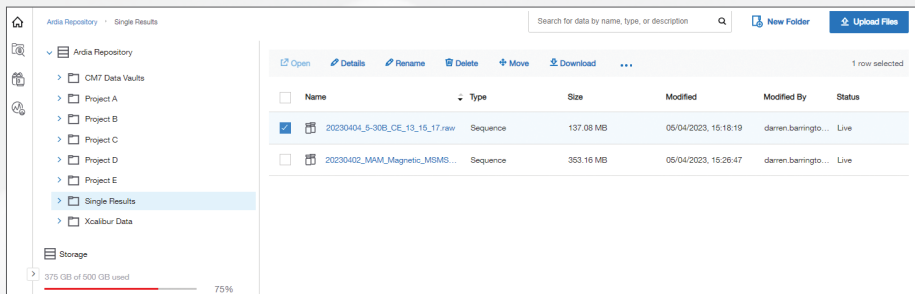
The data management capabilities built into the Ardia platform remove these barriers. Automated central data storage, with backup and archival capabilities, enables information from various applications to be securely accessed, viewed and organized more effectively.

Manage

The Ardia platform provides secure, single-point data storage and access of data from Thermo Scientific™ Xcalibur™ software, Thermo Scientific™ Chromeleon™ CDS, Thermo Scientific™ Proteome Discoverer™ software and Thermo Scientific™ Biopharma Finder™ software.

Data is automatically stored in the central repository. Backup and archive capabilities are included as standard, providing disaster resilience and continuous high performance.

The Ardia Data Explorer enables customizable file structuring based on your organization's requirements and straightforward searching to quickly retrieve records.



your data

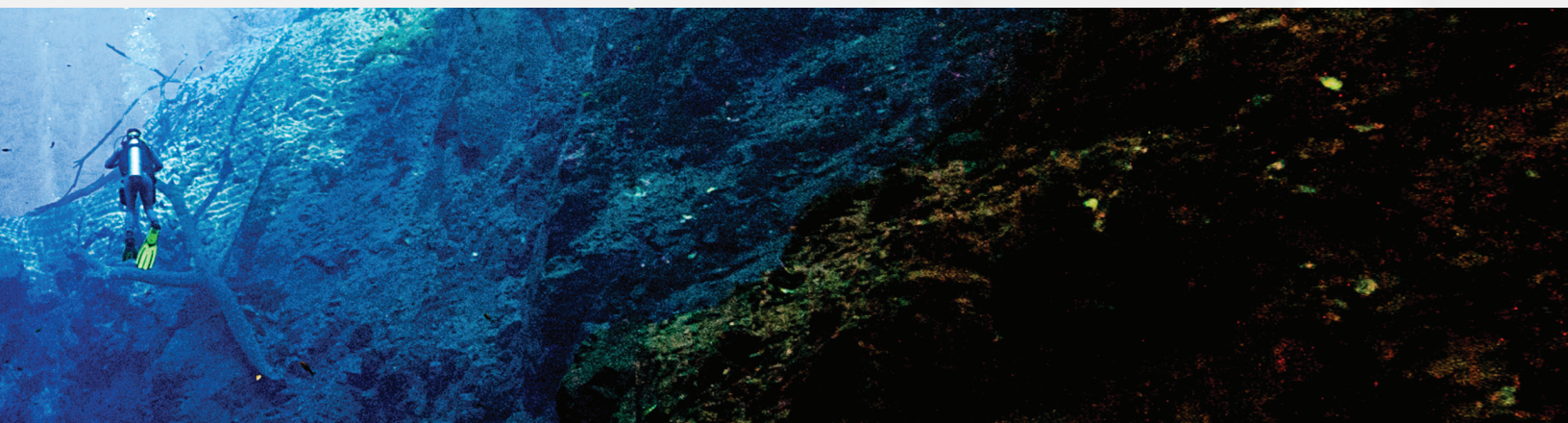
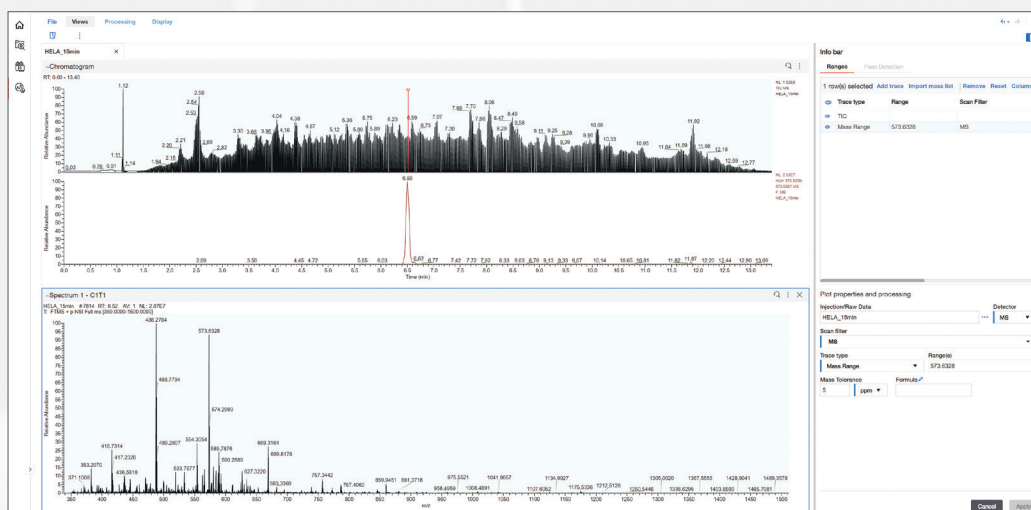
to ensure security and availability

Review

The intuitive Ardia Data Viewer provides a single location for review of chromatography and mass spectrometry data without the need for any file conversion, delivering consistency across software products.

With a new user interface, it's easy to display chromatograms and spectra, quickly create extracted ion chromatograms, perform peak integration, export spectral data to mzCloud for easy compound annotation, and view diagnostic channels like pump pressure for troubleshooting.

Expedite data review with user-friendly features that include the ability to import a mass list, export plots in .svg format for high resolution visualizations, and quickly display linked data dependent acquisitions.





Instrument management

Managing a set of individual instruments is often a manual, time consuming task.

Bringing them together in one place, the Ardia Instruments application enables monitoring and management of all connected instruments to maximize utilization and eliminate paper records.

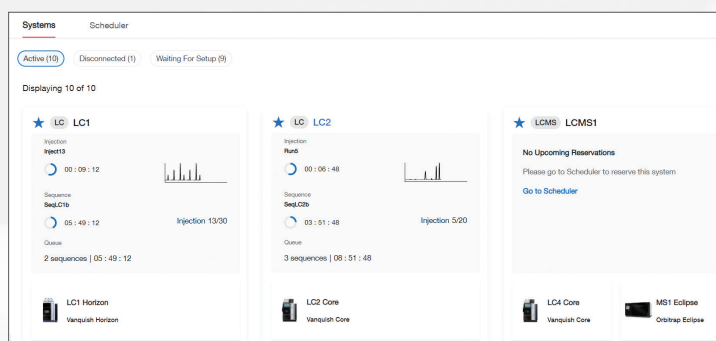
This can significantly improve productivity by minimizing downtime, reducing delays and improving lab efficiency.

The Ardia Instruments application manages instruments, people and projects.

Effective instrument

Visualize

Easily view all connected systems from a central location with instrument cards providing real-time status and data acquisition information for a holistic view to enable fast, informed decisions.



Manage

Asset management is facilitated through detailed instrument information including location, firmware versions, and warranty and contract information. Instrument support is accelerated via in-app service ticket and support package generation for immediate delivery to Thermo Fisher technical support.

The screenshot shows a 'New Support Request' form. At the top, it says 'Creating a new support request will open a service ticket.' Below this is a progress bar with four steps: 1. Choose instrument, 2. Ticket details (highlighted), 3. Contact Information, and 4. Confirmation. Below the progress bar, there is a section 'Please provide additional information for support request.' This section includes a 'Symptom' dropdown menu with 'Communication Issues' selected, and a 'Select date' field with '11-APR-2023' selected. Below this is a text area for 'Incident description' with the placeholder text 'Please provide a description of the incident. Include any additional notes or comments you would like the service representative to be aware of.' At the bottom, there is a section 'Attach a file' with the text 'Share a file with tech support representative related to your support request.' and a 'Browse file(s)' button.



management

will drive laboratory productivity

Utilize

Increase laboratory efficiency by optimizing instrument utilization. The Ardia Instruments Scheduler provides a single point to plan work, view system availability, reserve time and set maintenance windows on all connected instruments to minimize downtime.

Instrument	17	18	19	20	21
★ GCMS1 GCMS	John D - Pesticides		John D - PAHs		
★ LCMS1 LCMS	Maya W - Glycopeptide...	Lily L - Peptide Mapping		Maya W - Glycopeptides ...	
★ LCMS2 LCMS	Carrie B - Nitrosamines		Ian P - Antibiotics		
★ GCMS GCMS	Service Visit				
★ IC1 IC	Imran M - Polar pestici...	Maria T - Water Analysis		Imran M - Water ...	
★ LC1 LC	Asif W - Vitamins				

Record

Digitize, standardize and centralize instrument logbooks with automated event logging plus manual entry tools to record maintenance activities, custom notes and images. Automatic tracking of instrument module movements between systems ensures records are always complete and correct. This all ensures instruments are controlled and working correctly, delivering confidence in results.

LCMS2 ★ [Request Support](#)

MS2 Altis Plus | Location: San Jose | Room: PE Lab | Owners: administrator | Instrument Tags: | Configured with: LC7 Horizon Vanquish Horizon

Instrument Information | **Logbook** | Instrument Notifications

April 2023

M	T	W	T	F	S	S
					1	2
3	4	5	6	7	8	9
10	11	12	13	14	15	16
17	18	19	20	21	22	23
24	25	26	27	28	29	30

This week Today Create Entry

Tuesday 11 April 2023

- LC | LC7 Horizon + MS | MS2 Software Installed** 003:42
 - Chromeleon 7.3.2.10557
 - [+ Add note or attachment](#)
- MS | MS2 Altis Plus Software Installed** 003:42
 - TSO Quantis Plus 3.4.3282
 - [+ Add note or attachment](#)
- Configuration LC | LC7 Horizon + MS | MS2 New configuration** 003:42



Ardia Platform

Helping scientists get closer to the truth.

Learn more at thermofisher.com/ardia

thermo scientific