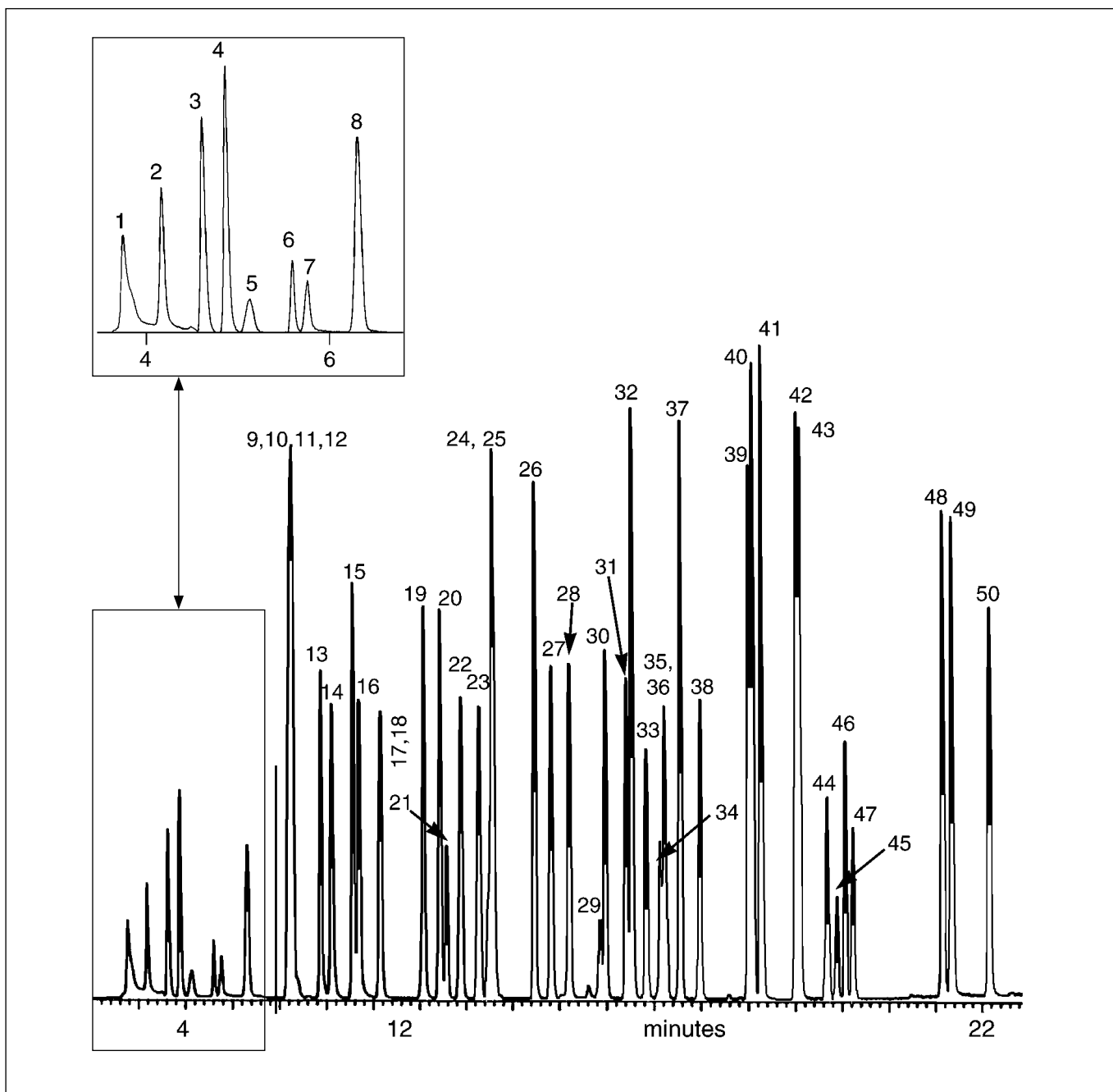


Analysis of volatiles from drinking water

BP624

Column part number	054835		
Phase	BP624	Final temperature	210°C, 1 min
Column	50 m x 0.53 mm x 3.0 µm	Detector	MS
Initial temperature	35°C, 2 min	Injection mode	Purge & Trap
Rate 1	8°C/min to 180°C, 5 min	Carrier gas	He, 10 mL/min
Rate 2	15°C/min to 210°C		



Analysis of volatiles from drinking water

BP624

Components

1. Carbon dioxide	14. Methylene chloride	27. 1,2-Dichloroethene	40. Ethylbenzene
2. Dichlorodifluoromethane	15. trans-1,2-Dichloroethene	28. Bromodichloromethane	41. m,p-Xylene
3. Chloromethane	16. Acrylonitrile	29. 4-Methyl-2-pentanone	42. o-Xylene
4. Vinyl chloride	17. 1,1-Dichloroethane	30. cis-1,3-Dichloropropene	43. Styrene
5. Acetaldehyde	18. Vinyl acetate	31. Toluene-(d8) (Surrogate)	44. Bromoform
6. Bromomethane	19. 2-Butanone (MEK)	32. Toluene	45. 1,4-Dichlorobutane (Int. Std)
7. Chloroethane	20. cis-1,2-Dichloroethene	33. trans-1,3-Dichloropropene	46. Bromofluorobenzene
8. Trichlorofluoromethane	21. Bromochloromethane (Int. Std.)	34. 2-Bromo-1-chloropropane (Int.Std)	47. 1,1,2,2- Tetrachloroethene
9. Trichlorofluoroethane	22. 1,1,1-Trichloroethane	35. 1,1,2-Trichloroethane	48. 1,3-Dichlorobenzene
10. Acrolein	23. Carbon tetrachloride	36. 2-Hexanone	49. 1,4-Dichlorobenzene
11. Acetone	24. 1,2-Dichloroethane-d4 (Surrogate)	37. Tetrachloroethene	50. 1,2-Dichlorobenzene
12. 1,1-Dichloroethene	25. 1,2-Dichloroethane	38. Dibromochloromethane	
13. Carbon disulfide	26. Trichloroethene	39. Chlorobenzene	

For more information visit www.trajanscimed.com or contact techsupport@trajanscimed.com