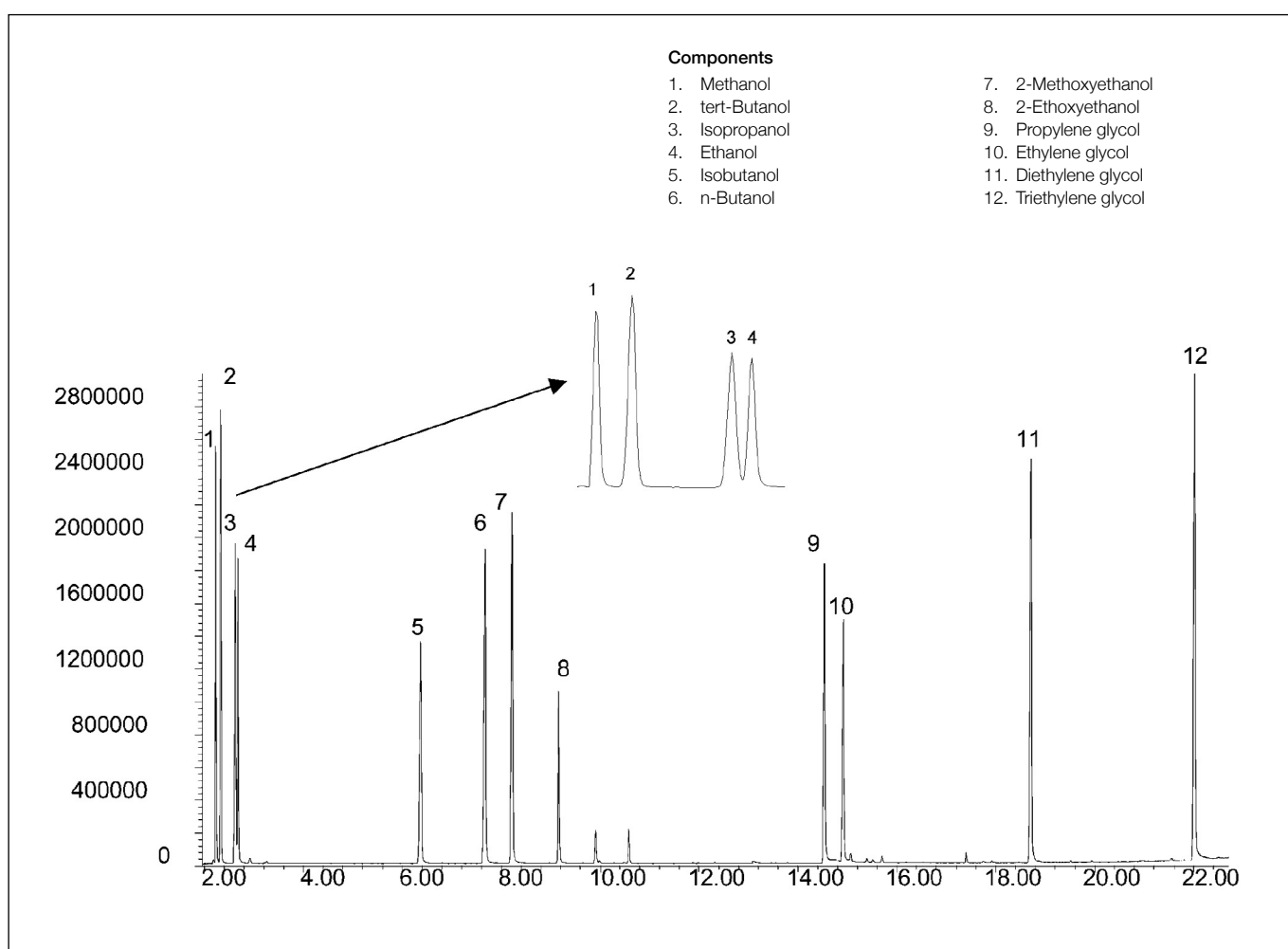


Analysis of branched alcohols

SolGel-WAX™

Column part number	054796		
Phase	SolGel-WAX™	Carrier gas flow	2.3 mL/min
Column	30 m x 0.25 mm x 0.25 µm	Constant flow	On
Sample	Neat solvent mixture	Average linear velocity	35 cm/sec at 40°C
Initial temperature	40°C, 5 min	Injection mode	Split (100:1)
Rate	10°C/min	Injection volume	0.1 µL
Final temperature	230°C	Injection temperature	250°C
Detector	MS	Liner type	Split/Splitless Focus
Carrier gas	He, 33.14 psi	Full scan / SIM	Full scan 20-450


 For more information visit www.trajanscimed.com or contact techsupport@trajanscimed.com