

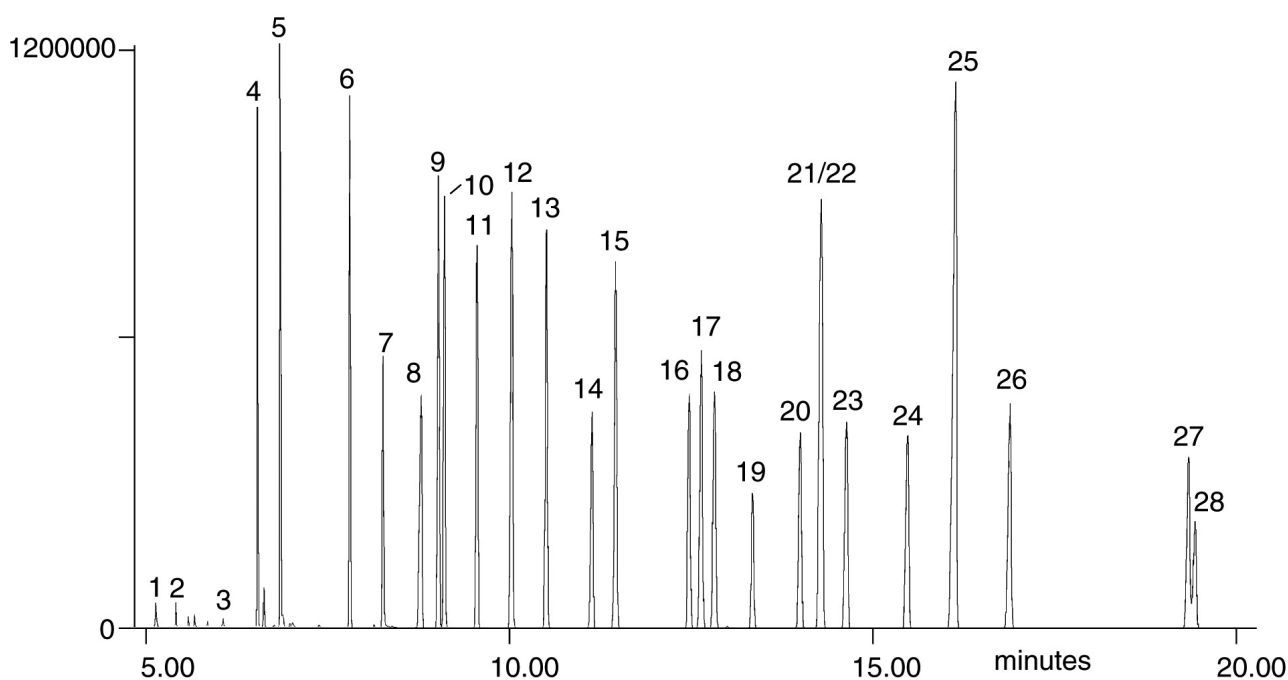
Analysis of a pesticide mixture

BPX5

Column part number	054142		
Phase	BPX5	Detector	MS
Column	30 m x 0.22 mm x 0.25 μ m	Injection mode	Splitless, 1 min
Initial temperature	50°C, 1 min	Carrier gas	He, 35 cm/sec
Rate 1	30°C/min to 190°C	Injection volume	1 μ L
Rate 2	4°C/min to 280°C	Interface/source/quad	320°C, 250°C, 150°C
Final temperature	280°C, 5 min		

Components

- | | | | |
|-----------------------------|--------------------------|-------------------|---------------------|
| 1. Methylidymron decomp. I | 8. Simazine (CAT) | 15. Chlorpyrifos | 22. Flutolanil |
| 2. Methylidymron decomp. II | 9. Diazinon | 16. Pendimethalin | 23. Isoprothiolane |
| 3. Trichlorfon (DEP) | 10. Propyzamide | 17. Isophenphos | 24. Isoxathion |
| 4. Etridiazole | 11. Chlorothalonil (TPN) | 18. Methylidymron | 25. Bensulide |
| 5. Chloroneb | 12. Terbutcarb (MBPMC) | 19. Captan | 26. Mepronil |
| 6. Benfluralin | 13. Tolclofos - methyl | 20. Butamifos | 27. Pyridaphenthion |
| 7. Pencycuron | 14. Fenitrothion (MEP) | 21. Napropamide | 28. Iprodione |


 For more information visit www.trajanscimed.com or contact techsupport@trajanscimed.com