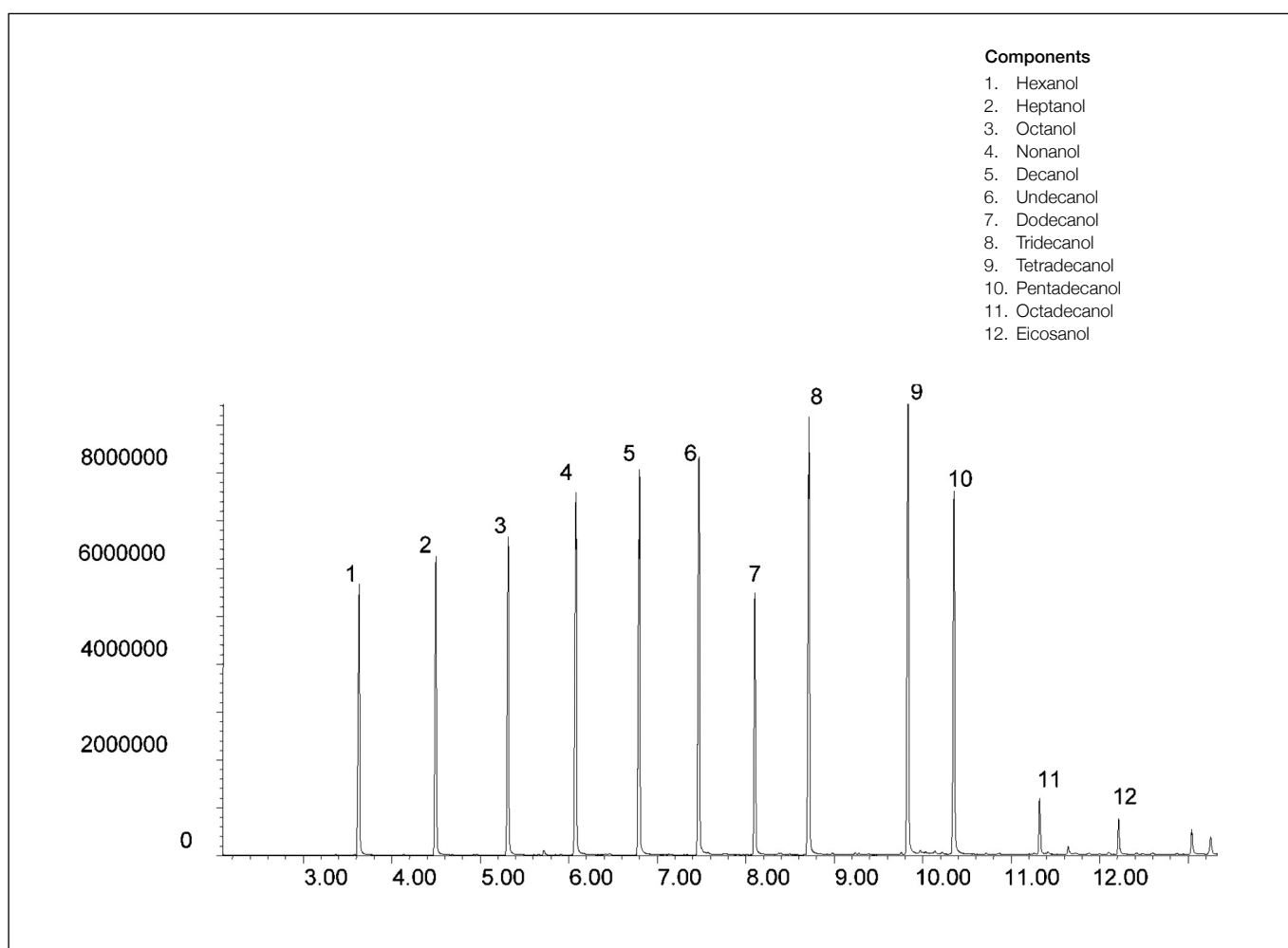


Analysis of aliphatic alcohols

BPX35

| | | | |
|---------------------------|-------------------------------|-------------------------|----------------------|
| Column part number | 054701 | | |
| Phase | BPX35 | Carrier gas flow | 1.8 mL/min |
| Column | 30 m x 0.25 mm x 0.25 μ m | Constant flow | On |
| Sample | 200 ppm in Dichloromethane | Average linear velocity | 35 cm/sec at 40°C |
| Initial temperature | 40°C, 1 min | Injection mode | Split (100:1) |
| Rate | 20°C/min to 300°C | Injection volume | 1 μ L |
| Final temperature | 300°C, 5 min | Injection temperature | 250°C |
| Detector | MS | Liner type | 4 mm ID Single Taper |
| Carrier gas | He, 25.7 psi | Full scan / SIM | Full scan 45-450 |



For more information visit www.trajanscimed.com or contact techsupport@trajanscimed.com