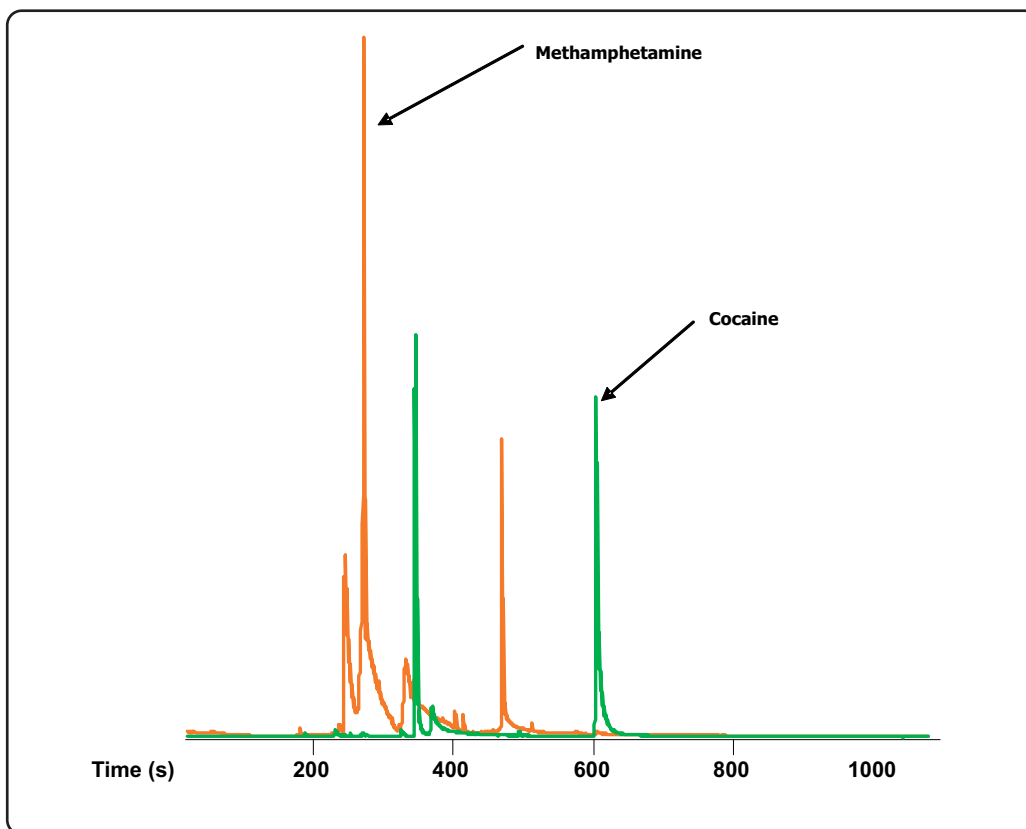


SPME-GC-TOFMS of Drugs in Urine Toxicology Analysis without Derivatization

Life Science and Chemical Analysis Centre
LECO Corporation, Saint Joseph, Michigan USA



SPME-GC-TOFMS analysis of underivatized urine samples spiked with approximately 460 picograms per μL of methamphetamine and cocaine.

Column:

10 m x 0.1 mm x 0.20 μm film Rtx-5

TOFMS:

40 to 450 m/z @ 5 spectra/s

For questions on this analysis e-mail us at:
life_science@leco.com

For a complete listing of snapshots and application notes visit us on the web at www.leco.com

