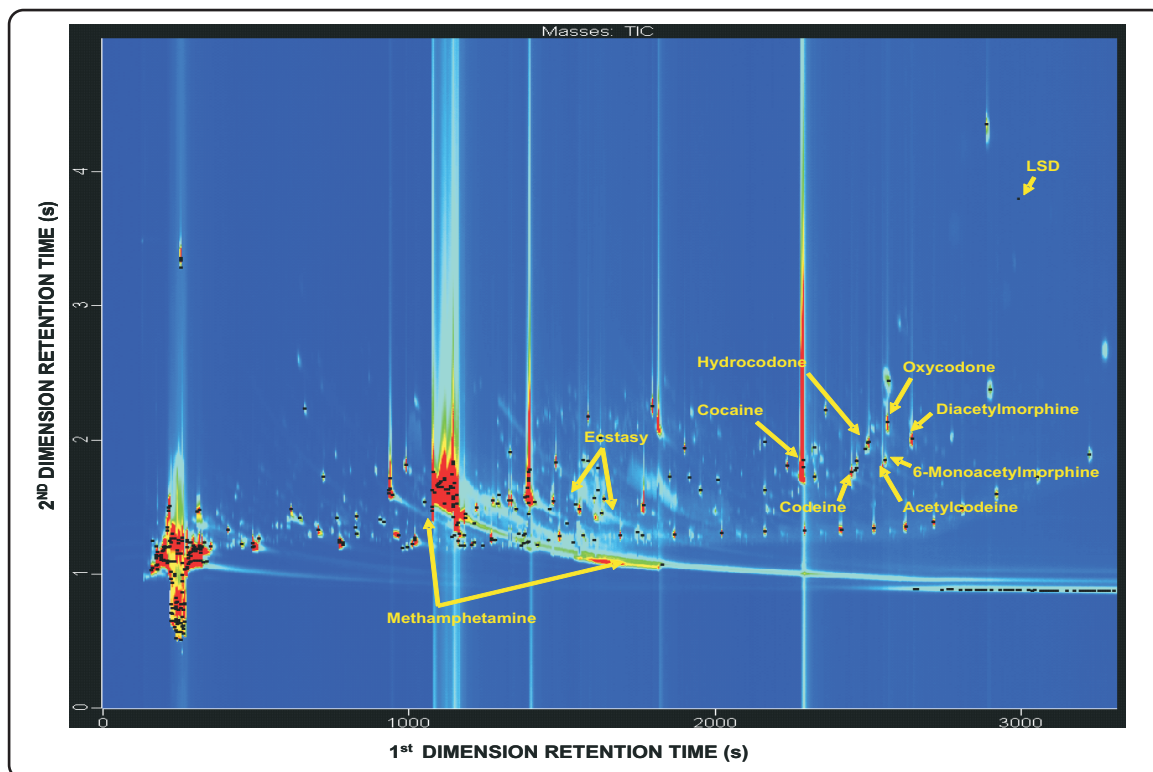


# Automated SPME-GCxGC-TOFMS Analysis of Non-Derivatized Drugs in Urine

Life Science and Chemical Analysis Centre  
LECO Corporation, Saint Joseph, Michigan USA

Application Snapshot



The total ion chromatogram above shows a two dimensional contour plot of a 250 ng/mL drug mix standard spiked into an 8 mL aliquot of urine analyzed by automated solid phase microextraction (SPME) followed by comprehensive two dimensional gas chromatography time-of-flight mass spectrometry (GCxGC-TOFMS). The contour plot is labeled with the 10 non-derivatized drugs identified with NIST library matches greater than 75%. Over 9000 peaks were identified with a S/N ratio of 50 or more for this analysis.

#### Columns:

30 m x 0.25 mm x 0.25  $\mu$ m Rxi-5MS  
1.5 m x 0.18 mm x 0.20  $\mu$ m Rtx-200

#### TOFMS:

45 to 550 m/z @ 200 spectra/s

For questions on this analysis  
e-mail us at: [life\\_science@leco.com](mailto:life_science@leco.com)

For a complete listing of snapshots  
and application notes visit us on the  
web at [www.leco.com](http://www.leco.com)



LECO