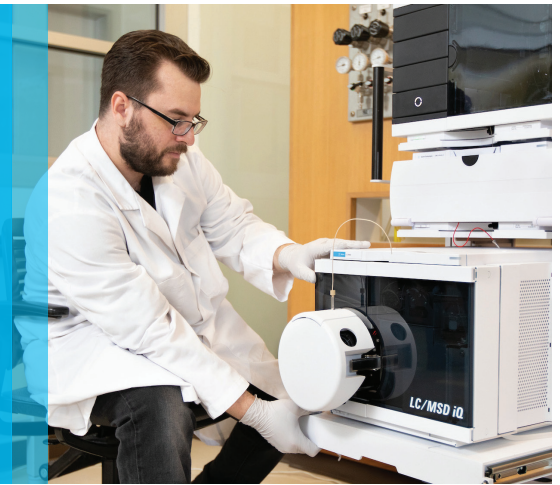


# Refresh Your Lab to Achieve More Accurate Results

Smart, integrated Agilent LC/MS systems



## Take advantage of our limited-time Technology Refresh program discount

We know you're comfortable with your DAD, but diode-array detection doesn't have all the answers. And ambiguous results can cost you time, money, and headaches in the lab.

Take your results to a new level by adding mass detection to your lab's analytical toolbox.

Give your lab the advantages of a smart, integrated LC/MS system that combines the Agilent InfinityLab LC/MSD iQ and Agilent 1260 Infinity II LC system. These instruments are designed for all user skill levels and optimized to work together with the InfinityLab portfolio to streamline your workflow.

The addition of the Agilent InfinityLab Flex Bench MS further optimizes your whole lab setup. You can now keep your InfinityLab LC/MSD Series systems in one stack with easy access to all areas.

Plus, if you act now, you can take advantage of our Technology Refresh program discount.



Agilent InfinityLab LC/MSD iQ with the 1260 Infinity II Prime LC in the InfinityLab Flex Bench MS.

### Limited-time offer

Save on your upfront costs—and increase your lab productivity—with our Technology Refresh program discount.

Use **promo code 1607** in the United States only. All other countries use **promo code 1608**.

Don't wait... request your quote today.  
Contact your Agilent representative or visit  
[explore.agilent.com/gain-confidence](https://www.agilent.com/gain-confidence)

DE.5341550926

This information is subject to change without notice.

© Agilent Technologies, Inc. 2020  
Published in the USA, March 24, 2020  
5994-1830EN