

Maximize LC Instrument Uptime

Agilent LC Instrument and Module kits



Maintain the Efficiency of Your LC Workflow

Noisy baselines. Shorter column life. Lower analytical sensitivity. Variable retention times. Any—or all—of these problems can be caused by a lack of preventive maintenance. That's why it's critical to set up an LC instrument maintenance program, and to keep essential supplies in stock for regular replacement of worn or damaged components.

Keep your instruments operating at their best

You can keep LC pumps, autosamplers, and detectors operating at their best with Agilent preventive maintenance kits. These kits contain the seals, frits, stators, fittings, connections, and other components needed to maximize LC instrument uptime. As well as complete instructions on how to access parts for cleaning or replacement.

This guide provides ordering information for Agilent LC Instrument and Module kits so you can always have the supplies you need when you need them.

Due to our modular system approach, preventive maintenance kits are developed per module so choosing a pump and autosampler kits plus a detector lamp will cover the standard systems.

System kits

InfinityLab convenience kits provide a carefully selected portfolio of InfinityLab supplies for efficient ramp up usage of new InfinityLab LC instruments.

InfinityLab capillary kits provide a complete set of system capillaries, including InfinityLab fittings available in 0.17 and 0.12 mm internal diameters.

Convenience kits

Description	Kit contents	Part no.
InfinityLab convenience kit, for 1260 Infinity II LC	Includes solvent bottles 1 L (3 clear, 1 amber), identification rings and removable stickers for solvent bottles, vials (2 mL) clear with bonded preslit caps (500/pk), solvent inlet filters stainless steel (4/pk), inline filter kit, multifunction tool, Stay Safe cap starter kit, and complete contents of 1260 Infinity II capillary kit (5067-6614)	5067-6617
InfinityLab convenience kit, for 1290 Infinity II LC	Includes solvent bottles 1 L (3 clear, 1 amber), identification rings and removable stickers for solvent bottles, vials (2 mL) clear with bonded preslit caps (500/pk), solvent inlet filters stainless steel (4/pk), inline filter kit, multifunction tool, Stay Safe cap starter kit, and complete contents of 1290 Infinity II capillary kit (5067-6615)	5067-6616
InfinityLab convenience kit, for 1260 Infinity II Bio-inert LC	Includes solvent bottles 1 L (3 clear, 1 amber), identification rings and removable stickers for solvent bottles, vials (2 mL) clear with bonded preslit caps (500/pk), solvent inlet filters glass (20 µm), multifunction tool, Stay Safe cap starter kit, and complete contents of 1260 Infinity II bio-inert capillary kit (5067-6621)	5067-6620

Capillary kits

Description	Kit contents	Part no.
InfinityLab capillary kit, 0.17 mm, for 1260 Infinity II LC	Complete set of system capillaries, Quick Connect and Quick Turn fittings, PEEK finger-tight fittings, stainless steel restriction capillary, and blank nut	5067-6614
InfinityLab capillary kit, 0.12 mm, for 1290 Infinity II LC	Complete set of system capillaries, Quick Connect and Quick Turn fittings, PEEK finger-tight fittings, stainless steel restriction capillary, and blank nut	5067-6615
InfinityLab capillary kit, for 1260 Infinity II Bio-inert LC	Complete set of system capillaries, including Quick Connect fitting and UHP-FF fittings, PEEK finger-tight fittings, PEEK union, mounting tool for UHP-FF fittings, and blank nut	5067-6621

Pump kits

Starter kits

Description	Kit contents	Part no.
Pump start-up kit (400 bar)	Includes outlet cap, PTFE frits (5/pk), piston seals (4/pk), outlet gold seal, 20 µm glass solvent inlet filters (2/pk), cartridge for active inlet valve	G1311-68710

Preventive maintenance kits

Description	Kit contents	Part no.
Preventive maintenance kit, for 1260 Infinity LC isocratic or quaternary and 1220 pumps (600 bar)	Includes PTFE pump seals (2/pk), PTFE frits (5/pk), seal caps (2/pk), film washers (2/pk)	G1310-68741
Preventive maintenance kit, for 1260 Infinity LC binary pump (600 bar)	Includes PTFE pump seals (4/pk), PTFE frits (5/pk), seal caps (3/pk), film washers (4/pk)	G1312-68741
Extended preventive maintenance kit, for 1100/1050/1200 pumps	Includes piston seals (2/pk), PTFE frits (5/pk), cartridge active inlet valve, outlet ball valve, pistons (2/pk)	5065-4499
Preventive maintenance kit, for 1100/1200/1120 isocratic or quaternary pumps (400 bar)	Includes piston seals (2/pk), PTFE frits (5/pk), seal caps (2/pk)	G1310-68730
Preventive maintenance kit, for bio-inert quaternary pump (600 bar)	Includes bio-inert piston seal, PTFE frits (5/pk), seal cap assembly, film washer, peristaltic pump, silicone tubing, bio-inert wash seal	G5611-68741
Preventive maintenance kit, for 1100/1200 binary pump (400 bar)	Includes PTFE pump seals (4/pk), seal caps (3/pk), PTFE frits (5/pk), film washers (4/pk)	G1312-68730
Preventive maintenance kit, for 1100/1200 and 1260 Infinity LC preparative pump	Includes filter cup, seal prep flange (4/pk), filter assembly, peristaltic pump	G1361-68710
Preventive maintenance kit, for G1376A capillary pump	Includes pump seals (4/pk), stainless steel frit, seal cap assembly (4/pk)	G1376-68710
Preventive maintenance kit, for 1290 Infinity binary pumps*	Includes polyethylene pump seals (4/pk), PTFE frits (5/pk), seal cap assembly (4/pk)	G4220-68741
Seal wash preventive maintenance kit, for 1290 Infinity binary pumps*	Includes polyethylene wash seals (4/pk), film washers (4/pk), peristaltic pump	G4220-68742
Preventive maintenance kit, for 1290 Infinity quaternary pumps*	Includes polyethylene pump seals (2/pk), frit assembly, seal cap assembly, frit for inline filter, 0.3 µm (5/pk)	G4204-68741
Seal wash preventive maintenance kit, for 1290 Infinity quaternary pumps*	Includes polyethylene wash seals (2/pk), film washers (2/pk), peristaltic pump	G4204-68742
Preventive maintenance kit, for 1260 Infinity II flexible pump and 1290 Infinity II flexible pump with Long Life or Easy Maintenance pump heads	Including polyethylene pump seals (2/pk), wash seals (2/pk), peristaltic pump, inline filter frit (5/pk), frit assembly for outlet filter	G7104-68741
Preventive maintenance kit, for 1290 Infinity II binary pumps with Long Life and Easy Maintenance pump heads	Includes polyethylene pump seals (4/pk), wash seals (4/pk), seal cap assembly (2/pk), frit assembly, PTFE frits	G7120-68741

Instrument tool kits

Description	Kit contents	Part no.
1290 Infinity II LC tool kit	Includes hex key set, seal insert tool, hex driver slitted (3/pk), wrenches, plastic syringe, syringe adapter, blanking nut	G7120-68708
Compact tool kit	Includes tool for 1/8 nut, seal insert tool, wrench 0.25 inch to 0.31 inch, open wrench 14 mm, hex key (2.5 mm, 4 mm), 9/64 inch, wrench 0.50 inch to 0.56 inch	G4296-68715
1290 Infinity pump service kit	Includes pump seal exchange tool, torque wrench, hex bit (2.5 mm, 4 mm), 19 mm open wrench, torx bit 10 x 25 mm, adapter 0.25 inch square to hex	5067-4699
1290 Infinity pump service kit, for pumps with Long Life and Easy Maintenance pump heads	Includes torque wrench, torx bit 10 x 25 mm, adapter 0.25 inch square to hex, pump head holder, seal handling device, wrench 0.25 inch to 0.31 inch, abrasive paper	5067-6652
Active seal wash kit	Includes 2 wash seal gaskets, 2 pump seals, peristaltic pump (includes pump cassette and motor), 2 seal keepers, 2 support ring assemblies, seal insert tool, silicone tubing	G1311-68711

*Tool kit 5067-4699 required for servicing 1290 Infinity pump heads (except pumps equipped with Long Life or Easy Maintenance pump heads).

Autosampler kits

Starter kits

Description	Kit contents	Part no.
Start-up kit for G1313A, G1329A autosamplers	Includes Vespel rotor seal, needle seat, needle, metering seals (2/pk), and finger caps (15/pk)	G1313-68709

Preventive maintenance kits

Description	Kit contents	Part no.
For G1329B autosampler	Includes PEEK rotor seal, needle, seat assembly, seal for metering piston	G1313-68719
For G7129A vialsampler	Includes needle assembly, needle seat assembly, PEEK rotor seal, finger caps (15/pk)	G7129-68740
For G1313A, G1329A samplers	Includes Vespel rotor seal, needle seat, needle	G1313-68730
Extended kit for G1313A, G1329A autosamplers	Includes Vespel rotor seal, needle seat, needle, isolation seal, stator face	5065-4498
For G1367A/B autosamplers	Includes needle assembly, needle seat, peristaltic pump, Vespel rotor seal, seal-tight nut (loop fitting)	G1367-68730
For G1367C/D sampler	Includes needle assembly, needle seat, peristaltic pump, PEEK rotor seal, seal-tight nut (loop fitting)	G1367-68734
For G1367E autosampler	Includes needle assembly, needle seat, peristaltic pump, PEEK rotor seal	G1367-68741
For G4277A/G4278A/G4270-CTC/G4271-CTC (all PAL) samplers	Includes tension cord for injection unit, needle seal, and lubrication kit	G6500-88088
For G4226A sampler	Includes needle assembly, needle seat, peristaltic pump, Vespel rotor seal	G4226-68735
For G7129B vialsampler	Includes needle assembly, needle seat assembly, Vespel rotor seal, finger caps (15/pk)	G7129-68730
For G7167B multisampler standard	Includes needle assembly, high pressure needle seat, PEEK rotor seal	G7167-68710
For G7167B multisampler dual needle	Includes needle assembly (2/pk), high pressure needle seat (2/pk), PEEK rotor seal, rotor seal injection valve	G7167-68720
For G7167A multisampler standard	Includes needle assembly, high pressure needle seat, PEEK rotor seal	G7167-68730
For G5668A bio-inert multisampler	Includes needle assembly, high pressure needle seat, PEEK rotor seal	G5668-68730

Detector maintenance kits

Variable wavelength detector (VWD)

Description	Kit contents	Part no.
High-pressure flow cell kit	Includes windows (2/pk), Kapton gaskets (2/pk), PEEK rings (2/pk)	G1314-65054
Micro flow cell kit	Includes windows (2/pk), gaskets #1 (2/pk), gaskets #2 (2/pk)	G1314-65052
Semi-micro flow cell kit	Includes windows (2/pk), gaskets: standard #1 (2/pk), semi-micro #1, semi-micro #2	G1314-65056
Standard flow cell kit (flow cell G1314-60080)	Includes windows (2/pk), gaskets #1 (2/pk), gaskets #2 (2/pk)	G1314-65050
Standard flow cell kit (flow cells G1314-60086, G1314-60186)	Includes windows (2/pk), gaskets #1 (2/pk), gaskets #2 (2/pk)	G1314-65061
Cell screw kit	Includes window holders assembled with windows and washers (2/pk)	79883-68703
Cell screws		G1314-65062

Diode array detector (DAD)/multiple wavelength detector (MWD)

Description	Kit contents	Part no.
Inline pressure relief valve kit, for G4220A, G4220B	Includes pressure relief valve, fittings, tubing, and instructions	G4212-68001
Cell repair kit, standard cell, for G1315A/B, G1365A/B, G1315C/D, G1365C/D, G7115A	Includes window screw kit, 4 mm hexagonal wrench, seal kit	G1315-68712
Cell repair kit, semi-micro cell, for G1315A/B, G1365A/B, G1315C/D, G1365C/D, G7115A	Includes window screw kit, 4 mm hexagonal wrench, seal kits	G1315-68713
High-pressure cell repair kit, for G1315A/B, G1365A/B, G1315C/D, G1365C/D, G7115A	Includes quartz window, spring washers (5/pk), seal rings (2/pk)	79883-68700

Detector lamps

Description	Used in	Part no.
Variable Wavelength Detector		
InfinityLab long-life HiS deuterium lamp with RFID tag	For G1314D/E/F and G7114A/B	G1314-60101
Long-life deuterium lamp	For G1314A/B/C, 1120 and 1220 Infinity LC with VWD	G1314-60100
Diode Array Detector/Multiple Wavelength Detector		
InfinityLab long-life HiS deuterium lamp (8pin), with RFID tag	For G4212A/B and G7117A/B/C	5190-0917
InfinityLab long-life deuterium lamp, with RFID tag	For G1315C/D, G1365C/D, G7115A, G7165A	2140-0820
Long-life deuterium lamp	For G1315A/B and G1365A/B	5182-1530
Tungsten lamp (for VIS) assembly	For G1315A/B/C/D and G1365A/B/C/D	G1103-60001

Legacy system kits

Stay-Fit kits for 1100 Series systems

Description	Kit contents	Part no.
1100 Quat/ALS Stay-Fit maintenance pack	Piston seals (2/pk), PTFE frits (5/pk), seal caps (2/pk), rotor seal (Vespel), ALS needle, ALS seat capillary, glass filter solvent inlet (4/pk), frit adapter solvent inlet (4/pk)	01100-68000
1100 Quat/ALS/VWD Stay-Fit maintenance pack	Piston seals (2/pk), PTFE frits (5/pk), seal caps (2/pk), rotor seal (Vespel), ALS needle, ALS seat capillary, glass filter solvent inlet (4/pk), frit adapter solvent inlet (4/pk), D2 Lamp	01100-68001
1100 Bin/ALS Stay-Fit maintenance pack	Piston seals (4/pk), PTFE frits (5/pk), seal caps (3/pk), rotor seal (Vespel), sieves for outlet valve, ALS needle, ALS seat capillary, glass filter solvent inlet (4/pk), frit adapter solvent inlet (4/pk)	01100-68002
1100 Bin/ALS/DAD Stay-Fit maintenance pack	Piston seals (4/pk), PTFE frits (5/pk), seal caps (3/pk), sieves for outlet valve, rotor seal (Vespel), ALS needle, ALS seat capillary, glass filter solvent inlet (4/pk), frit adapter solvent inlet (4/pk), long-life deuterium lamp	01100-68003
1100 Quat/WPS Stay-Fit maintenance pack	Piston seals (2/pk), PTFE frits (5/pk), seal caps (2/pk), rotor seal (Vespel), WPS needle, WPS seat capillary, peristaltic pump, nut seal-tight fitting for loop capillary, glass filter solvent inlet (4/pk), frit adapter solvent inlet (4/pk)	01100-68004
1100 Quat/WPS/VWD Stay-Fit maintenance pack	Piston seals (2/pk), PTFE frits (5/pk), seal caps (2/pk), rotor seal (Vespel), WPS needle, WPS seat capillary, peristaltic pump, nut seal-tight fitting for loop capillary, glass filter solvent inlet (4/pk), frit adapter solvent inlet (4/pk), D2 lamp	01100-68005
1100 Bin/WPS Stay-Fit maintenance pack	Piston seals (4/pk), PTFE frits (5/pk), seal caps (3/pk), sieves for outlet valve, rotor seal (Vespel), WPS needle, WPS seat capillary, peristaltic pump, nut seal-tight fitting for loop capillary, glass filter solvent inlet (4/pk), frit adapter solvent inlet (4/pk), D2 lamp	01100-68006
1100 Bin/WPS/DAD Stay-Fit maintenance pack	Piston seals (4/pk), PTFE frits (5/pk), seal caps (3/pk), sieves for outlet valve, rotor seal (Vespel), WPS needle, WPS seat capillary, peristaltic pump, nut seal-tight fitting for loop capillary, glass filter solvent inlet (4/pk), frit adapter solvent inlet (4/pk), long-life deuterium lamp	01100-68007

Preventive maintenance kits for 1120/1220 Series systems

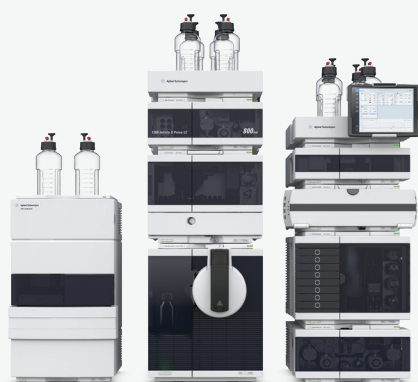
Description	Kit contents	Part no.
Preventive maintenance kit, for 1220 Infinity LC, automated injector systems	Includes piston seals (2/pk), PTFE frits (5/pk), Vespel rotor seal, needle, needle seat, seal cap assembly (2/pk)	G4280-68730
Preventive maintenance kit, for 1120 manual injector systems	Includes piston seals (2/pk), PTFE frits (5/pk), PEEK rotor seal, seal cap assembly (2/pk)	G4280-68710
Preventive maintenance kit, for 1220 automated injector systems	Includes piston seals (2/pk), PTFE frits, rotor seal, seal cap assembly (2/pk), needle, and needle seat	G4280-68770
Preventive maintenance kit, for 1220 manual injector systems	Includes piston seals (2/pk), PTFE frits, rotor seal, and seal cap assembly (2/pk)	G4280-68750

Agilent InfinityLab

Agilent InfinityLab is designed to provide you with the highest efficiency in your LC and LC/MSD workflows—regardless of application area. InfinityLab is an optimized portfolio of LC instruments, mass selective detectors, columns, and supplies designed to work together in perfect harmony.

Combined with Agilent OpenLab software and Agilent CrossLab services, Agilent provides you with end-to-end solutions and support to make every day more productive.

Learn more at: www.agilent.com/chem/infinitylab



Agilent 1220
Infinity II LC

Agilent 1260
Infinity II LC

Agilent 1290
Infinity II LC

InfinityLab LC Series

From routine analysis to cutting-edge research, the Agilent InfinityLab LC Series provides the broadest portfolio of LC systems and solutions for any application and budget to achieve highest efficiency.

Affordable efficiency

The Agilent 1220 Infinity II LC is an affordable, high-quality integrated LC system, putting you on the fast track to efficiency.

Everyday efficiency in every way

The Agilent 1260 Infinity II LC is the trusted platform with the broadest instrument choice, taking you to the next level of efficiency.

The benchmark in efficiency

The Agilent 1290 Infinity II LC embodies the next generation of LC, giving you the ultra-high performance to achieve maximum efficiency.



InfinityLab supplies

Agilent InfinityLab supplies are a range of innovative consumables designed and manufactured to optimize your liquid chromatography and mass selective detection workflows, making your everyday tasks more efficient. From maintaining your LC system, to controlling harmful solvent fumes, innovative InfinityLab supplies are designed to solve everyday laboratory challenges, enabling you to work more efficiently, leaving you with more time and less frustration.



Agilent InfinityLab Poroshell 120 columns

Advance throughput and resolution for more analytes than ever with Agilent InfinityLab Poroshell 120 columns. The InfinityLab Poroshell 120 family includes new phases for chiral and HILIC separations. Whether you use traditional HPLC systems or newer UHPLC systems, you will experience exceptional separation efficiency, and significantly boost performance and throughput from every LC in your lab.

www.agilent.com/chem/discoverporoshell

Learn more:

www.agilent.com/chem/infinitylab-supplies-catalog

Buy online:

www.agilent.com/chem/store

U.S. and Canada

1-800-227-9770

agilent_inquiries@agilent.com

Europe

info_agilent@agilent.com

Asia Pacific

inquiry_lsca@agilent.com

Agilent
CrossLab

A proven investment in your lab's productivity

Agilent CrossLab preventive maintenance services prevent problems before they lead to downtime. 60% of instrument failures can be traced to a single cause - lack of preventive maintenance. In fact, timely maintenance can save 2.4 days of downtime for the typical lab. Scheduling regular preventive maintenance services, performed by certified engineers, maximizes uptime, extends the useful life of your instruments, and increases the accuracy of your results.

Learn how Agilent CrossLab preventive maintenance can keep your lab's instrumentation operating at maximum productivity and efficiency.

www.agilent.com/chem/crosslab

This information is subject to change without notice.

© Agilent Technologies, Inc. 2018
Printed in the USA, July 1, 2018
5994-0017EN

 **Agilent**
Trusted Answers