

# MetaboAuto<sup>®</sup> - Automated Sample Preparation Platform for on-line GC-MS Metabolomics

**METABO** **AUTO**<sup>®</sup>

# Automated Sample Preparation Platform for on-line GC/MS Metabolomics (MetaboAuto®)

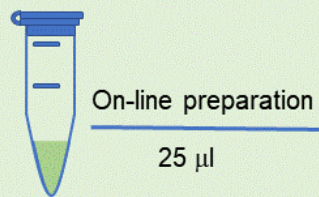
## GC-MS Application Note



**METABO** AUTO®

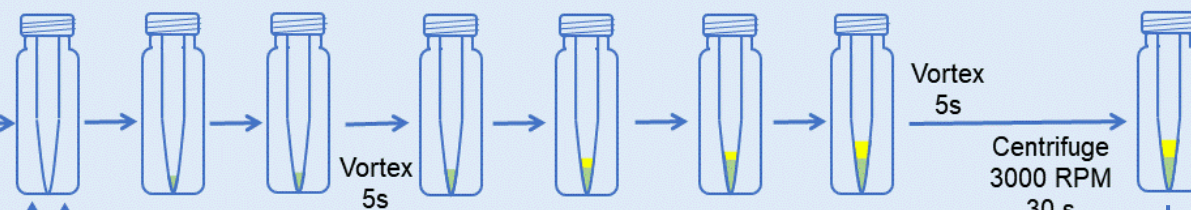
- Metabolite coverage: amino acids, organic acids, small peptides, biogenic amines
- The developed sample preparation workflow involves immediate, in-situ derivatization with ethyl chloroformate in an aqueous biological matrix.
- The derivatized metabolites concomitantly migrate into an immiscible organic phase (simultaneous derivatization + liquid liquid microextraction workflow).
- Automated Qual/Quan utility for the Thermo Scientific (Xcalibur, TraceFinder) data processing software
- Automated sample preparation in stand-alone or on-line regime integrated with the autosampler function.

## Urine

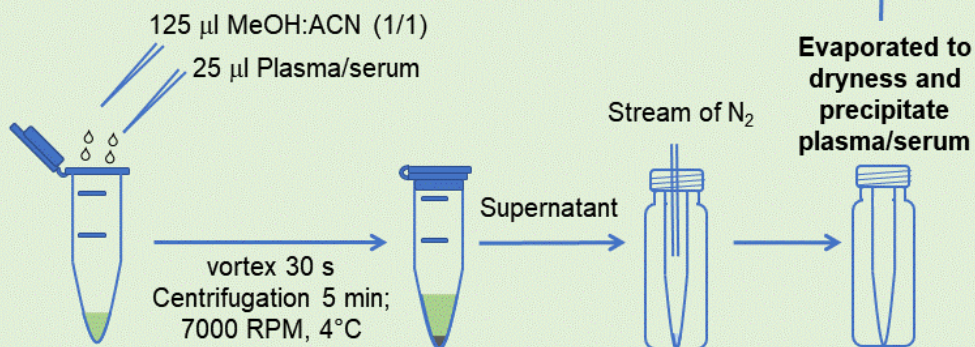


## Automated on-line sample preparation with MetaboAuto<sup>®</sup>

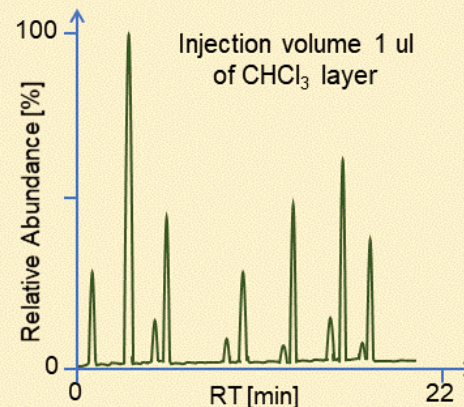
25  $\mu$ l IS  
25  $\mu$ l Buffer  
25  $\mu$ l Catalyst  
25  $\mu$ l Reagent  
25  $\mu$ l Buffer 2  
25  $\mu$ l Reagent 2



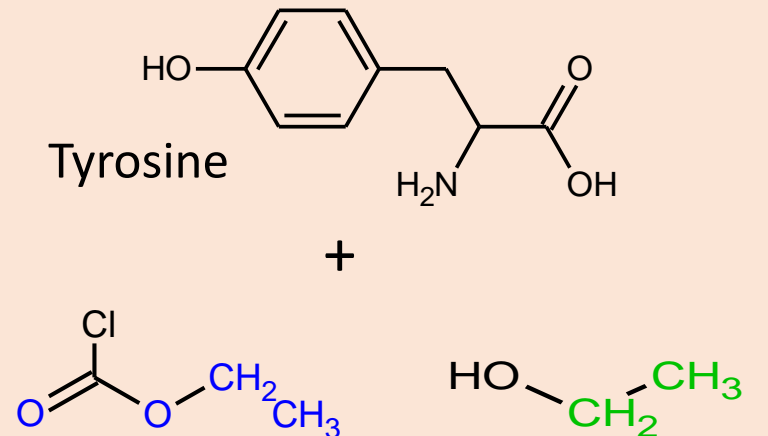
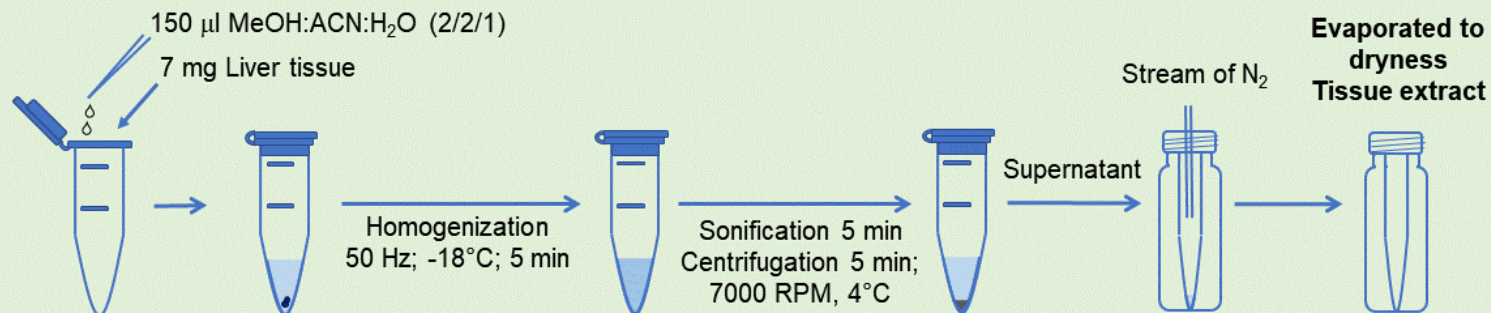
## Off-line plasma/serum precipitation



## GC/MS Analysis



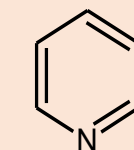
## Preliminary off-line liver tissue extraction



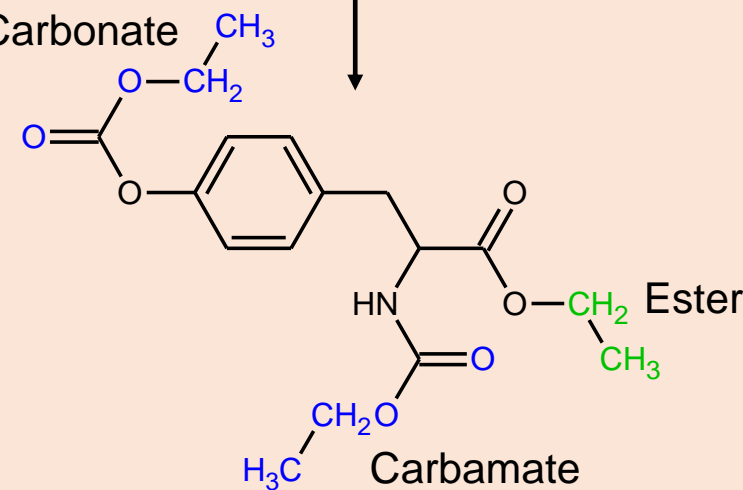
Ethyl Chloroformiate

Ethanol

25°C;  
 $\leq$  5 s

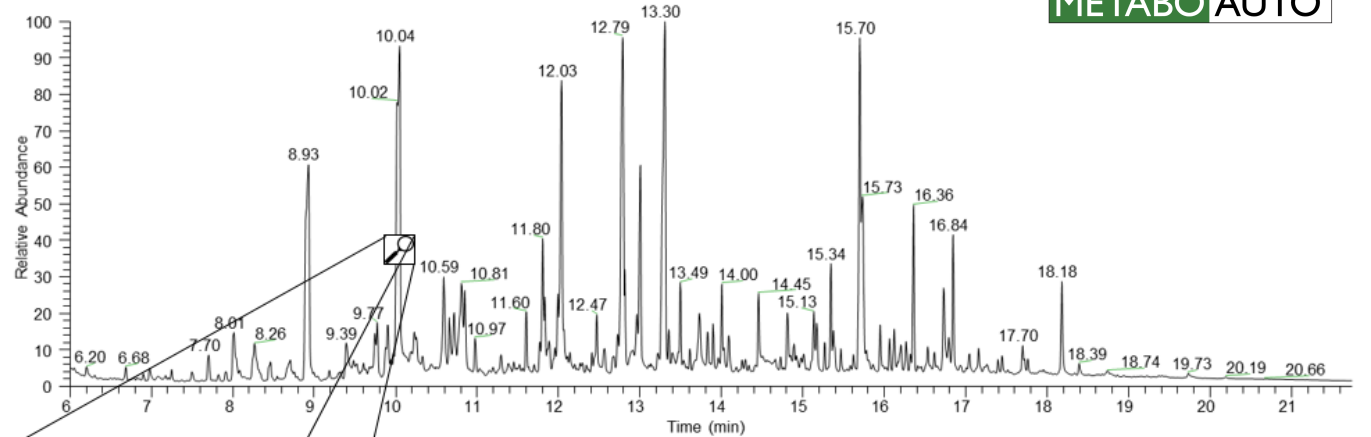
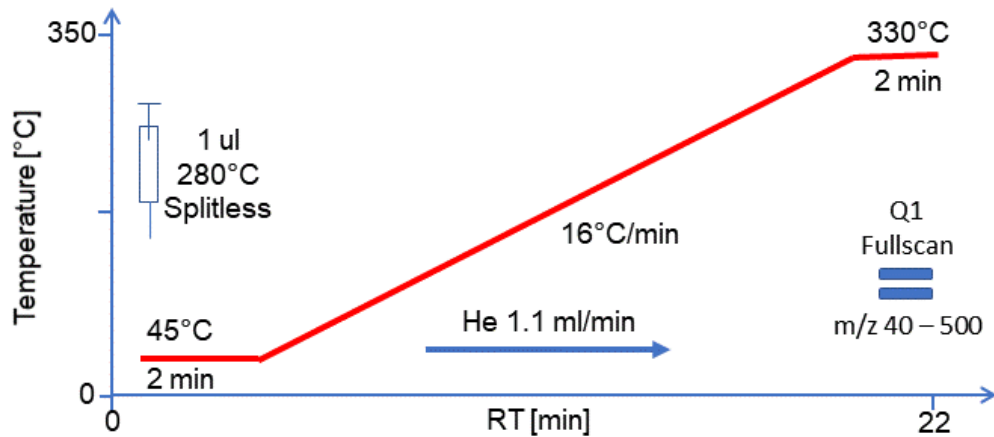


Carbonate

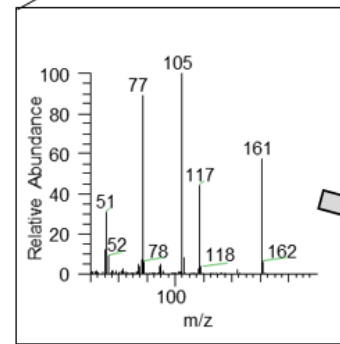


# MetaboAuto<sup>®</sup> EI spectral library

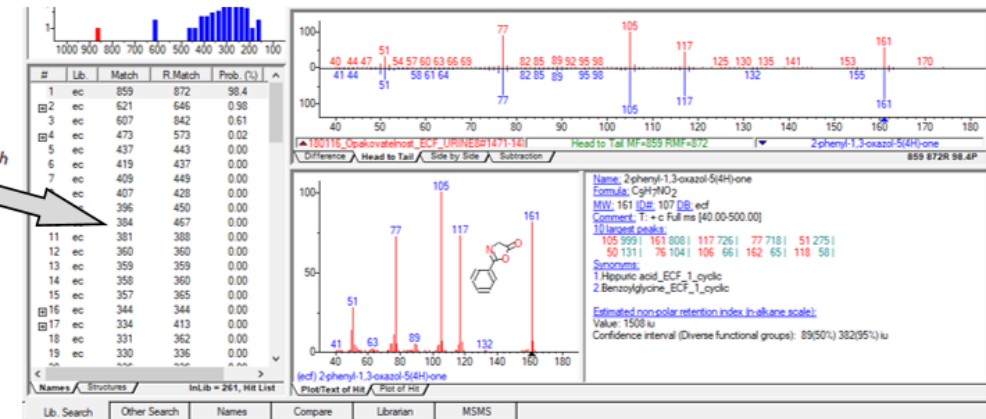
METABO AUTO<sup>®</sup>



Metabolite library containing EI mass spectra of > 250 protic metabolite derivatives and their structures that can be uploaded into the NIST<sup>®</sup> mass spectral library.

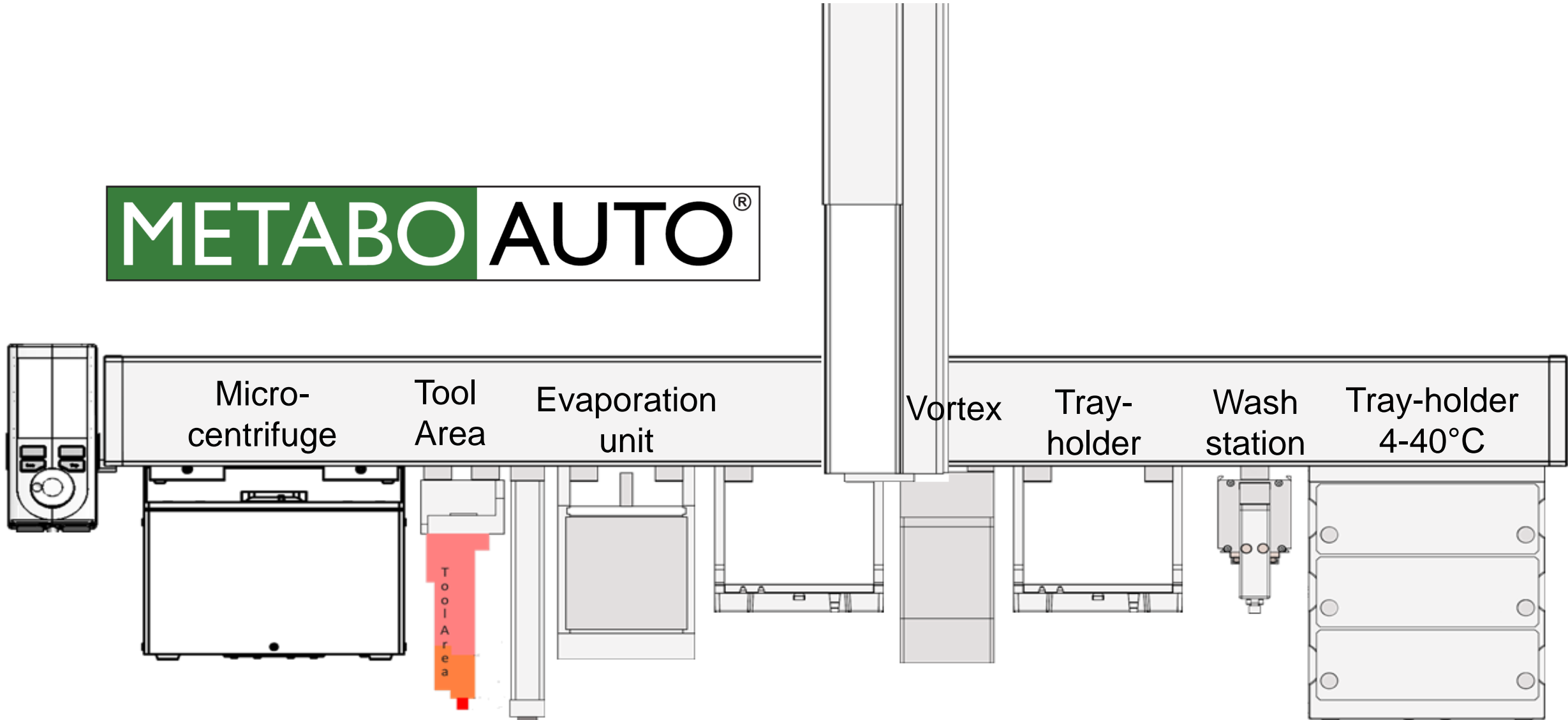


NIST MS Search

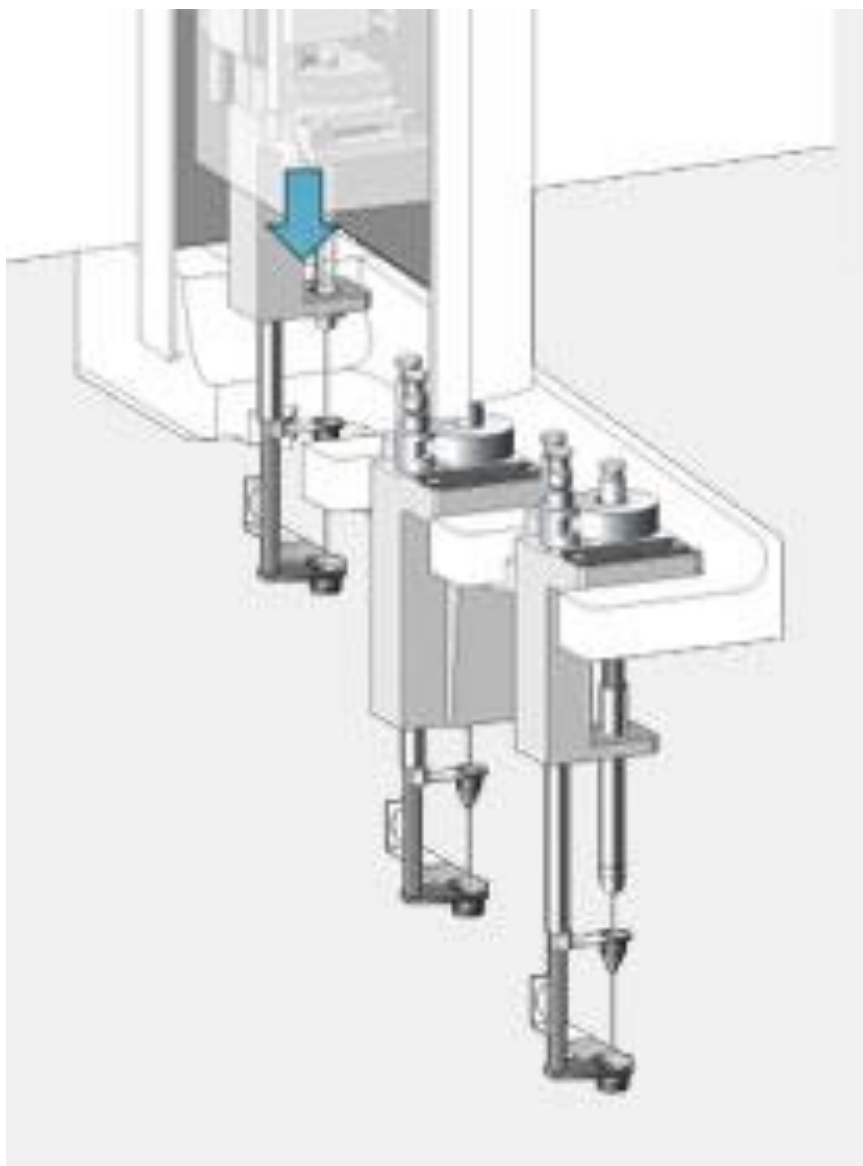


# RTC modular platform

**METABO** AUTO<sup>®</sup>



# Robotic Tool Change



## Liquid Syringe Tools

57mm or 85mm

1.2 $\mu$ L / 5 $\mu$ L / 10 $\mu$ L / 100 $\mu$ L /  
250 $\mu$ L / 500 $\mu$ L / 1 mL / 10 mL



## LC-MS Tool



## Headspace Tools

Syringe temp. 40°C up  
to 150°C in 1°C steps



## Pipette Tool

200 $\mu$ L or 1000 $\mu$ L  
tips



## SPME Arrow Tool

SPME Fibers sorbents:  
PDMS, DVB, PA, Carbon  
WR, PDMS/Carbon WR,  
PDMS/Carbon WR/DVB



## ITEX Dynamic Headspace Tool

Tenax TA trap  
Temperature  
range: 40 - 350°C



# Centrifuge

Protein precipitation  
Phase separation



Relative centrifugal force

2000 x g with Centrifuge Combi  
5000 x g with Centrifuge 2 mL

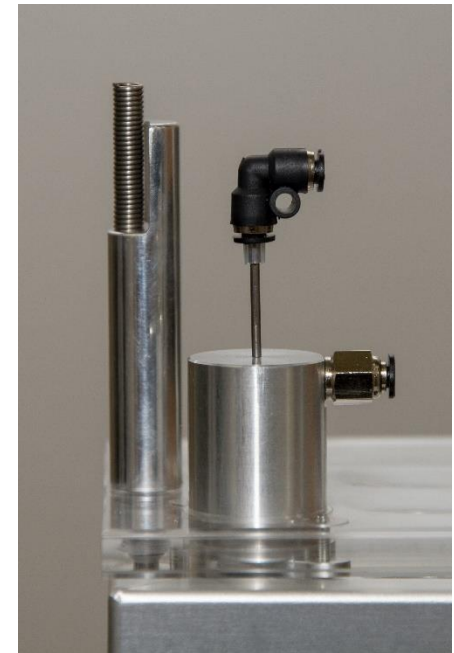
Centrifuge Combi: 2 mL (6x) + 10 mL / 20 mL (2x)  
Centrifuge: 2 mL (8x)

# Evaporation unit N<sub>2</sub> Needel



N<sub>2</sub> or He, Ar, Air

2 mL; 10 mL / 20 mL  
(30-80°C)

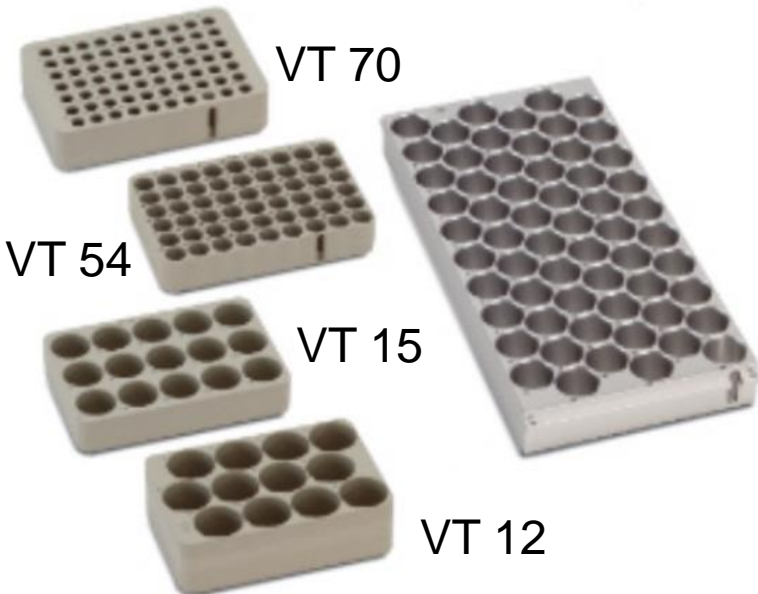


# Sample Storage

## Room Temperature Storage Tray Holder



- 3x MTP (Multi Titer Plate)
- 3x DW (Deep Well Plate)
- 3x VT12 (12 x 40ml)
- 3x VT15 (15 x 10/20ml)
- 3x VT54 (54 x 2ml)
- 3x VT70 (70 x 1ml)
- 1x R60 (60 x 10/20ml)



Deep 96-Well Plate

## Temperature Controlled Storage Peltier Stack 4°C- 40°C



- 2x MTP (Multi Titer Plate)
- 2x DW (Deep Well Plate)
- 2x VT12 (12 x 40ml)
- 2x VT15 (15 x 10mL)
- 2x VT54 (54 x 2mL)
- 2x VT70 (70 x 1mL)



- 6x MTP (Multi Titer Plate)
- 6x DW (Deep Well Plate)
- 6x VT12 (12 x 40ml)
- 6x VT15 (15 x 10mL)
- 6x VT54 (54 x 2mL)
- 6x VT70 (70 x 1mL)



# Mixing Modules

## Vortex

Room Temperature

Agitation speed  
0 - 2000rpm

Optional adapter for  
2mL, 10mL or 20mL vials

## Agitator

Temperature range  
30° - 200°C

Agitation speed  
250 - 750rpm

Optional adapter for  
2mL or 10mL vials

# Wash Modules

## Fast Wash Module

Two different wash  
solvents (e.g. aqueous and  
organic)

Integrated pumps - active  
wash solvent delivery

## Large Wash Module

2x Wash Vials  
100ml  
1x Waste Port

## Standard Wash Module

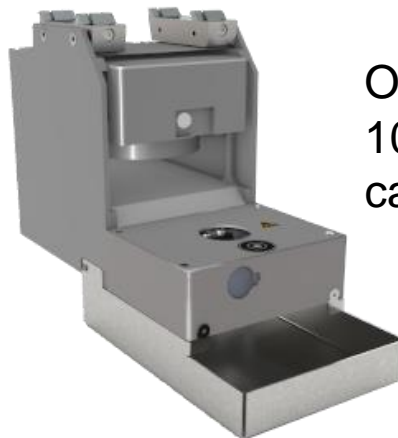
4x Wash Vials 10mL  
1x Waste Vial 10mL

# Other modules available for the RTC platform

**Barcode Reader Module**



**DeCapper Module**



Opens/Closes 2,  
10, 20 mL screw  
cap vials

**Valve Drive Module**



Sample injection,  
Column switching  
online LC-LC-MS  
or SPE-LC-MS

**SPME Arrow Conditioning Module**



Conditioning of SPME  
Arrow and SPME fibers,  
max. 350°C

**Heatex Stirrer Module**



For powerful mixing and  
heating in sample prep.  
and SPME Arrow

Temperature 30° - 150°C  
Stirring speed 1600 rpm  
20mL vials

**Dilutor**



For efficient  
and accurate  
addition of  
larger  
amounts of  
liquids.

