

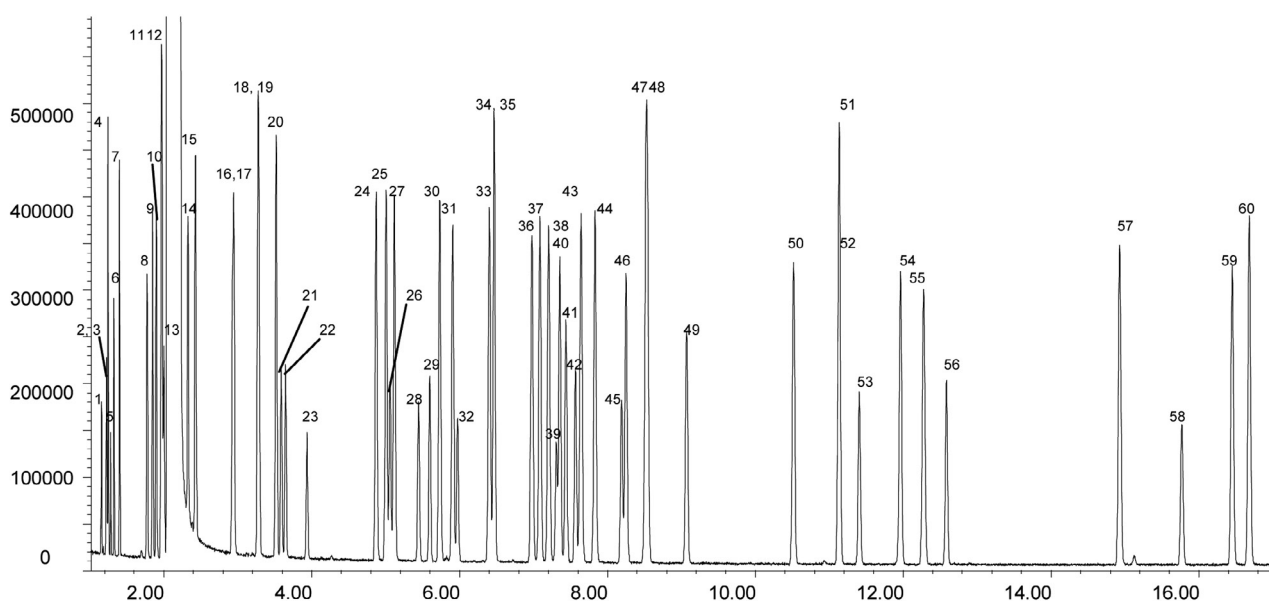
Analysis of USEPA 502.2 mix

SolGel-WAX™

Column part number	054796		
Phase	SolGel-WAX™	Carrier gas flow	1.8 mL/min
Column	30 m x 0.25 mm x 0.25 µm	Constant flow	On
Sample	200 ppm in methanol	Average linear velocity	35 cm/sec at 40°C
Initial temperature	40°C, 1 min	Injection mode	Split (100:1)
Rate 1	6°C/min to 210°C	Injection volume	1 µL
Rate 2	15°C/min to 260°C	Injection temperature	250°C
Final temperature	260°C, 5 min	Autosampler	No
Detector	MS	Full scan / SIM	Full scan 45-450
Carrier gas	He, 25.7 psi		

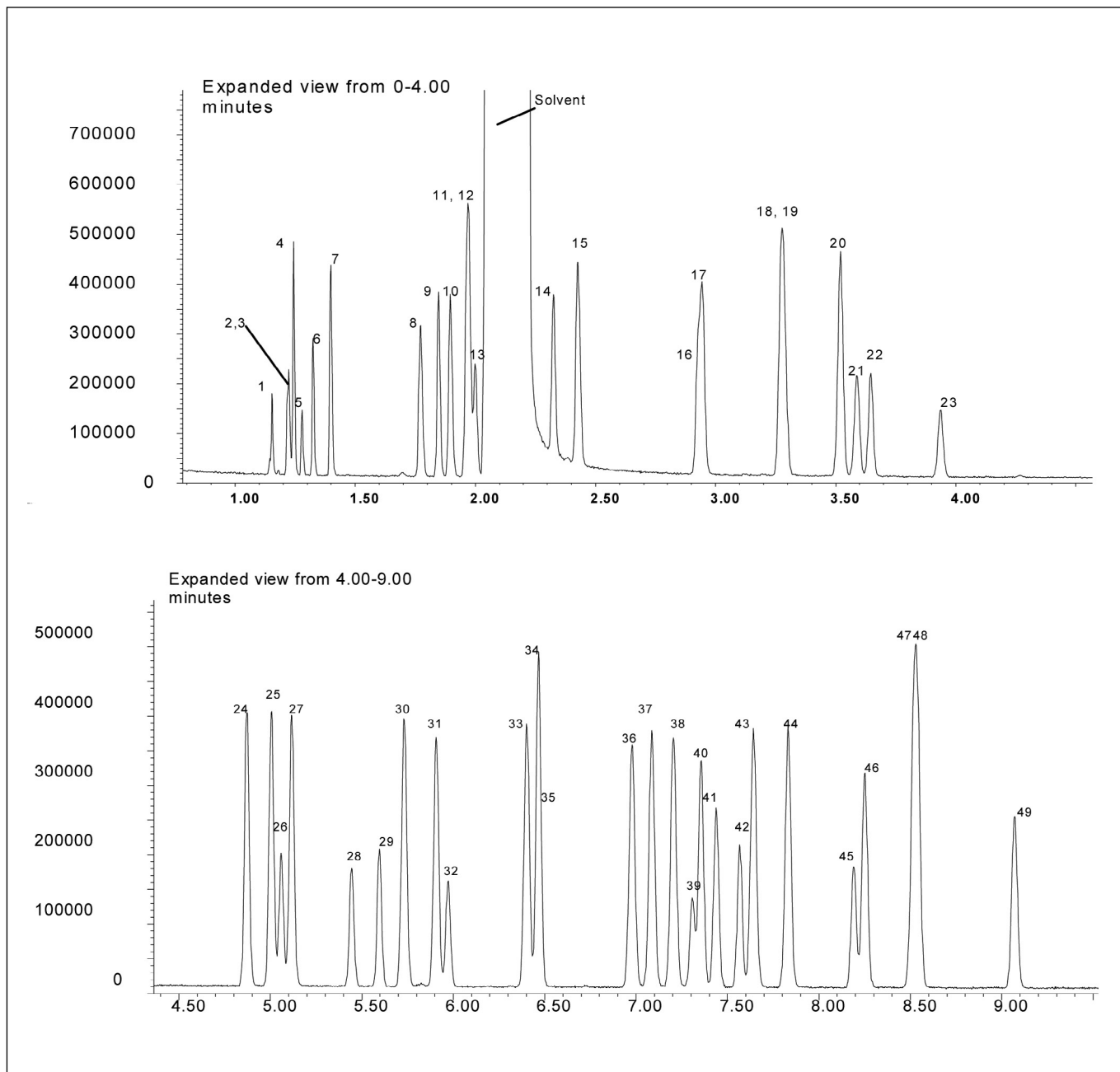
Components

1. Dichlorodifluoromethane	16. 1,2-Dichloroethene (trans)	31. Isopropyl benzene	46. 2-Chlorotoluene
2. Chloromethane	17. Trichloroethene	32. 1,3-Dichloropropane	47. n-Butylbenzene
3. Chloroethene	18. Tetrachloroethene	33. n-Propylbenzene	48. 4-Chlorotoluene
4. Trichlorofluoromethane	19. Chloroform	34. Chlorobenzene	49. Bromobenzene
5. Chloroethane	20. Toluene	35. 1,3-Dichloro-1-propene (trans)	50. 1,4-Dichlorobenzene
6. Bromomethane	21. 1,2-Dichloropropane	36. t-Butylbenzene	51. 1,3-Dichlorobenzene
7. 1,1-Dichloroethene	22. Bromochloromethane	37. 1,2,4-Trimethylbenzene	52. Bromoform
8. 2,2-Dichloropropane	23. 1,2-Dichloroethane	38. sec-Butylbenzene	53. 1,2,3-Trichloropropane
9. 1,2-Dichloroethene (cis)	24. Ethylbenzene	39. 1,2-Dibromoethane	54. 1,2-Dichlorobenzene
10. 1,1-Dichloro-1-propene	25. p-Xylene	40. Styrene	55. Hexachlorobutadiene
11. 1,1,1-Trichloroethane	26. 1,3-Dichloro-1-propene (cis)	41. 1,1,1,2-Tetrachloroethane	56. 1,1,2,2-Tetrachloroethane
12. Carbon tetrachloride	27. m-Xylene	42. 1,1,2-Trichloroethane	57. 1,2,4-Trichlorobenzene
13. 1,1-Dichloroethane	28. o-Xylene	43. 4-Isopropyltoluene	58. 1,2-Dibromo-3-chloropropane
14. Dichloromethane	29. Bromodichloromethane	44. 1,3,5-Trimethylbenzene	59. 1,2,3-Trichlorobenzene
15. Benzene	30. Dibromomethane	45. Dibromochloromethane	60. Naphthalene



Analysis of USEPA 502.2 mix

SolGel-WAX™



For more information visit www.trajanscimed.com or contact techsupport@trajanscimed.com