

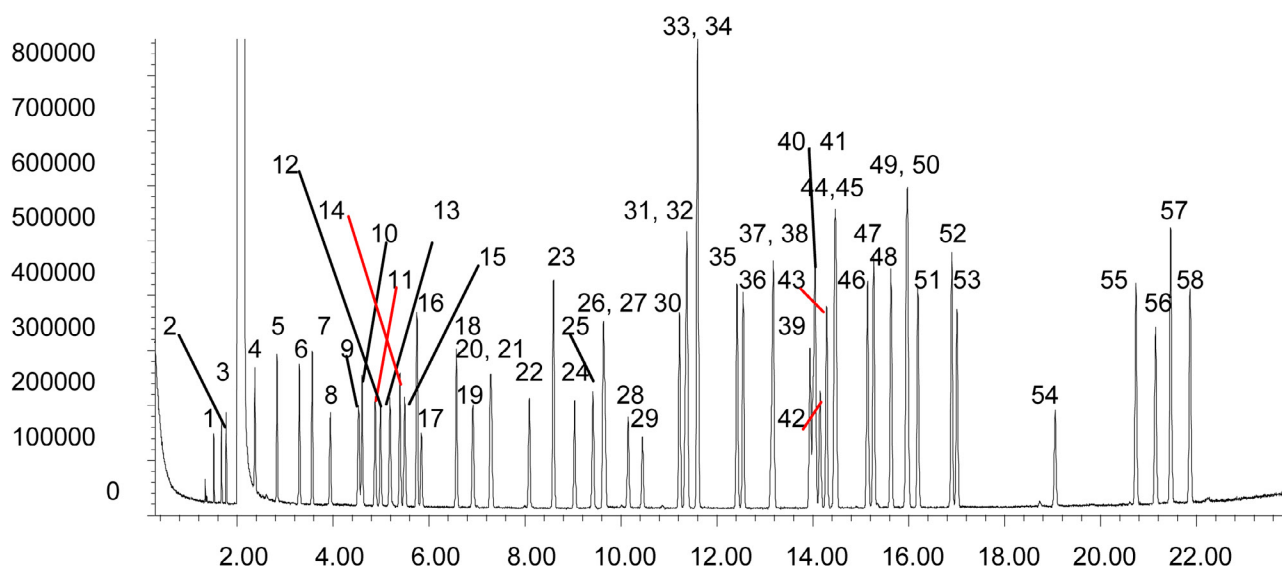
Analysis of USEPA 502.2 mix

BP624

Column part number	054827		
Phase	BP624	Carrier gas	He, 25.7 psi
Column	30 m x 0.22 mm x 1.2 µm	Carrier gas flow	1.8 mL/min
Sample	200 ppm in methanol	Constant flow	On
Initial temperature	40°C, 1 min	Average linear velocity	35 cm/sec at 40°C
Rate 1	6°C/min to 210°C	Injection mode	Split (100:1)
Rate 2	15°C/min to 260°C	Injection volume	1 µL
Final temperature	260°C, 5 min	Injection temperature	250°C
Detector	MS	Autosampler	No

Components

1. Dichlorodifluoromethane	16. Benzene	31. 1,1,1,2-Tetrachloroethane	46. tert-Butylbenzene
2. Chloromethane	17. 1,2-Dichloroethane	32. Ethyl benzene	47. 1,2,4-Trimethylbenzene
3. Vinyl chloride	18. Trichloroethene	33. p-Xylene	48. sec-Butylbenzene
4. Trichlorofluoromethane	19. 1,2-Dichloropropane	34. m-Xylene	49. 1,3-Dichlorobenzene
5. 1,1-Dichloroethane	20. Dibromomethane	35. o-Xylene	50. Isopropyltoluene
6. Dichloromethane	21. Bromodichloromethane	36. Styrene	51. 1,4-Dichlorobenzene
7. trans-1,2-Dichloroethene	22. cis-1,3-Dichloropropene	37. Bromoform	52. n-Butylbenzene
8. 1,1-Dichloroethane	23. Toluene	38. Isopropylbenzene	53. 1,2-Dichlorobenzene
9. 2,2-Dichloropropane	24. trans-1,3-Dichloropropene	39. Bromobenzene	54. 1,2-Dibromo-3-chloropropane
10. cis-1,2-Dichloroethene	25. 1,1,2-Trichloroethane	40. 1,1,2,2-Tetrachloroethane	55. 1,2,4-Trichlorobenzene
11. Chloroform	26. Tetrachloroethene	41. n-Propyl benzene	56. Hexachlorobutadiene
12. Bromochloromethane	27. 1-Chloro-1-propene	42. 1,2,3-Trichloropropane	57. Naphthalene
13. 1,1,1-Trichloroethane	28. Dibromochloromethane	43. 2-Chlorotoluene	58. 1,2,3-Trichlorobenzene
14. 1,1-Dichloropropene	29. 1,2-Dibromoethane	44. 1,2,3-Trimethylbenzene	
15. Carbon tetrachloride	30. Chlorobenzene	45. 4-Chlorotoluene	


 For more information visit www.trajanscimed.com or contact techsupport@trajanscimed.com