

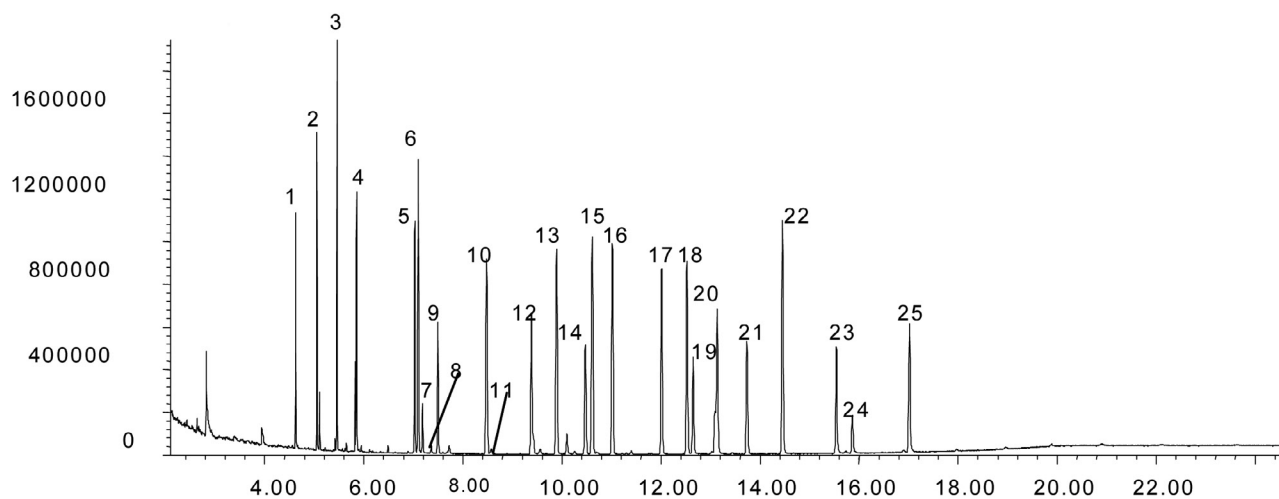
## Analysis of organophosphorous pesticides (USEPA 8141)

SolGel-1ms™

<b>Column part number</b>	<b>054795</b>		
Phase	SolGel-1ms™	Constant flow	On
Column	30 m x 0.25 mm x 0.25 µm	Average linear velocity	35 cm/sec at 50°C
Sample	100 ppm in dichloromethane	Injection mode	Splitless
Initial temperature	50°C, 1 min	Purge on time	0.5 min
Rate 1	30°C/min to 190°C, 3 min	Purge on flow	60mL/min
Rate 2	10°C/min to 300°C	Injection volume	1 µL
Final temperature	300°C, 5 min	Injection temperature	250°C
Detector	MS	Autosampler	No
Carrier gas	He, 26.6 psi	Liner type	4 mm ID Single Taper
Carrier gas flow	1.8 mL/min	Full scan / SIM	Full scan 45-450

**Components**

- |                                     |                      |                                 |                         |
|-------------------------------------|----------------------|---------------------------------|-------------------------|
| 1. 4-Chloro-3-nitrobenzotrifluoride | 8. Sulfotepp         | 15. Chlorpyrifos                | 22. Triphenyl phosphate |
| 2. Dichlorvos                       | 9. Phorate           | 16. Trichlorinate               | 23. Guthion             |
| 3. 1-Bromo-2-nitrobenzene           | 10. Diazinon         | 17. Tetrachlorvinphos           | 24. Unknown             |
| 4. α-Mevinphos                      | 11. Disulfoton       | 18. Tokuthion                   | 25. Coumaphos           |
| 5. Ethoprop                         | 12. Methyl parathion | 19. Tributylphosphorotrithioate |                         |
| 6. Tri-n-Butyl phosphate            | 13. Ronnel           | 20. Fensulfothion               |                         |
| 7. Naled                            | 14. Fenthion         | 21. Impurity                    |                         |


 For more information visit [www.trajanscimed.com](http://www.trajanscimed.com) or contact [techsupport@trajanscimed.com](mailto:techsupport@trajanscimed.com)