

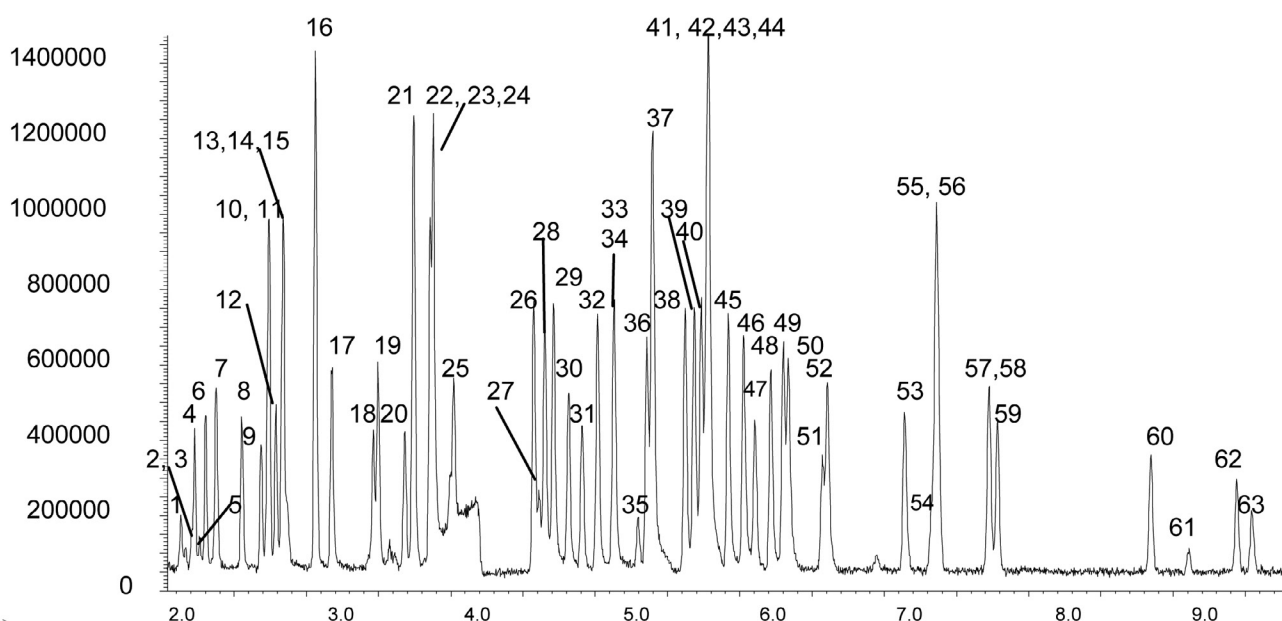
Analysis of USEPA 502.2 mix

SolGel-WAX™

Column part number	054796		
Phase	SolGel-WAX™	Tekmar 200/2016 purge and trap	Vocarb Trap
Column	30 m x 0.25 mm x 1.0 µm	Carrier gas	He, 5 psi
Sample	200 ng volatiles mix (Cerilliant)	Constant flow	Off
Initial temperature	50°C, 0.5 min	Average linear velocity	32 cm/sec at 50°C
Rate 1	12°C/min to 70°C	Injection mode	Split (30:1)
Rate 2	20°C/min to 215°C	Injection temperature	150° C
Detector	MS	Liner type	4 mm ID FocusLiner
Final temperature	215°C, 0 min	Full scan / SIM	Full scan 35-250

Components

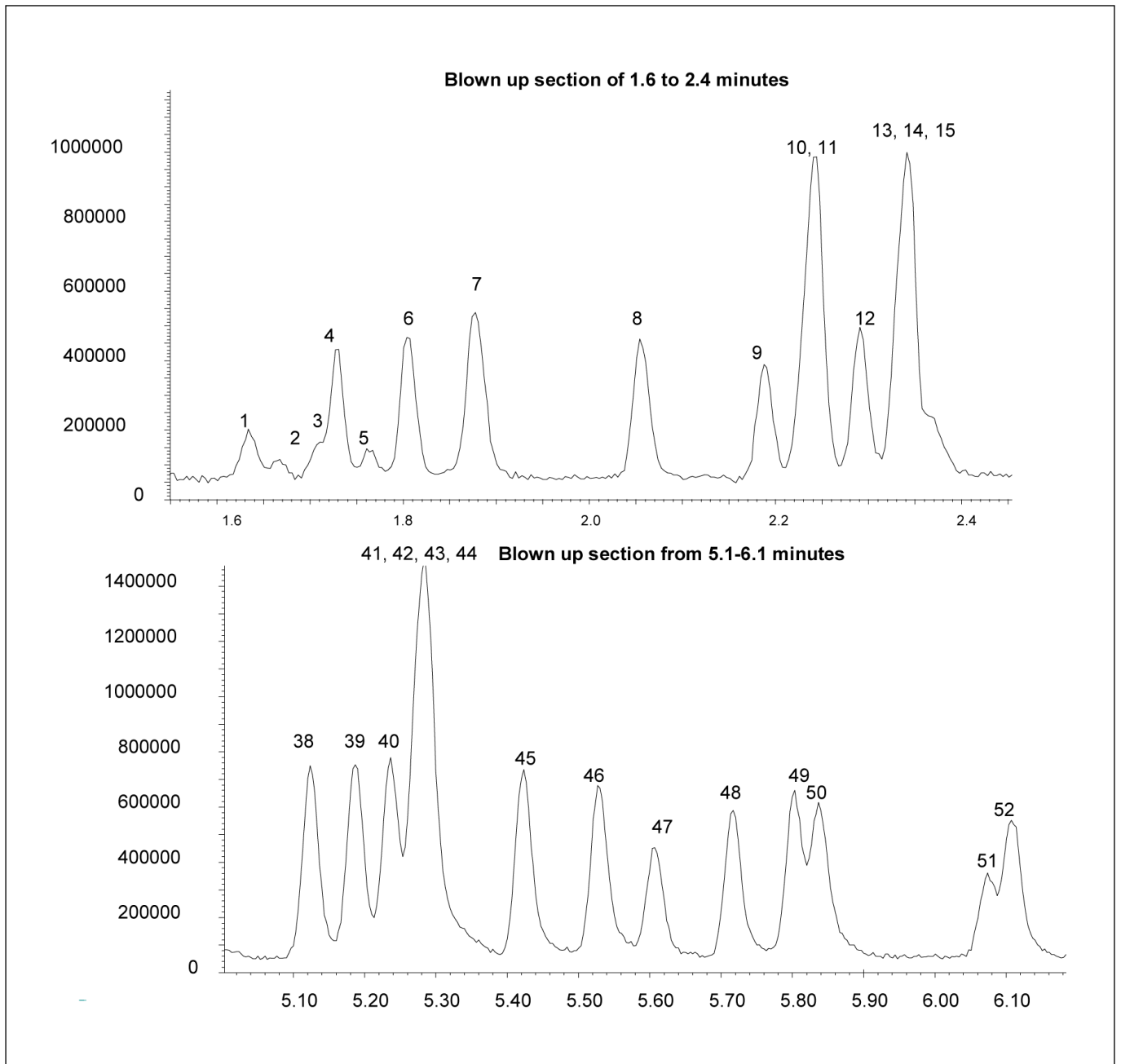
1. Dichlorodifluoromethane	17. Benzene	33. o-Xylene	49. n-Butylbenzene
2. Chloromethane	18. 1,2-Dichloroethene (trans)	34. 1,3-Dichloropropane	50. 4-Chlorotoluene
3. Chloroethene	19. Trichloroethene	35. 1,3-Dichloro-1-propene (trans)	51. Bromobenzene
4. Trichlorofluoromethane	20. Chloroform	36. n-Propylbenzene	52. 1-Bromo-4-fluorobenzene (IS)
5. Chloroethane	21. Tetrachloroethene	37. Chlorobenzene	53. 1,4-Dichlorobenzene
6. Bromomethane	22. Bromochloromethane	38. t-Butylbenzene	54. Bromoform
7. 1,1-Dichloroethene	23. 1,2-Dichloropropane	39. 1,2,4-Trimethylbenzene	55. 1,3-Dichlorobenzene
8. Iodomethane (IS)	24. Toluene	40. sec-Butylbenzene	56. 1,2,3-Trichloropropane
9. 2,2-Dichloropropane	25. 1,2-Dichloroethane	41. 1,1,1,2-Tetrachloroethane	57. 1,2-Dichlorobenzene
10. 1,2-Dichloroethene (cis)	26. Ethylbenzene	42. Styrene	58. 1,1,2,2-Tetrachloroethane
11. Pentafluorobenzene (IS)	27. 1,3-Dichloro-1-propene (cis)	43. 1,1,2-Trichloroethane	59. Hexachlorobutadiene
12. 1,1-Dichloro-1-propene	28. m-Xylene	44. 1,2-Dibromoethane	60. 1,2,4-Trichlorobenzene
13. Carbon tetrachloride	29. p-Xylene	45. 4-Isopropyltoluene	61. 1,2-Dibromo-3-chloropropane
14. 1,1,1-Trichloroethane	30. Bromodichloromethane	46. 1,3,5-Trimethylbenzene	62. 1,2,3-Trichlorobenzene
15. 1,1-dichloroethane	31. Dibromomethane	47. Dibromochloromethane	63. Naphthalene
16. Dichloromethane	32. Isopropylbenzene	48. 2-Chlorotoluene	



Acknowledgements: Mark Krause.

Analysis of USEPA 502.2 mix

SolGel-WAX™



For more information visit www.trajanscimed.com or contact techsupport@trajanscimed.com