

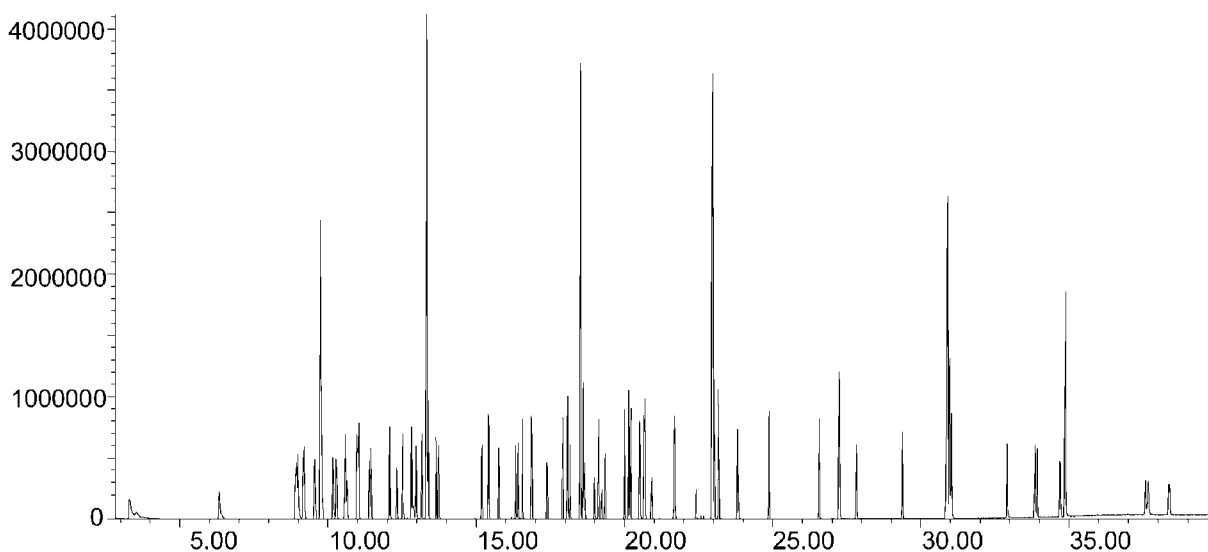
## Analysis of USEPA 8270 mix

BPX5

Column part number	054101		
Phase	BPX5	Carrier gas flow	1.1 mL/min
Column	30 m x 0.25 mm x 0.25 $\mu$ m	Constant flow	On
Sample	5 ppm solution	Injection mode	Splitless
Initial temperature	40°C, 3 min	Purge on time	0.5 min
Rate	8°C/min to 300°C	Purge on (split) vent flow	40 mL/min
Final temperature	300°C, 9 min	Injection volume	1 $\mu$ L
Detector	MS	Injection temperature	250°C
Carrier gas	He	Autosampler	No
Inlet pressure	16 psi for 30 sec then reduce to 10 psi	Liner type	4 mm ID Single Gooseneck
Pressure rate	10 psi to 28 psi at 0.5 psi/min	Full scan / SIM	Full scan 41-450
Final pressure	28 psi until end of run		

## Components

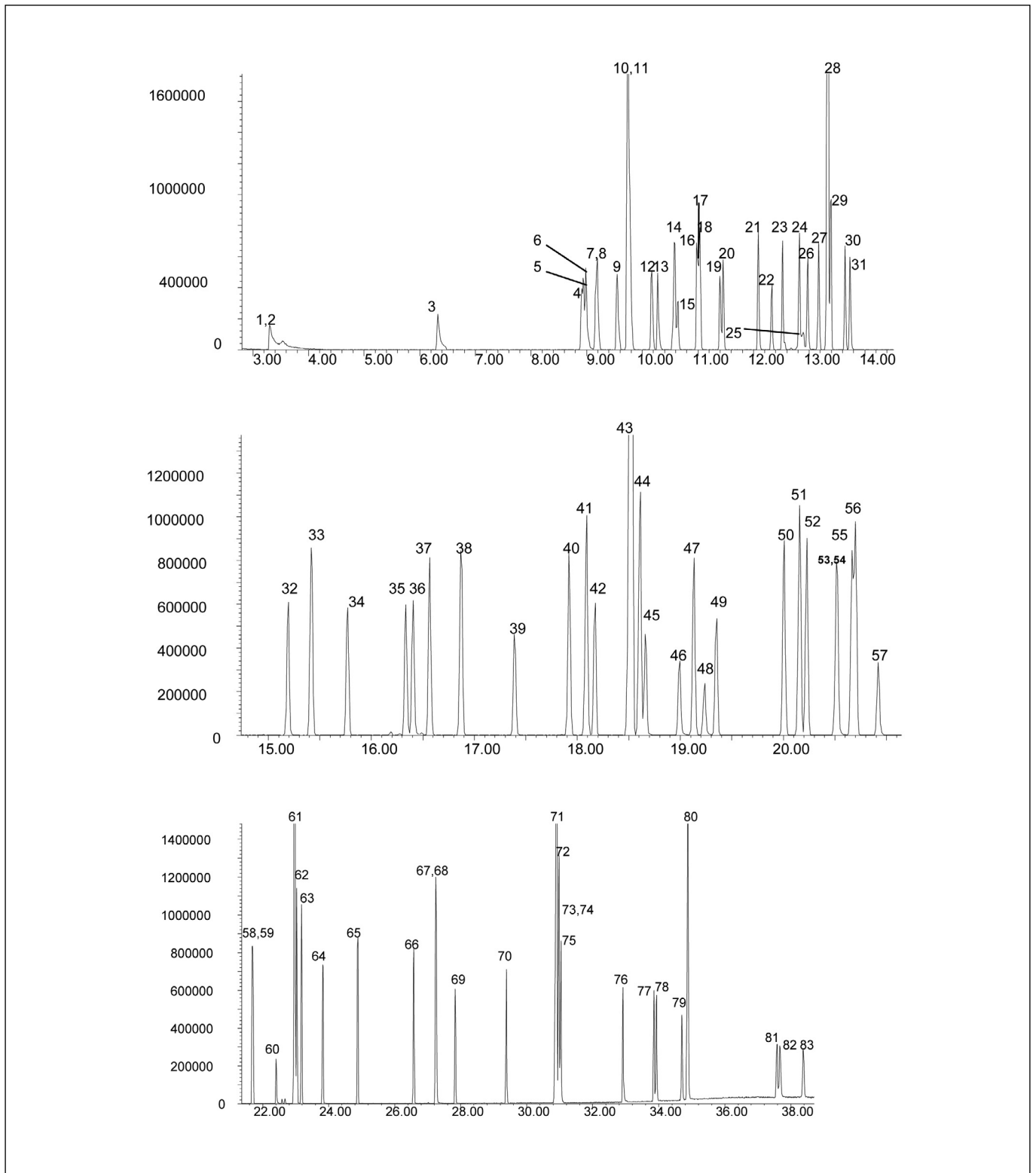
1. Pyridine	22. 2-Nitrophenol	43. Acenaphthene-d10	64. Carbazole
2. n-Nitrosodimethylamine	23. 2,4-Xylenol	44. Acenaphthene	65. Di-n-butyl phthalate
3. 2-Fluorophenol	24. bis- (2-Chloroethoxy) methane	45. 3-Nitroaniline	66. Fluoranthene
4. Phenol-d5	25. Benzoic acid	46. 2,4-Dinitrophenol	67. Benzidine
5. Phenol	26. 2,4-Dichlorophenol	47. Dibenzofuran	68. Pyrene
6. Aniline	27. 1,2,4-Trichlorobenzene	48. 4-Nitrophenol	69. p-Terphenyl-d14
7. 2-Chlorophenol	28. Naphthalene-d8	49. 2,4-Dinitrotoluene	70. Butyl benzyl phthalate
8. bis- (2-chloroethyl) ether	29. Naphthalene	50. Diethylphthalate	71. Benz[a]anthracene
9. 1,3-Dichlorobenzene	30. Hexachlorobutadiene	51. Fluorene	72. Chrysene-d12
10. 1,4-Dichlorobenzene-d4	31. 4-Chloroaniline	52. 4-Chlorophenyl phenyl ether	73. Chrysene
11. 1,4-Dichlorobenzene	32. 4-Chloro-3-methylphenol	53. 2-Methyl-4,6-dinitrophenol	74. 3,3-Dichlorobenzidine
12. 1,2-Dichlorobenzene	33. 2-Methylnaphthalene	54. 4-Nitroaniline	75. bis (2-Ethylhexyl) phthalate
13. Benzyl alcohol	34. Hexachlorocyclopentadiene	55. n-Nitrosodiphenylamine	76. Di-n-octyl phthalate
14. 2-Methyl phenol	35. 2,4,6-Trichlorophenol	56. Azobenzene	77. Benzo (b) fluoranthene
15. bis-(2-chloroisopropyl)ether	36. 2,4,5-Trichlorophenol	57. 2,4,6-Tribromophenol	78. Benzo (k) fluoranthene
16. n-Nitroso-di-n-propylamine	37. 2-Fluorobiphenyl	58. 4-Bromophenyl phenyl ether	79. Benzo (a) pyrene
17. Hexachloroethane	38. 2-Chloronaphthalene	59. Hexachlorobenzene	80. Perylene-d12
18. 4-Methylphenol	39. 2-Nitroaniline	60. Pentachlorophenol	81. Indeno (1,2,3-cd) perylene
19. Nitrobenzene-d5	40. Dimethyl phthalate	61. Phenanthrene-d10	82. Dibenz (a,h) anthracene
20. Nitrobenzene	41. Acenaphthylene	62. Phenanthrene	83. Benzo[g,h,i]perylene
21. Isophorone	42. 2,6-Dinitrotoluene	63. Anthracene	



Acknowledgements: Mark Ferry, ECS/MDL, USA.

# Analysis of USEPA 8270 mix

BPX5



For more information visit [www.trajanscimed.com](http://www.trajanscimed.com) or contact [techsupport@trajanscimed.com](mailto:techsupport@trajanscimed.com)