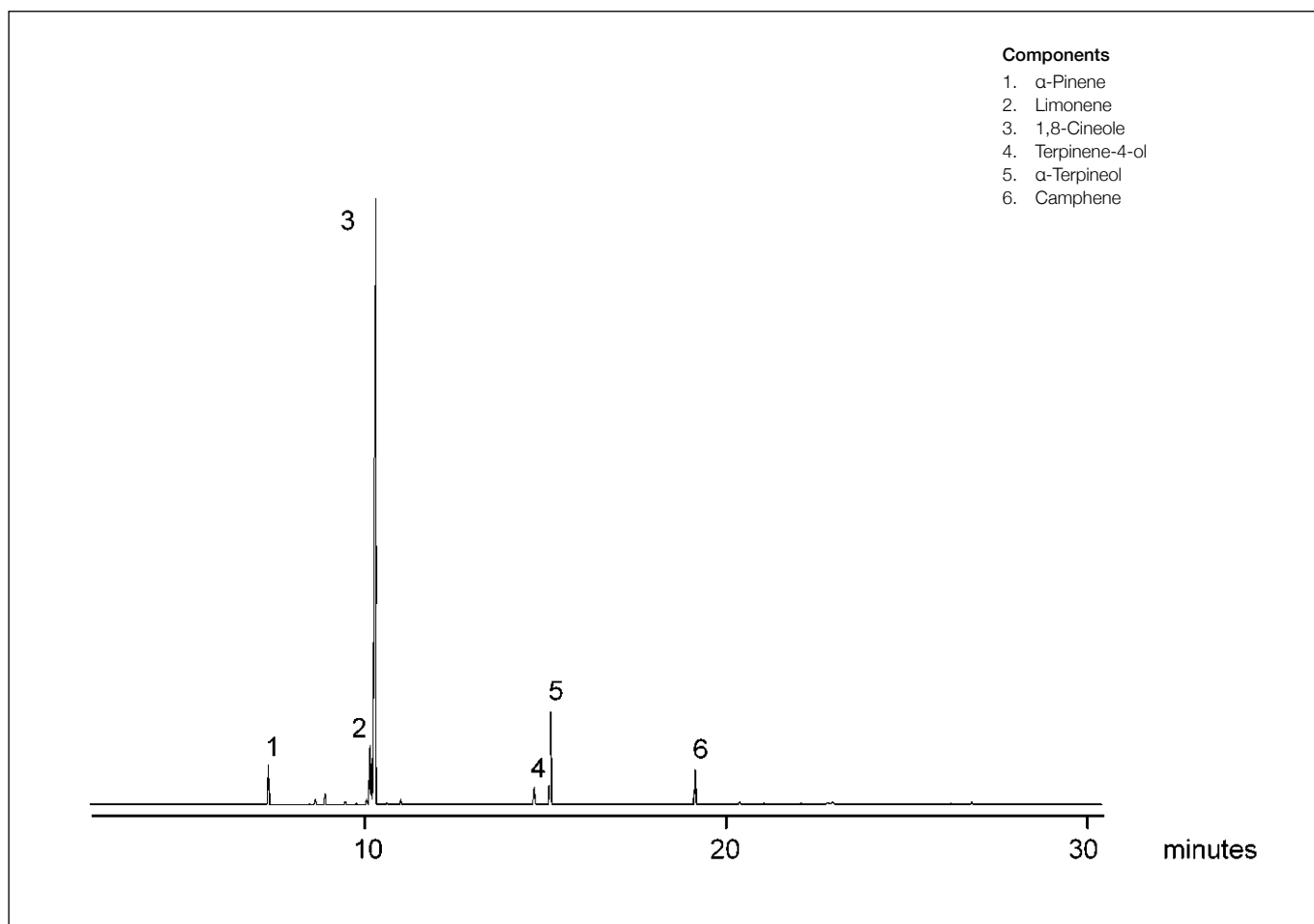


Analysis of eucalyptus oil

BPX5

Column part number	054101		
Phase	BPX5	Final temperature	250°C, 15 min
Column	30 m x 0.25 mm x 0.25 µm	Detector	MS
Sample	1:20 dilution in dichloromethane (ng/mL)	Carrier gas	He, 35 cm/sec at 45°C
		Injection mode	Split (50:1), 250°C
Initial temperature	45°C, 1 min	Injection volume	1 µL
Rate	5°C/min	Interface/source/quad temperature	320°C, 250°C, 106°C


 For more information visit www.trajanscimed.com or contact techsupport@trajanscimed.com