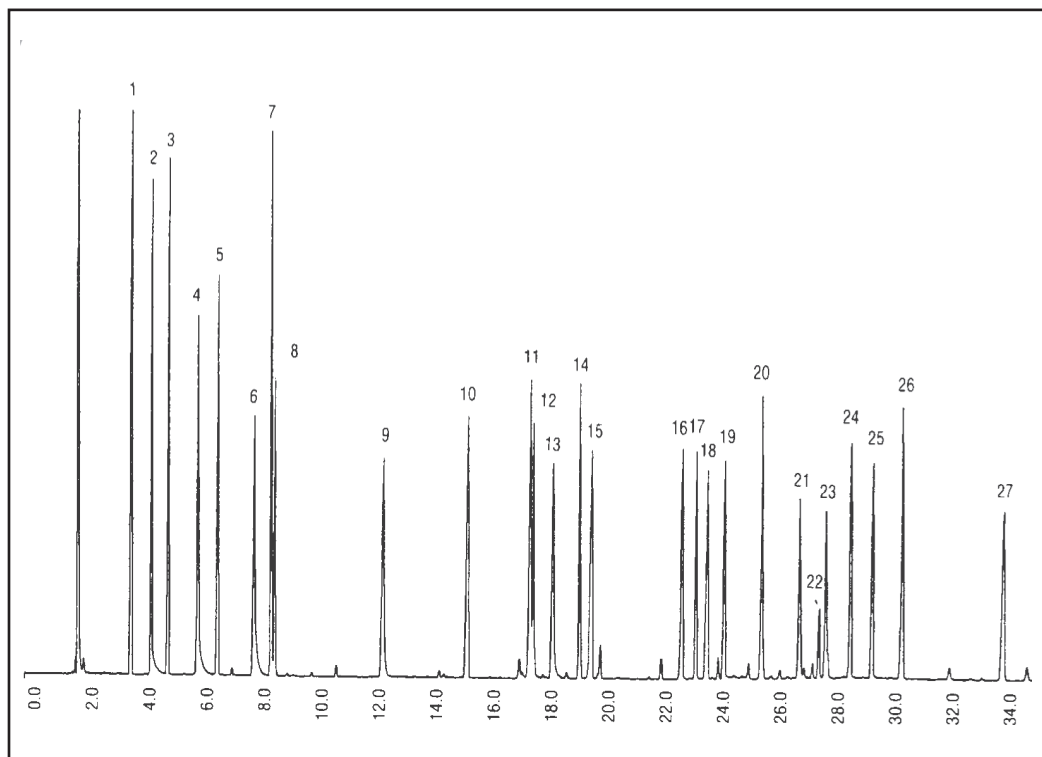


GC CAPILLARY COLUMN APPLICATIONS: FLAVORS/FRAGRANCES

Aldehydes

COLUMN: BTR-CW, Carbowax/
BTR -Oxygen resistant
30M. x 0.25mm I.D. x
0.25µm film
Cat. No.: BTR-CW-30-0.25F
Temperature: 75° (5°/min) - 220°C
Injector: 230°C
Detector: 300°C , FID
Carrier Gas: 33 cm/sec., Helium

1. ethyl caproate
2. C-8 aldehyde
3. ethyl heptoate
4. C-9 aldehyde
5. ethyl caprylate
6. C-10 aldehyde
7. benzaldehyde
8. ethyl pelargonate
9. C-12 aldehyde
10. ethyl laurate
11. clonal
12. hydroxycitronella
13. cyclamen aldehyde
14. anisaldehyde
15. ethyl myristate
16. hexyl salicylate
17. heliotropine
18. ethyl palmitate
19. hedione
20. hexyl cinnamic aldehyde
21. helional
22. lylal
23. lylal
24. ethyl vanillin
25. vanillin
26. benzyl benzoate
27. benzyl salicylate



PO Box 3881, Woodbridge, CT 06525 • (203) 393-3112 • FAX (203) 393-0391
TOLLFREE: 800-275-7033 • E-MAIL: tech@quadrexcorp.com