

# GC CAPILLARY COLUMN APPLICATIONS: ENVIRONMENTAL

## EPA Method 524.2

## Drinking Water

COLUMN: 007-624,  
Cyanopropyl Phenyl  
Methylpolysiloxane  
30M. x 0.25mm I.D. x 2.0µm film

Cat. No.: 007-624-30-2.0F

Temperature: 35° (2 min. hold)  
(6°/min.) - 150° -  
(2.5°/min.) - 240°C

Injector: 220°C

Detector: MSD

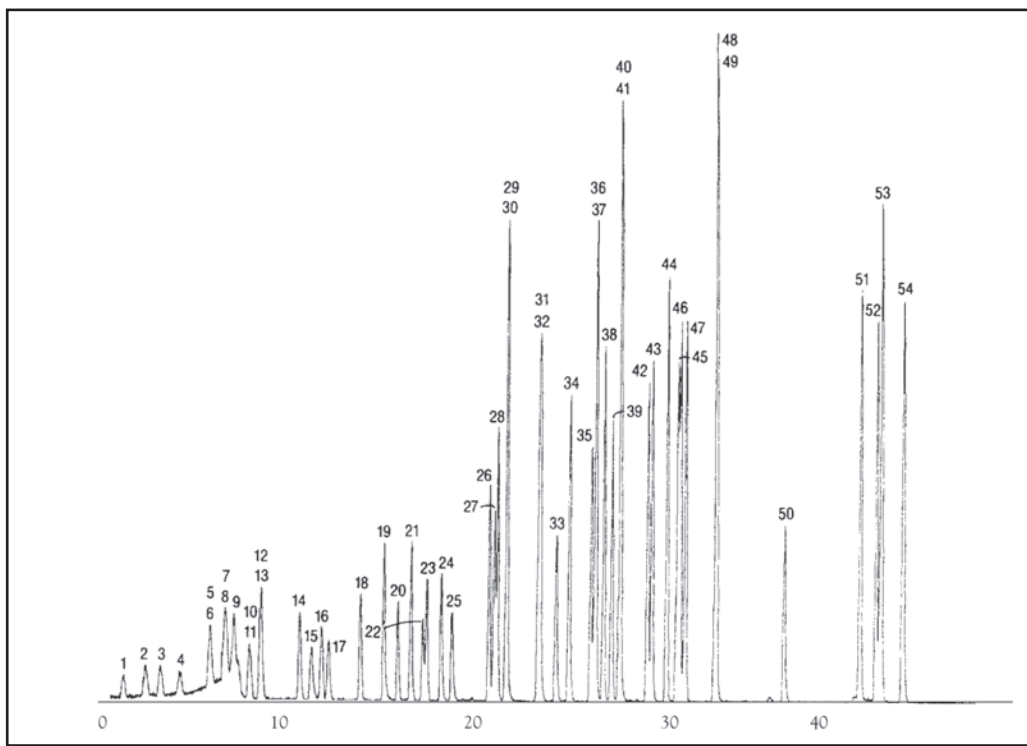
Carrier Gas: 28 cm/sec., Helium

- 1,1-dichloroethylene
- methylene chloride
- trans 1,2-dichloroethylene
- 1,1-dichloroethane
- 2,2-dichloropropane
- cis 1,2-dichloroethylene
- bromochloromethane
- chloroform
- 1,1,1-trichloroethane
- 1,1-dichloropropylene
- carbon tetrachloride
- benzene
- 1,2-dichloroethane
- trichloroethylene
- 1,2-dichloropropane
- dibromomethane
- bromodichloromethane
- cis-1,3-dichloropropene
- toluene
- trans 1,3-dichloropropene
- 1,1,2-trichloroethane
- 1,3-dichloropropane
- tetrachloroethene
- dibromochloromethane
- 1,2-dibromoethane
- chlorobenzene
- 1,1,1,2-tetrachloroethane
- ethylbenzene
- m-xylene
- p-xylene
- o-xylene
- styrene
- bromoform
- isopropylbenzene
- 1,1,2,2-tetrachloroethane

- 1,2,3-trichloropropane
- bromobenzene
- n-propylbenzene
- 2-chlorotoluene
- 4-chlorotoluene
- 1,3,5-trimethylbenzene
- sec-butylbenzene

- 1,2,4-trimethylbenzene
- tert-butylbenzene
- 1,3-dichlorobenzene
- p-isopropyltoluene
- 1,4-dichlorobenzene
- n-butylbenzene

- 1,2-dichlorobenzene
- 1,2-dibromo-3-chloropropane
- 1,2,4-trichlorobenzene
- hexachlorobutadiene
- naphthalene
- 1,2,3-trichlorobenzene



PO Box 3881, Woodbridge, CT 06525 • (203) 393-3112 • FAX (203) 393-0391  
TOLLFREE: 800-275-7033 • E-MAIL: [tech@quadrexcorp.com](mailto:tech@quadrexcorp.com)