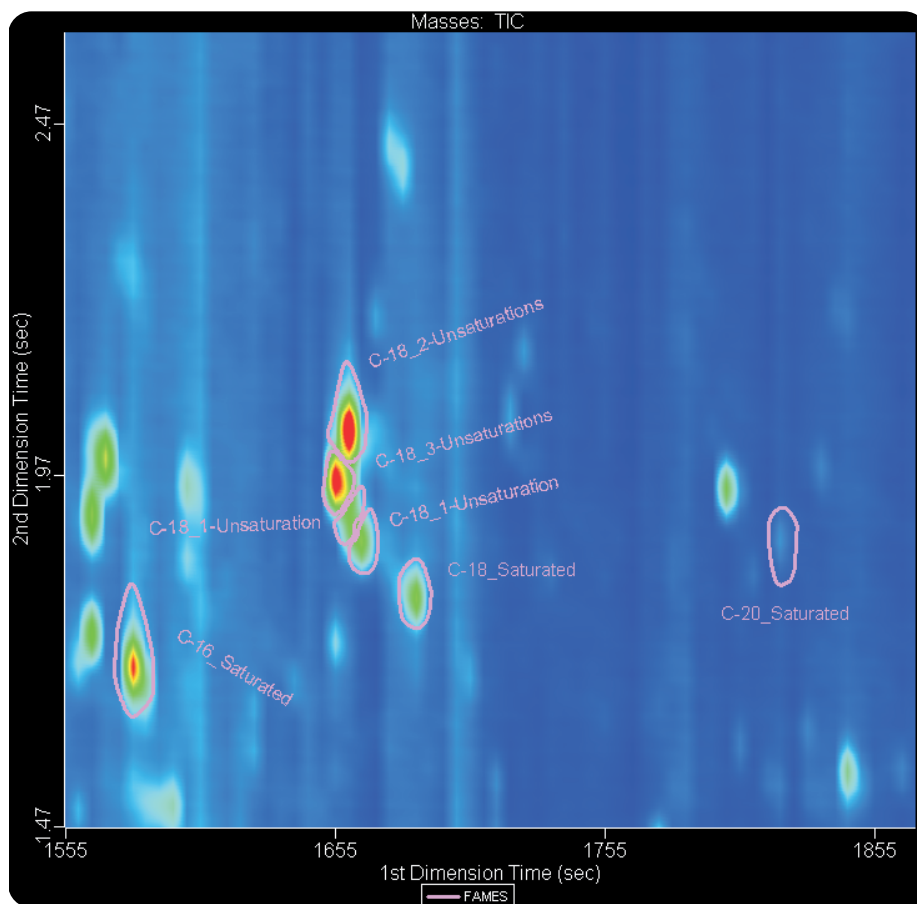


GCxGC-TOFMS Analysis of TMS Derivatives in Plant Extracts with Classifications and Separation of FAMES

Life Science and Chemical Analysis Centre
LECO Corporation, Saint Joseph, Michigan USA



Plant extract with classifications of saturated and unsaturated C16 - C18 FAMES.

Columns:

30 m x 0.25 mm x 0.25 μ m Rtx-1ms
1.5 m x 0.18 mm x 0.18 μ m DB-17ms

TOFMS:

40 to 510 m/z @ 200 spectra/s

For questions on this analysis
e-mail us at: life_science@leco.com

For a complete listing of snapshots
and application notes visit us on the
web at www.leco.com

