

Fast analysis of coal tar polycyclic aromatic hydrocarbons on Agilent J&W Select PAH

Application Note

Author

John Oostdijk
Agilent Technologies, Inc.

Introduction

The difficulty in analyzing polycyclic aromatic hydrocarbons (PAHs) is the number of PAHs with the same mass. This makes their separation by GC/MS rather difficult, and so column selectivity and an optimized oven program are necessary for the resolution of PAHs. We describe here the fast analysis of a coal tar sample using an optimized oven program and a 15 m x 0.15 mm x 0.10 μm Select PAH column.

Coal tar is a brown or black liquid of high viscosity that smells of naphthalene and aromatic hydrocarbons. It is obtained from the destructive distillation of coal. In the past, coal tar was sourced as a by-product from the manufacture of coal gas but is now produced during the production of coke for steel making. The crude tar contains many organic compounds, such as benzene, naphthalene, methylbenzene and phenols, which can be obtained by distillation, leaving a residue of pitch. At one time coal tar was the major source of organic chemicals, most of which are now derived from petroleum and natural gas. Coal tar pitch is mainly used as binding agent in the production of carbon electrodes, anodes and Søderberg electrodes, for instance, by the aluminium industry. It is also used as a binding agent for refractories, clay pigeons, active carbon, coal briquetting, road construction and roofing. In addition, small quantities are used for heavy-duty corrosion protection.

The standard reference material for coal tar analysis (SRM 1597a, NIST) is a natural, combustion-related mixture of PAHs from a medium crude coke-oven tar that is dissolved in toluene. It is intended for use in the evaluation and validation of analytical methods for the determination of PAHs. A sample of SRM 1597a was therefore analyzed using an optimized oven program for the Select PAH column, demonstrating the excellent performance of the column with this reference material.



Agilent Technologies

Conditions

Technique: GC/MS, Triple Quad
Column: Select PAH, 15 m x 0.15 mm, df = 0.10 μm (part number CP7461)
Sample: SRM 1597a, concentration approximately 0.2-1030 mg/kg (www.nist.gov)
Injection Volume: 1.0 μL SIM mode, 0.1 μL FS mode
Temperature: 70 $^{\circ}\text{C}$ (0.40 min), 70 $^{\circ}\text{C}/\text{min}$, 180 $^{\circ}\text{C}$
Program: 7 $^{\circ}\text{C}/\text{min}$, 230 $^{\circ}\text{C}$ (7 min), 50 $^{\circ}\text{C}/\text{min}$, 280 $^{\circ}\text{C}$ (7 min), 30 $^{\circ}\text{C}/\text{min}$, 350 $^{\circ}\text{C}$ (4 min)
Carrier Gas: Helium, constant flow 1.2 mL/min
Injection: 300 $^{\circ}\text{C}$, Splitless mode, 0.5 min @ 100 mL/min
Detection: Triple Quad, EI in FS or SIM mode, ion source 275 $^{\circ}\text{C}$, transfer line 300 $^{\circ}\text{C}$

Table 1. Peak identification for Figure 1

Peak	Name
BaA	Benzo[a]anthracene
BaP	Benzo[a]pyrene
BbFA	Benzo[b]fluoranthene
BkFa	Benzo[k]fluoranthene
BjFA	Benzo[j]fluoranthene
CHR	Chrysene
CPP	Cyclopenta[c,d]pyrene
TP	Triphenylene

Results and Discussion

The sample was analyzed directly in full scan and SIM mode using the same conditions as for a standard with regulated and interfering PAHs. Chromatograms with peak identifications are shown in Figures 1 to 3. Figure 1 shows chrysene (66 mg/kg) separated from triphenylene (12 mg/kg). Benzo[b,k,j]fluoranthene (66, 37 and 41 mg/kg) was separated from benzo[a]pyrene (94 mg/kg). The MS spectrum from chrysene is also shown. As well as m/z 228, other ions, such as m/z 226 and m/z 229, were formed. PAHs were mostly very stable and only low fragment ions were observed, for example m/z 113 and 114 in the mass spectrum.

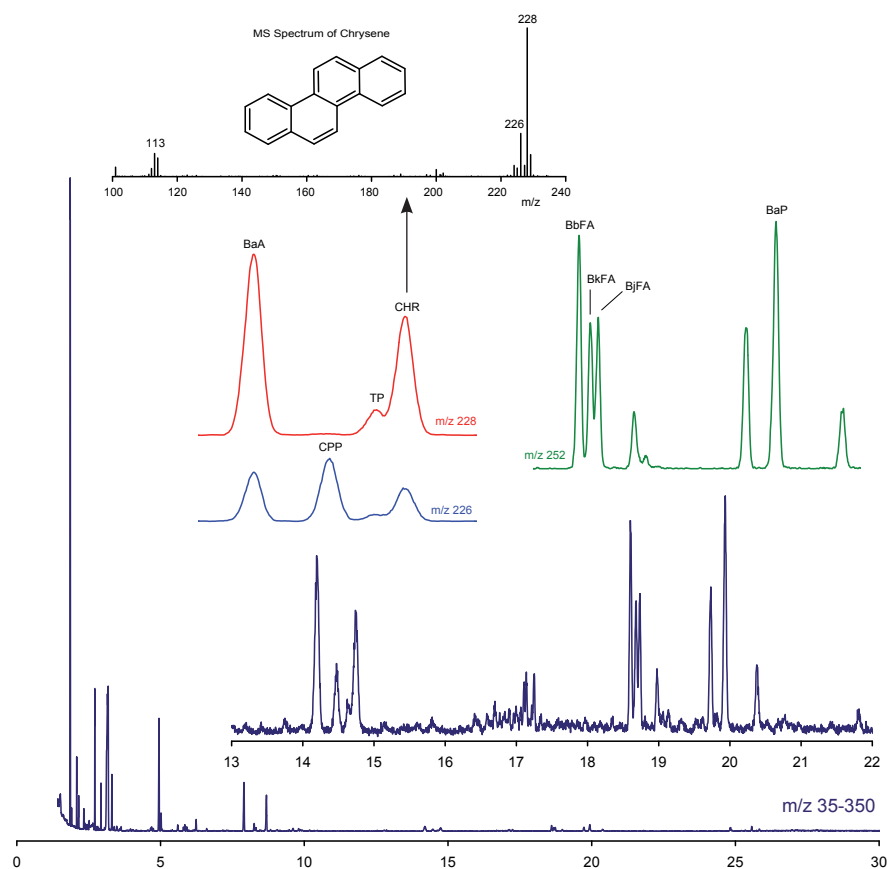


Figure 1. GC/MS analysis of 0.1 μL of SRM 1597a in full scan mode (m/z 35-350) on Select PAH

Table 2. Peak identification for Figure 2

Peak	Name
ACL	Acenaphthylene (263 mg/kg)
BaA	Benzo[a]anthracene (98 mg/kg)
BaP	Benzo[a]pyrene (94 mg/kg)
BghiP	Benzo[g,h,i]perylene (51 mg/kg)
DBaP	Dibenzo[a,e]pyrene (9 mg/kg)
FA	Fluoranthene (327 mg/kg)
PHE	Phenanthrene (454 mg/kg)
PY	Pyrene (240 mg/kg)
NA	Naphthalene (1030 mg/kg)

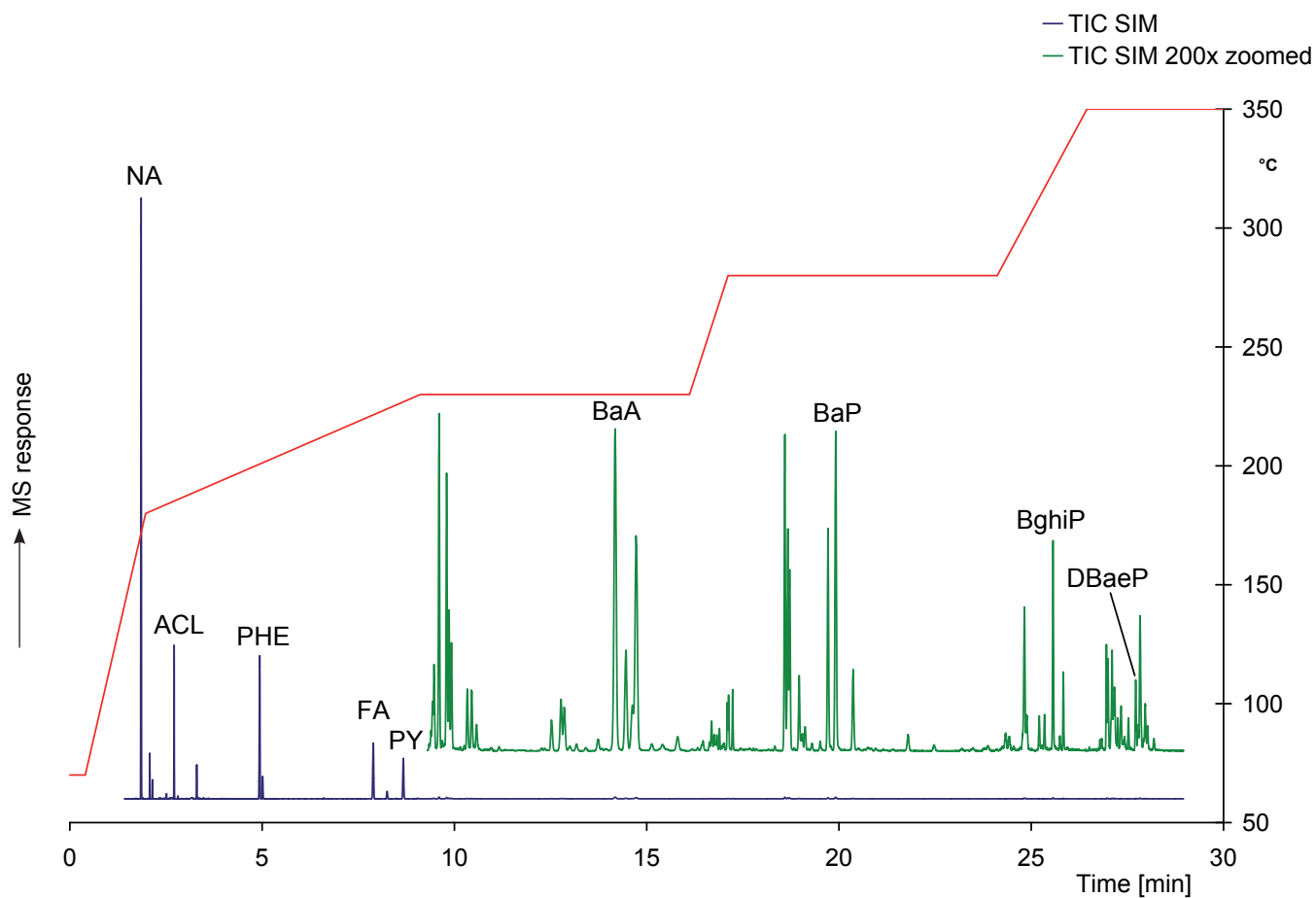


Figure 2. GC/MS analysis of 1 μ L of SRM 1597a in SIM mode on Select PAH. The final part of the chromatogram was enlarged because of the large concentration difference in the sample

Table 3. Peak identification for Figure 3

Peak	Name
ATR	Anthanthrene (Dibenzo[d,e,f,m,n,o]chrysene)
BaFA	Benzo[a]fluoranthene
BaFL	Benzo[a]fluorene
BaP	Benzo[a]pyrene
BbCHR	Benzo[b]chrysene
BbFA	Benzo[b]fluoranthene
BbFL	Benzo[b]fluorene
BbNTP	Benzo[b]naphto[2,1-d]thiophene

Peak	Name
BbPer	Benzo[b]perylene
BbTP	Benzo[b]triphenylene
BcFL	7H-benzo[c]fluorene
BeP	Benzo[e]pyrene
BghiP	Benzo[g,h,i]perylene
BjFA	Benzo[j]fluoranthene
BkFA	Benzo[k]fluoranthene
Cor	Coronene
DBaeP	Dibenzo[a,e]pyrene

Peak	Name
DBahA	Dibenzo[a,h]anthracene
DBahP	Dibenzo[a,h]pyrene
DBaiP	Dibenzo[a,i]pyrene
DBalP	Dibenzo[a,l]pyrene
IP	Indeno[1,2,3-cd]pyrene
6MC	6-Methylchrysene
5MC	5-Methylchrysene
Per	Perylene
Pic	Picene

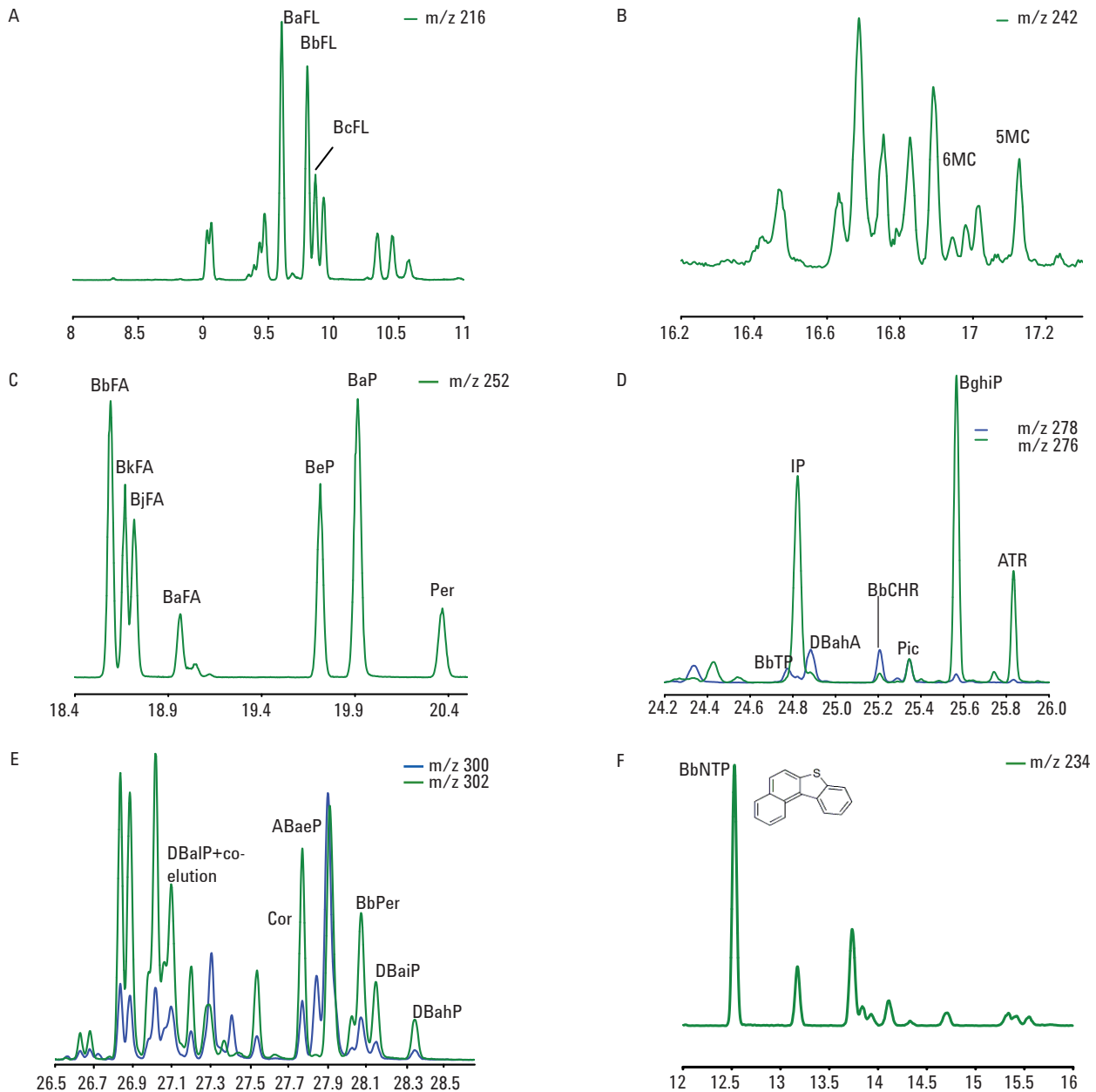


Figure 3. GC/MS analysis of 1 µL of SRM 1597a in SIM mode on Select PAH . Some examples of critical separations are shown: A. Benzofluorenes, B. Methylchrysenes, C. Benzofluoranthenes and isomers, D. Dibenzanthracenes and isomers, E. Dibenzopyrenes and isomers, F. Benzo[b]naptho[] thiophene isomers

Conclusion

The Select PAH column separated target PAHs in a complex mixture of coal tar in a single run with a run time of 29 min. Together with an optimized oven program, this unique column is the only easy-to-use, single-shot solution that separates all regulated PAH isomers, with no false positives or inaccurate results. With high speed, high resolution and high temperature stability it is the perfect column for accurate PAH analysis.

References

- Beekman M, Boersma AHR and Sijm DTHM, (2008) Coal-tar pitch high temperature (CTPHT), transitional arrangements and way forward under REACH. REACH-SEA report of scoping study. Report 601780001/2008. National Institute for Public Health and the Environment, The Netherlands.
- Bordajandi LR et al, (2008) Optimisation of the GC-MS conditions for the determination of the 15 EU foodstuff priority polycyclic aromatic hydrocarbons, *J. Sep. Sci.*, 31, 1769-1778.
- Gómez-Ruiz JA and Wenzl T, (2009) Evaluation of gas chromatography columns for the analysis of the 15+1 EU-priority polycyclic aromatic hydrocarbons (PAHs). *Anal. Bioanal. Chem.*, 393, 1697-1707.
- Lerda D, (2009) Polycyclic Aromatic Hydrocarbons (PAHs) Factsheet. European Commission, Joint Research Centre, Institute for Reference Materials and Measurements, JRC 500871.
- NIST. Standard Reference Material 1597a, Complex Mixture of Polycyclic Aromatic Hydrocarbons from Coal Tar. National Institute of Standards and Technology, Gaithersburg, MD, USA.
- Poster DL, Schantz MM, Sander LC and Wise SA, (2006) Analysis of polycyclic aromatic hydrocarbons (PAHs) in environmental samples: a critical review of gas chromatographic (GC) methods. *Anal. Bioanal. Chem.*, 386, 859-881.
- Sander LC and Wise SA, (1997) Polycyclic Aromatic Hydrocarbon Structure Index, NIST Special Publication. http://www.cstl.nist.gov/acd/839.02/pah/sp922_Search.htm. National Institute of Standards and Technology, Gaithersburg, MD, USA.
- Wenzl T, Simon R, Kleiner J and Anklam E, (2006) Analytical methods for polycyclic aromatic hydrocarbons (PAHs) in food and the environment needed for new food legislation in the European Union. *Trends in Anal. Chem.*, 25(7), 716-725.
- Ziegenhals K, Hubschmann HJ, Speer K and Jira W, (2008) Fast-GC/HRMS to quantify the EU priority PAH, *J. Sep. Sci.*, 31, 1779-1786.

www.agilent.com/chem

This information is subject to change without notice.

© Agilent Technologies, Inc. 2011

Published in UK, April 12, 2011

SI-02279



Agilent Technologies