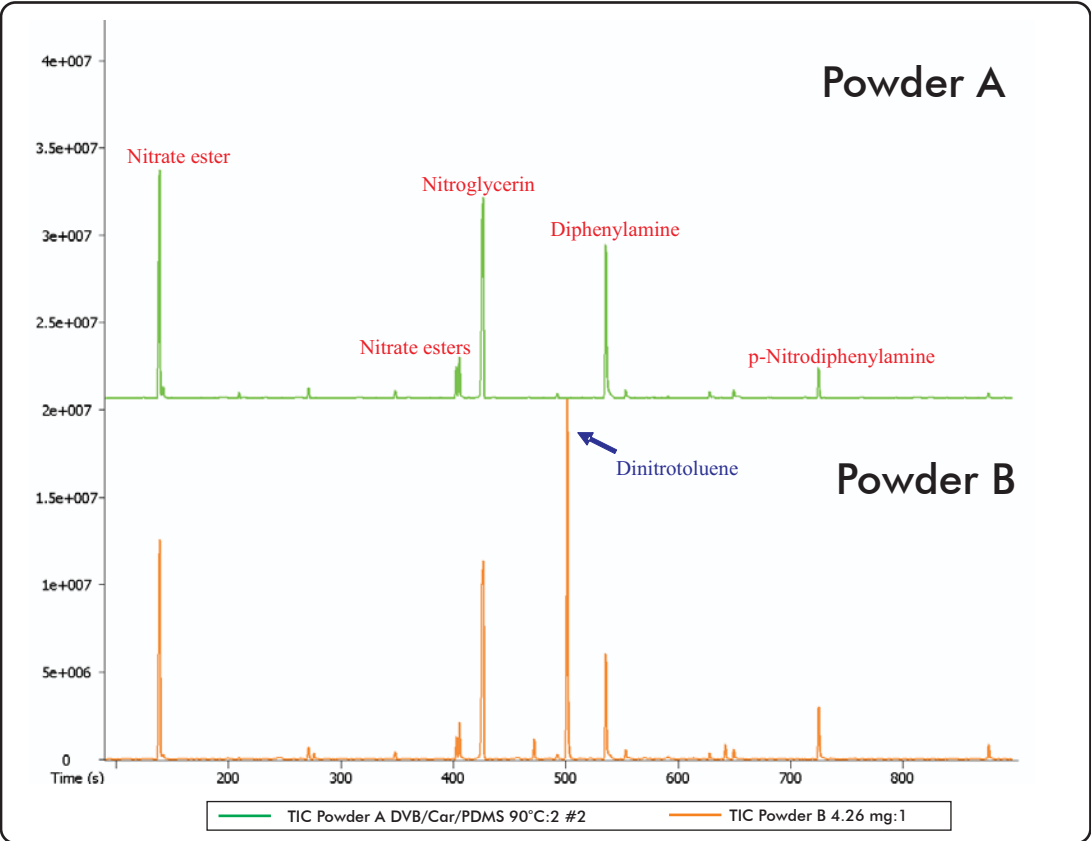


SPME GC-TOFMS of Smokeless Powders

Life Science and Chemical Analysis Centre
LECO Corporation, Saint Joseph, Michigan USA



Volatile Components from Smokeless Powder sampled by SPME and analyzed by GC-TOFMS.

Column:
20 m x 0.25 mm x 0.71 μ m RTx-TNT

TOFMS:
45 to 550 m/z @ 10 spectra/s

For questions on this analysis e-mail us at:
life_science@leco.com

For a complete listing of snapshots and application notes visit us on the web at www.leco.com

