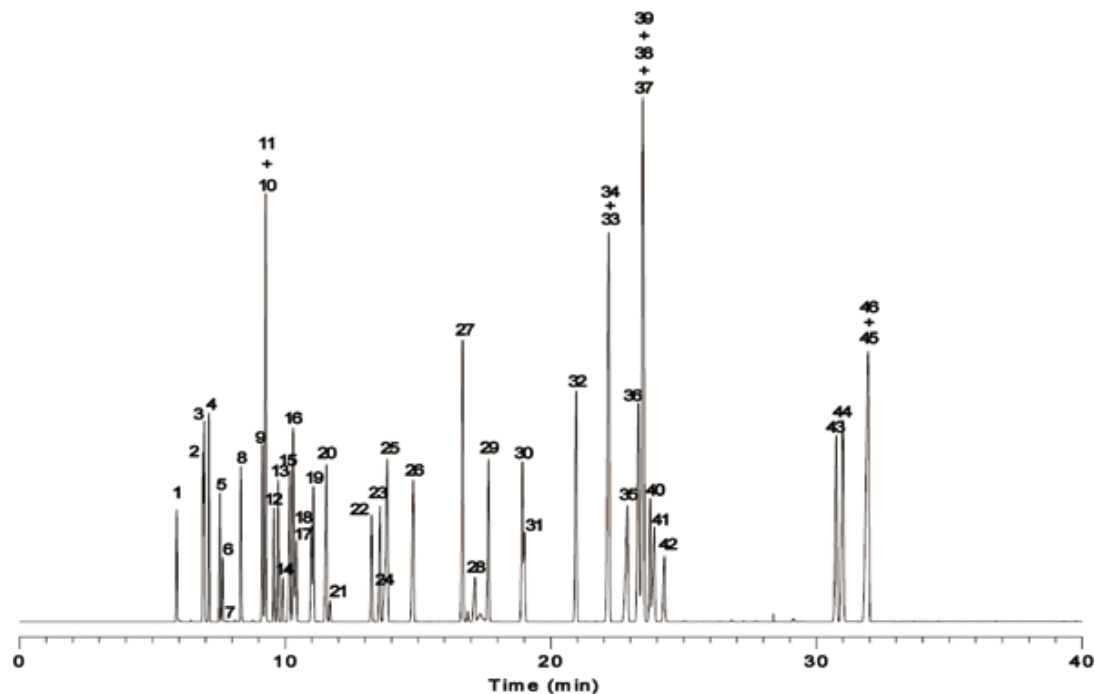


InertSearch™ for GC

InertCap® Applications

Organic solvents

Data No. GA036-0000



System	: GC/FID	Solutes :	1. Methanol	26. i-Amyl alcohol
Column	: InertCap 5 0.25mm I.D.×60m df=0.4µm		2. Acetone	27. Toluene
Column Temp.	: 40°C (5min)→4°C/min →230°C (5min)		3. i-Propanol	28. N,N-Dimethyl formamide
Carrier Gas	: He 130kPa		4. Ethyl ether	29. Methyl-n-butyl ketone
Injection	: Split 100mL/min 1µL 250°C		5. Methyl acetate	30. n-Butyl acetate
Detection	: FID Range 10 ¹ 250°C		6. Dichloromethane	31. Tetrachloroethylene
Sample	: Organic solvents Mixed evenly		7. Carbon disulfide	32. Chlorobenzene
			8. trans-1,2-Dichloroethylene	33. m-Xylene
			9. Methyl ethyl keton	34. p-Xylene
			10. 2-Butanol	35. Cyclohexanol
			11. n-Hexane	36. Styrene
			12. cis-1,2-Dichloroethylene	37. Cyclohexanone
			13. Ethyl acetate	38. 1-Methylcyclohexanol
			14. Chloroform	39. o-Xylenel
			15. i-Butanol	40. Cellosolve acetate
			16. Tetrahydrofuran	41. Butyl cellosolve
			17. Methyl cellosolve	42. 1,1,2,2-Tetrachloroethane
			18. 1,1,1-Trichloroethane	43. o-Dichlorobenzene
			19. 1,2-Dichloroethane	44. o-Cresol
			20. n-Butanol	45. m-Cresol
			21. Carbon Tetrachloride	46. p-Cresol
			22. Trichloroethylene	
			23. 1,4-Dioxane	
			24. Ethyl cellosolve	
			25. n-Propyl acetate	