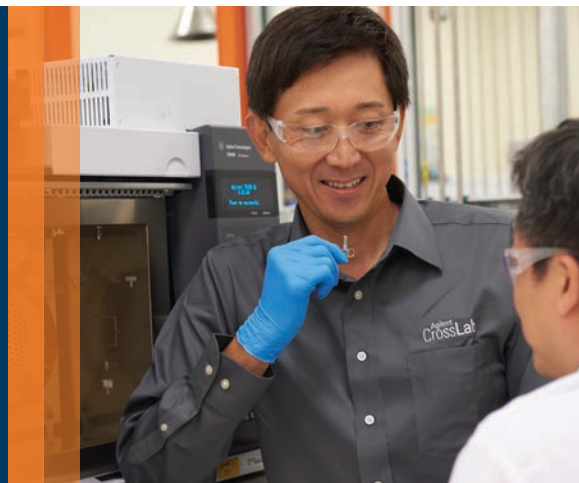


The Right GC Connections Make All the Difference

Agilent Self Tightening column nut



Want to make column connection hassles a thing of the past?

Column connections can loosen after multiple heating cycles, which contributes to high-frequency baseline noise, questionable results, and wasted time spent retightening fittings.

Eliminate retightening once and for all with the *newly redesigned Agilent Self Tightening column nut*

This unique, stainless steel GC column nut delivers a tight connection without expensive upgrades or adaptors. It gives you the advantages of:

- *Reliable performance.* An innovative spring-driven piston continuously presses against the short graphite/polyimide ferrule. So you can maintain a leak-free seal even after hundreds of injections.
- *Better stability.* New locking collar holds your column in place for accurate column depth and ferrule positioning.
- *Less wasted time.* There's no need to retighten after repeated thermal cycles.
- *Ease of use.* Finger-tight design lets anyone in your lab make consistent connections without tools.
- *Faster maintenance.* The low-torque seal prevents ferrules from sticking or crumbling.
- *Lower column bleed.* This maximizes column life.



New easy-lock collar

Quickly lock the column in place and ensure a consistent column length. Measuring and locking the column depth before installation also eliminates the need to open the MS detector port. This reduces the risk of vacuum leaks.

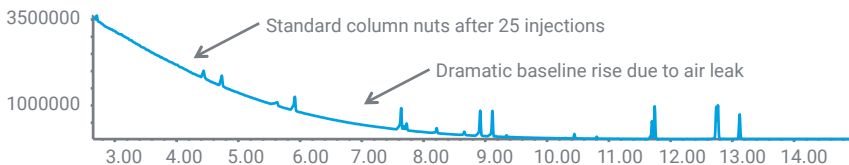
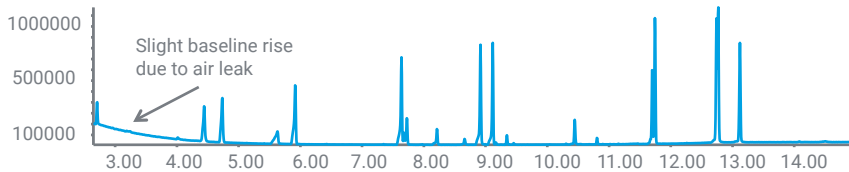
Find out more
www.agilent.com/chem/STnut

Make sure your column connections withstand the test of time

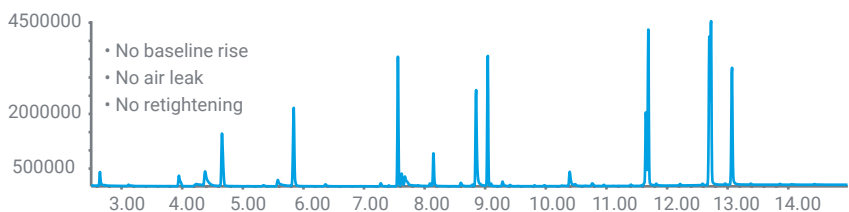
Comparison of standard fittings with Self Tightening column nuts

Even after retightening, air leaks still occurred with the standard fittings. With Agilent Self Tightening column nuts, leaks were not a problem—even after 400 injections.

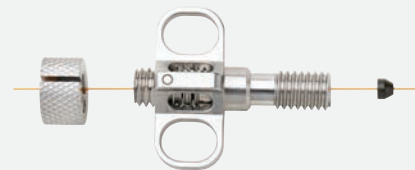
Standard column nuts after a new fitting



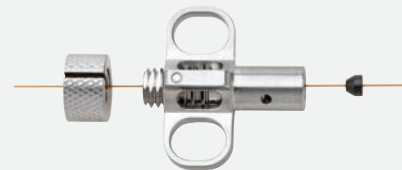
Agilent Self Tightening column nuts after 400 injections



Two configurations available—both use the same short ferrule



Agilent Self Tightening column nut for inlet and detector p/n G3440-81011



Agilent Self Tightening column nut for MS transfer line p/n G3440-81013

Three more ways to improve productivity and ensure consistent, high-quality data

1. Spend more time on what matters. New GC intelligence found in the Agilent Intuvo, 8890, and 8860 GC systems enables self-aware features and remote connectivity.
2. Eliminate laboratory variability—and ensure consistent flow, cleanliness, and recovery—with Agilent sample preparation products.
3. Choose Agilent J&W GC columns for the sharpest peaks, the best inertness, and the tightest column-to-column reproducibility.

End the frustration and lost productivity of frequent retightening.

To order, visit www.agilent.com/chem/STnut.

Find your local Agilent sales representative or Agilent authorized distributor at www.agilent.com/chem/contactus.

This information is subject to change without notice.

© Agilent Technologies, Inc. 2019
Published in the USA, August 14, 2019
5994-1253EN