

# EVOLUTE® EXPRESS

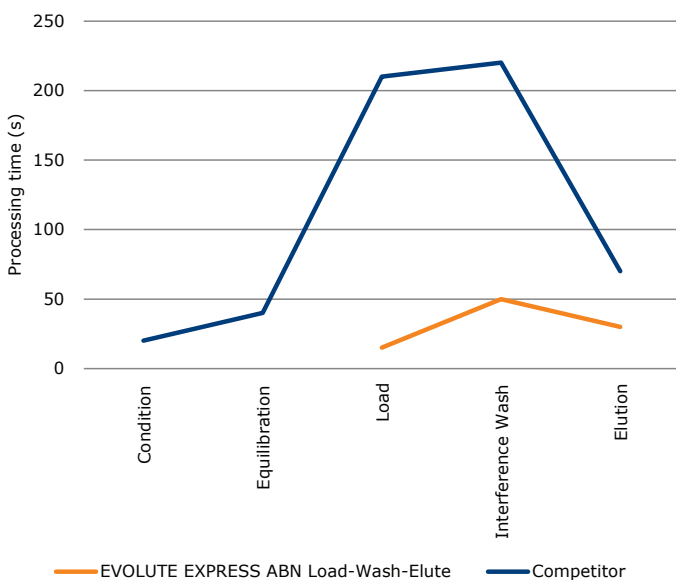
## Solid Phase Extraction Columns

EVOLUTE® EXPRESS SPE columns combine powerful EVOLUTE sorbent chemistry with enhanced ‘EXPRESS’ column hardware in a range of SPE column sizes.

EVOLUTE EXPRESS columns dramatically improve flow characteristics, and enhance sample preparation productivity. By truly eliminating the need for column conditioning and equilibration, samples can be prepared using a simple, fast ‘load, wash, elute’ procedure.

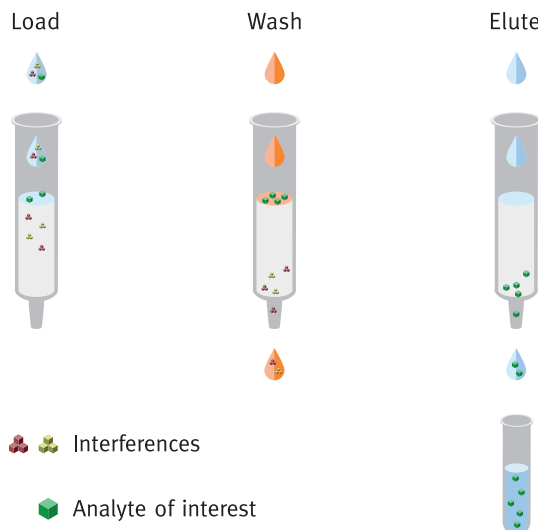
### Fast & Consistent Flow Rates

Even when loading aqueous biological fluid sample directly onto a dry column (load-wash-elute mode), flow rates are fast and consistent, and analyte recoveries are not adversely affected. This is particularly apparent at the sample load and subsequent wash (interference elution) steps.



**Figure 1.** 10 mg/1 mL EVOLUTE® EXPRESS vs competitor 10 mg/1 mL equivalent. N=12 for each product. Columns processed using the Biotage® Pressure+ instrument. Columns processed at 1 psi unless otherwise stated. Sample was pooled human urine diluted 1:3 with water.

Due to the difficulty in measuring times for each individual column, figures for the time to complete flow for the slowest flowing column are shown. For example for 10 mg EVOLUTE EXPRESS ABN load-wash-elute method, all samples loaded in less than 15 s, whereas for the competitor product, sample loading on all columns was complete after 210 s, and increased pressure (up to 5 psi) was required to load the total volume.



**Figure 2.** EVOLUTE EXPRESS load-wash-elute process

### Process More Samples Every Day

By eliminating the need for column conditioning and equilibration steps, the time saving for processing 96 samples using EVOLUTE EXPRESS columns utilizing the load-wash-elute methodology is up to 30%.

Step	Standard SPE procedure	EVOLUTE® EXPRESS load-wash-elute procedure
<b>Sample pre-treatment</b>	2% formic acid, 1:1, mix	2% formic acid, 1:1, mix
<b>Condition</b>	Methanol, 1 mL	Not required
<b>Equilibrate</b>	0.1% formic acid, 1 mL	Not required
<b>Load sample</b>	1 mL aqueous sample	1 mL aqueous sample
<b>Wash 1</b>	H <sub>2</sub> O/methanol (60:40, v/v), 1 mL	H <sub>2</sub> O/methanol (60:40, v/v), 1 mL
<b>Elute</b>	Methanol, 500 µL	Methanol, 500 µL
<b>Total time for 96 samples</b>	<b>33.15 minutes</b>	<b>24.02 minutes</b>

**Table 1.** Time Saving for automated processing of 96 Samples = **9.13 minutes** (~30% Reduction).

Instrument: Biotage® Extrahera Format: EVOLUTE® EXPRESS ABN 30 mg/1 mL x 96.

### Flexible Format for Cost Efficiency

EVOLUTE® EXPRESS columns are supplied as standard in the tabless (or flangeless) format. Up to 96 of the 1 mL format columns can populate a base plate for processing using Extrahera, Pressure+ or vacuum manifold, as a cost effective, modular alternative to a 96-well plate.



### Ordering Information

Part Number	Description	Quantity
<b>10 mg/1 mL Tabless format</b>		
<b>600-0001-AXG</b>	EVOLUTE EXPRESS ABN 10 mg/1 mL Tabless Columns	100
<b>601-0001-AXG</b>	EVOLUTE EXPRESS CX 10 mg/1 mL Tabless Columns	100
<b>602-0001-AXG</b>	EVOLUTE EXPRESS WCX 10 mg/1 mL Tabless Columns	100
<b>603-0001-AXG</b>	EVOLUTE EXPRESS AX 10 mg/1 mL Tabless Columns	100
<b>604-0001-AXG</b>	EVOLUTE EXPRESS WAX 10 mg/1 mL Tabless Columns	100
<b>30 mg/1 mL Tabless format</b>		
<b>600-0003-AXG</b>	EVOLUTE EXPRESS ABN 30 mg/1 mL Tabless Columns	100
<b>601-0003-AXG</b>	EVOLUTE EXPRESS CX 30 mg/1 mL Tabless Columns	100
<b>602-0003-AXG</b>	EVOLUTE EXPRESS WCX 30 mg/1 mL Tabless Columns	100
<b>603-0003-AXG</b>	EVOLUTE EXPRESS AX 30 mg/1 mL Tabless Columns	100
<b>604-0003-AXG</b>	EVOLUTE EXPRESS WAX 30 mg/1 mL Tabless Columns	100
<b>60 mg/3 mL Tabless format</b>		
<b>610-0006-BXG</b>	EVOLUTE EXPRESS ABN 60 mg/3 mL Tabless Columns	50
<b>611-0006-BXG</b>	EVOLUTE EXPRESS CX 60 mg/3 mL Tabless Columns	50
<b>612-0006-BXG</b>	EVOLUTE EXPRESS WCX 60 mg/3 mL Tabless Columns	50
<b>613-0006-BXG</b>	EVOLUTE EXPRESS AX 60 mg/3 mL Tabless Columns	50
<b>614-0006-BXG</b>	EVOLUTE EXPRESS WAX 60 mg/3 mL Tabless Columns	50

Part Number	Description	Quantity
<b>150 mg/6 mL Tabless format</b>		
<b>610-0015-CXG</b>	EVOLUTE EXPRESS ABN 150 mg /6 mL Tabless Columns	30
<b>611-0015-CXG</b>	EVOLUTE EXPRESS CX 150 mg /6 mL Tabless Columns	30
<b>612-0015-CXG</b>	EVOLUTE EXPRESS WCX 150 mg /6 mL Tabless Columns	30
<b>613-0015-CXG</b>	EVOLUTE EXPRESS AX 150 mg /6 mL Tabless Columns	30
<b>614-0015-CXG</b>	EVOLUTE EXPRESS WAX 150 mg /6 mL Tabless Columns	30
<b>500 mg/6 mL Tabless format</b>		
<b>610-0050-CXG</b>	EVOLUTE EXPRESS ABN 500 mg /6 mL Tabless Columns	30
<b>611-0050-CXG</b>	EVOLUTE EXPRESS CX 500 mg /6 mL Tabless Columns	30
<b>612-0050-CXG</b>	EVOLUTE EXPRESS WCX 500 mg /6 mL Tabless Columns	30
<b>613-0050-CXG</b>	EVOLUTE EXPRESS AX 500 mg /6 mL Tabless Columns	30
<b>614-0050-CXG</b>	EVOLUTE EXPRESS WAX 500 mg /6 mL Tabless Columns	30

#### Options for processing up to 96 x 1 mL Tabless columns

Part Number	Description	Quantity
<b>Biotage® Extrahera™</b>		
<b>414253SP</b>	Column Rack 96 x 1 mL (tabless)	1
<b>Biotage® Pressure+ 96</b>		
<b>PPM-A96-CH</b>	PRESSURE+ 96 Tabless 1 mL Column Holder	1
<b>Biotage® VacMaster™-96</b>		
<b>121-9620</b>	VacMaster-96 Tabless 1 mL Column Holder	1

#### EUROPE

Main Office: +46 18 565900  
Toll Free: +800 18 565710  
Fax: +46 18 591922  
Order Tel: +46 18 565710  
Order Fax: +46 18 565705  
order@biotage.com  
Support Tel: +46 18 56 59 11  
Support Fax: +46 18 56 57 11  
eu-1-pointsupport@biotage.com

#### NORTH & LATIN AMERICA

Main Office: +1 704 654 4900  
Toll Free: +1 800 446 4752  
Fax: +1 704 654 4917  
Order Tel: +1 704 654 4900  
Order Fax: +1 434 296 8217  
ordermailbox@biotage.com  
Support Tel: +1 800 446 4752  
Outside US: +1 704 654 4900  
us-1-pointsupport@biotage.com

#### JAPAN

Tel: +81 3 5627 3123  
Fax: +81 3 5627 3121  
jp\_order@biotage.com  
jp-1-pointsupport@biotage.com

#### CHINA

Tel: +86 21 2898 6655  
Fax: +86 21 2898 6153  
cn\_order@biotage.com  
cn-1-pointsupport@biotage.com

To locate a distributor,  
please visit our website  
www.biotage.com

Part Number: PPS383

© 2015 Biotage. All rights reserved. No material may be reproduced or published without the written permission of Biotage. Information in this document is subject to change without notice and does not represent any commitment from Biotage. E&OE. A list of all trademarks owned by Biotage AB is available at [www.biotage.com/legal](http://www.biotage.com/legal). Other product and company names mentioned herein may be trademarks or registered trademarks and/or service marks of their respective owners, and are used only for explanation and to the owners' benefit, without intent to infringe.