

The collective power of chromatography

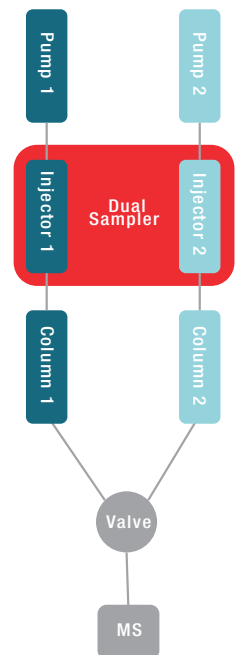


Thermo Scientific Vanquish Duo System for Transcend Duo LX-2

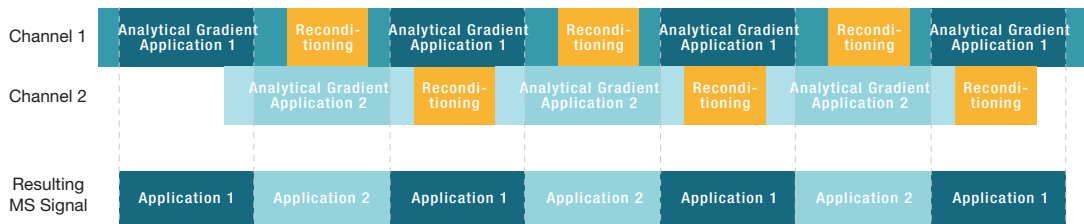
Maximize LC-MS throughput

During gradient elution of LC-MS analysis the elution window of the compounds of interest is often only a fraction of the total run time limiting the final sample throughput. The Thermo Scientific™ Vanquish™ Duo UHPLC System for Thermo Scientific™ Transcend™ Duo LX-2 can double LC-MS throughput with a multi-channel LC approach that eliminates wasted time from the application.

- Double throughput without compromising data quality
- Small footprint for optimal bench space utilization
- Improves flexibility by running two different methods simultaneously
- Accelerates Return on Investment with greater MS utilization

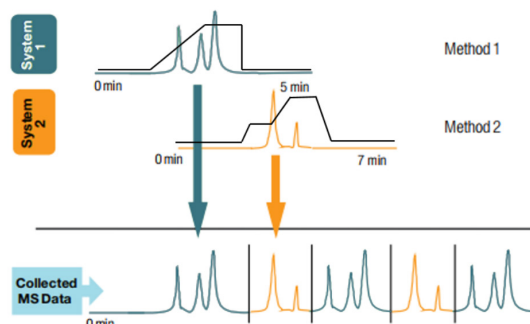


Multichannel LC-MS Method

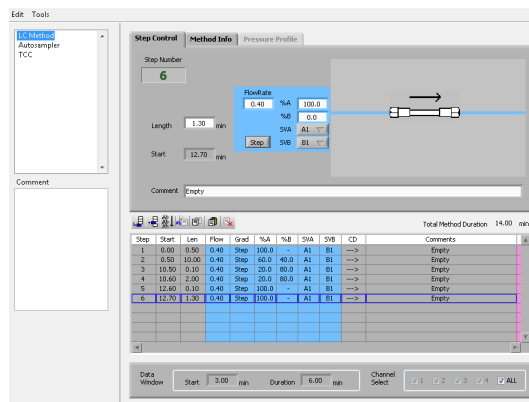


Thermo Scientific Vanquish Duo UHPLC System for Transcend Duo LX-2

The Transcend Duo LX-2 workflow consists of two independent LC channels which can independently operate to run the separation. This combination along with the smart scheduling capability of Thermo Scientific™ Aria™ MX software results in doubled throughput without any sacrifice in data quality, sensitivity or additional bench space.



Aria MX software manages and controls all aspects of the Transcend system. It is powerful enough to schedule and manage multiple methods on multiple channels simultaneously. At the same time, it features an intuitive graphical method editing, allowing anyone to quickly develop methods and run batches of samples. Aria software is built into Thermo Scientific mass spectrometer software such as Thermo Scientific™ TraceFinder™, and Thermo Scientific™ Xcalibur™ software. It can also communicate and run with Analyst® software.



| | Vanquish Flex Duo for Transcend Duo LX-2 | Vanquish Horizon Duo for Transcend Duo LX-2 | Transcend LX-2 |
|---------------------|--|---|----------------|
| Max. Pressure | 1000 bar | 1500 bar | 1000 bar |
| Autosampler Arms | 2 | 2 | 1 |
| Injection precision | <0.25% | <0.25% | RSD < 0.5 % |
| Footprint (w x D) | 54 x 62 cm | 54 x 62 cm | 142 x 82 cm |
| Sample Capacity | 4 Plates | 4 Plates | 6 Plates |

Find out more at thermofisher.com/vanquishduo

©2019 Thermo Fisher Scientific Inc. Analyst Software is trademarked and owned by AB SCIEX. All other rights reserved. All trademarks are the property of Thermo Fisher Scientific and its subsidiaries. This information is presented as an example of the capabilities of Thermo Fisher Scientific products. It is not intended to encourage use of these products in any manners that might infringe the intellectual property rights of others. Specifications, terms and pricing are subject to change. Not all products are available in all countries. Please consult your local sales representatives for details. **PS73010-EN 0519S**